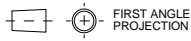


# A0 INSTALLATION DRAWING

IF THIS DOCUMENT IS PRINTED IN HARD COPY, IT IS FOR INFORMATION USE ONLY AND THEREFORE IS NOT SUBJECT TO UPDATING CONTROLS. ALWAYS REFER TO SOLIDWORKS VIEWER FOR LATEST ISSUE



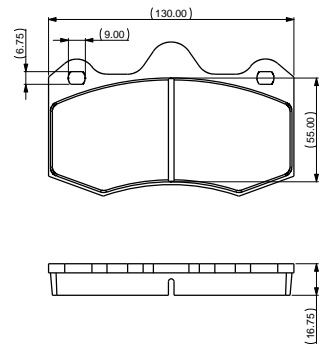
THIS DRAWING IS CONFIDENTIAL AND IS SUPPLIED ON THE EXPRESS CONDITION THAT IT SHALL NOT BE LOANED OR COPIED OR DISCLOSED TO ANY OTHER PERSON OR USED FOR ANY OTHER PURPOSE WITHOUT THE WRITTEN CONSENT OF AP RACING LTD.

**AP RACING**  
 AP Racing  
 Wheeler Road  
 Coventry  
 CV3 4LB  
 Tel: +44 (0)24 7663 9595  
 Fax: +44 (0)24 7663 9599  
 e-mail: sales@ap-racing.co.uk  
 © AP Racing Ltd. 2016  
 Web site: HTTP://www.ap-racing.com

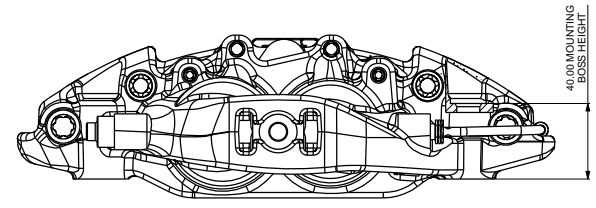
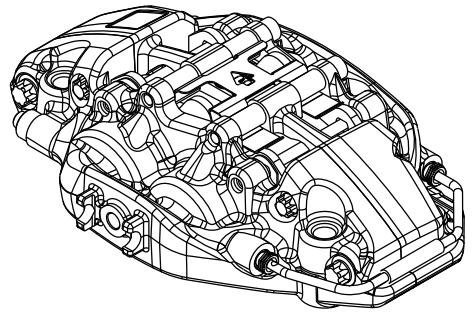
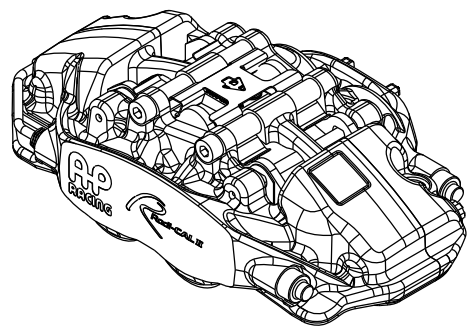
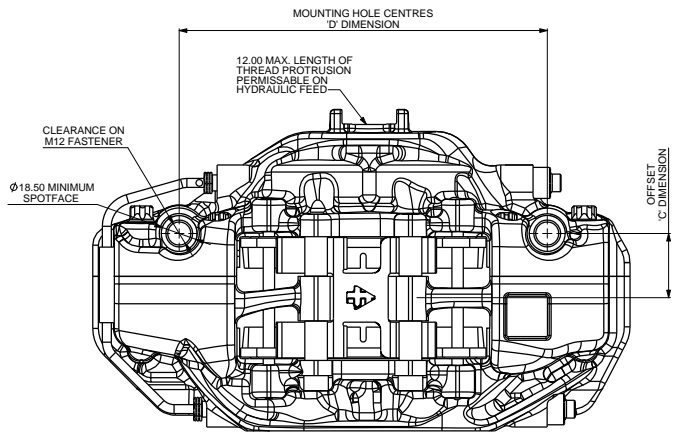
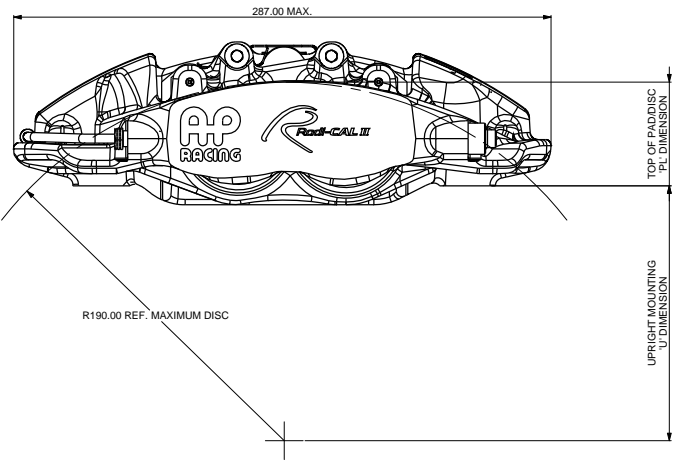
CALIPER SPECIFICATION	
BORE SIZE	DE (28.60 X 31.80) (1.125" X 1.25")
PISTON AREA	14.40cm <sup>2</sup>
DISC DIAMETER MAX	380.00
DISC THICKNESS MAX	28.00
DISC THICKNESS MIN (WORN CONDITION)	26.00 (DIFFERENTIAL WEAR NOT TO EXCEED 0.50mm SIDE TO SIDE)
WORKING PRESSURES	SEE DATA SHEET P14.354 (AVAILABLE FROM AP RACING TECHNICAL DEPT)
HYDRAULIC FEED	M10 x 1.0
DRY WEIGHT (LESS PADS)	3.28kg
PAD FAMILY	CP6600
EFFECTIVE RADIUS (ON DIAMETER 380.00 DISC)	162.50
PL DIMENSION	55.00
OFFSET 'C' DIMENSION	34.00
MOUNTING HOLE CENTRES 'D' DIMENSION	195.00
PAD FRICTION MATERIAL MIN THICKNESS	2.50
PAD RETENTION	2 x FRICTION RETAINED PINS
TIGHTENING TORQUES	BLEED SCREW: 17Nm HYDRAULIC FEED: 25Nm RETAINER BOLTS: 19Nm
CORROSION PROTECTION	FLUID RESISTANT PAINT FINISH ALUMINIUM BODY BOOT TYPE DIRT SEALS

CALIPER POSITIONING	
RHT	RIGHT HAND TRAILING (BEHIND AXLE)
LHT	LEFT HAND TRAILING (BEHIND AXLE)
RHL	RIGHT HAND LEADING (IN FRONT OF AXLE)
LHL	LEFT HAND LEADING (IN FRONT OF AXLE)

PART NUMBERING CONVENTION	
PART NUMBER	DESCRIPTION
CP9541-6S0	RHT - SIDE FEED - NO ANTI KNOCK BACK SPRINGS
CP9541-7S0	LHT - SIDE FEED - NO ANTI KNOCK BACK SPRINGS
CP9541-8S0	RHL - SIDE FEED - NO ANTI KNOCK BACK SPRINGS
CP9541-9S0	LHL - SIDE FEED - NO ANTI KNOCK BACK SPRINGS



CP6600 PAD FAMILY  
 PAD AREA (MAX) 64.6cm<sup>2</sup>



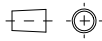
Alterations	
Date & No.	Particulars
1 25/10/16 R4188	FIRST ISSUE
2 06/01/17 R4292	RADIAL PROFILES REFINED (SHEET 2)
3 18/05/17 R4292	RETAINER TORQUE UPDATED WAS 27.1Nm, NOW 19Nm
4 17/07/17 R4292	PART NUMBERING CONVENTION TABLE UPDATED WITH CORRECT PART NOs.
5 29/08/18 R4292_17	DRY WEIGHT 3.28KG ADDED TO CALIPER SPECIFICATION TABLE

SCALE 1:1 SHEET 1 OF 2  
 DRAWN ALTHORPE  
 APPROVED  
 DERIVED FROM  
 TITLE  
 CALIPER INSTALLATION DRAWING  
 Ø380 x 28 MAX DISC (DE BORES)  
 DRG NO. cp9541-6cd

**FOR INSTALLED PROFILES SEE SHEET 2**

# A0 INSTALLATION DRAWING

IF THIS DOCUMENT IS PRINTED IN HARDCOPY, IT IS FOR INFORMATION USE ONLY AND THEREFORE IS NOT SUBJECT TO UPDATING CONTROLS. ALWAYS REFER TO SOLIDWORKS VIEWER FOR LATEST ISSUE

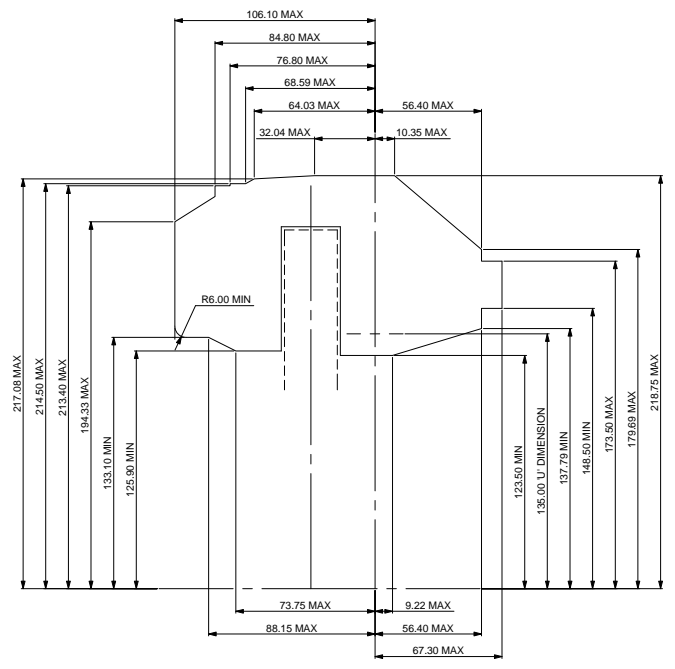


FIRST ANGLE PROJECTION

THIS DRAWING IS CONFIDENTIAL AND IS SUPPLIED ON THE EXPRESS CONDITION THAT IT SHALL NOT BE LOANED OR COPIED OR DISCLOSED TO ANY OTHER PERSON OR USED FOR ANY OTHER PURPOSE WITHOUT THE WRITTEN CONSENT OF AP RACING LTD.



AP Racing  
 Wheeler Road  
 Coventry  
 CV3 4LB  
 Tel: +44 (0)24 7663 9595  
 Fax: +44 (0)24 7663 9559  
 e-mail: sales@apracings.co.uk  
 © AP Racing Ltd. 2016  
 Web site: HTTP://www.apracings.com



CALIPER INSTALLED PROFILE  
 ON Ø380.0 x 28.00 DISC

Alterations		Zone	Index
Date & No.	Particulars		
-	SEE SHEET 1 FOR ISSUE INFORMATION.	-	-

SCALE 1:1	SHEET 2 OF 2
DRAWN	A.THORPE
APPROVED	
DERIVED FROM	
TITLE	
CALIPER INSTALLATION DRAWING	
Ø380 x 28 MAX DISC (DE BORES)	
DRG NO.	cp9541-6cd