

**B1**  
**INSTALLATION**  
**DRAWING**

IF THIS DOCUMENT IS PRINTED IN HARD COPY,  
IT IS FOR INFORMATION USE ONLY AND THEREFORE  
IS NOT SUBJECT TO UPDATING CONTROLS. ALWAYS  
REFER TO SOLIDWORKS VIEWER FOR LATEST ISSUE



THIS DRAWING IS CONFIDENTIAL AND IS SUPPLIED ON THE EXPRESS CONDITION THAT  
IT SHALL NOT BE LOANED OR COPIED OR DISCLOSED TO ANY OTHER PERSON OR USED  
FOR ANY OTHER PURPOSE WITHOUT THE WRITTEN CONSENT OF AP RACING LTD.



AP Racing  
Wheler Road  
Coventry  
CV3 4LB

Tel: +44 024 7663 9595  
Fax: +44 024 7663 9559

e-mail: sales@apracings.co.uk  
Web site: HTTP://www.apracings.com

© AP Racing Ltd. 2005

**GENERAL DESCRIPTION**  
4 PISTON DIFFERENTIAL BORE CALIPER TO SUIT UP TO  
Ø355 x 32 CARBON DISC & UP TO Ø355 x32.0 IRON DISC

**APPLICATION**  
GT REAR

**TECHNICAL INFORMATION**  
TOTAL PISTON AREA: 33.2cm<sup>2</sup>  
PISTON MATERIAL: SEE CHART  
BODY MATERIAL: ALUMINIUM ALLOY  
ASSEMBLY WEIGHT: SEE CHART

**INSTALLATION INFORMATION**  
DISC & CALIPER MOUNTING TOLERANCES TO BE SUCH THAT  
THE DISC IS CENTRAL TO THE CALIPER TO WITHIN ±0.5mm.  
DISC DIAMETRAL CLEARANCE SHOULD BE 2.5mm NOMINAL  
FROM DISC O/D TO PATHWAY.

**KEY TO DIMENSIONS**  
PL DIMN : TOP OF PAD MATERIAL TO MOUNTING BOSS FACE,  
WITH PAD SITTING DOWN ON LEDGE.  
'U' DIMN : WHEEL CENTRE LINE TO CALIPER MOUNTING BOSS  
FACE = (DISC Ø/2) - PL DIMN

**CALIPER PART NUMBERS :**

CP6271-2S7M [P or C] [N] - RIGHT HAND TRAILING (BEHIND AXLE)  
CP6271-3S7M [P or C] [N] - LEFT HAND TRAILING (BEHIND AXLE)  
CP6271-4S7M [P or C] [N] - RIGHT HAND LEADING (IN FRONT OF AXLE)  
CP6271-5S7M [P or C] [N] - LEFT HAND LEADING (IN FRONT OF AXLE)

ASSEMBLY PART NO'S INCLUDING SUFFIX 'P' DENOTES  
CALIPER WITH 'CLIP IN TYPE' PISTONS FOR ADDITION OF  
CLIP IN INSULATING CAPS, BUT NO CAPS FITTED.

ASSEMBLY PART NO'S INCLUDING SUFFIX 'C' DENOTES  
CALIPER WITH 1.5MM THICK CERAMIC PISTON CAPS FITTED.

ASSEMBLY PART NO'S ENDING WITH SUFFIX 'N' DENOTES  
CALIPER WILL BE PLATED WITH A NICKLE COATING.

eg. CP6270-2S7MPN

FOR DUCTING INFORMATION SEE SHEET 2

FOR CALIPER SPARES INFORMATION SEE SHEET 3

Rev No	Alterations			Zone	Initials
	Date & No.	Particulars	#		
1	31/05/2007 B4619	FIRST ISSUE	#		
2	13/09/2007 B4619	PICTORIALLY UPDATED, RADIAL CHAMFER ADDED.	#		CDA

SCALE 2:1 SHEET 1 OF 3

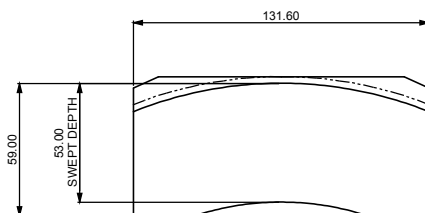
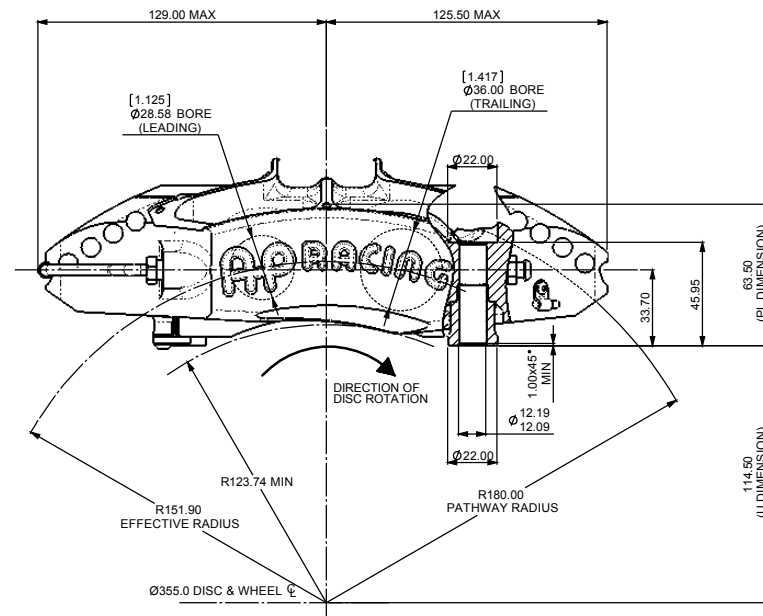
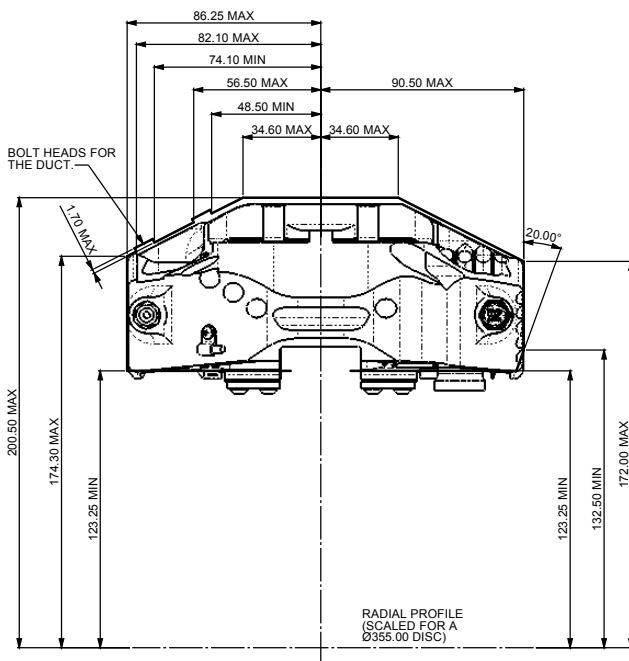
DRAWN Chris Arrowsmith

APPROVED

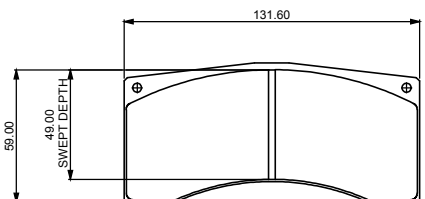
DERIVED FROM CP6071-2/3/4/5

TITLE  
GT REAR CALIPER  
MOUNTINGS 130 x 62

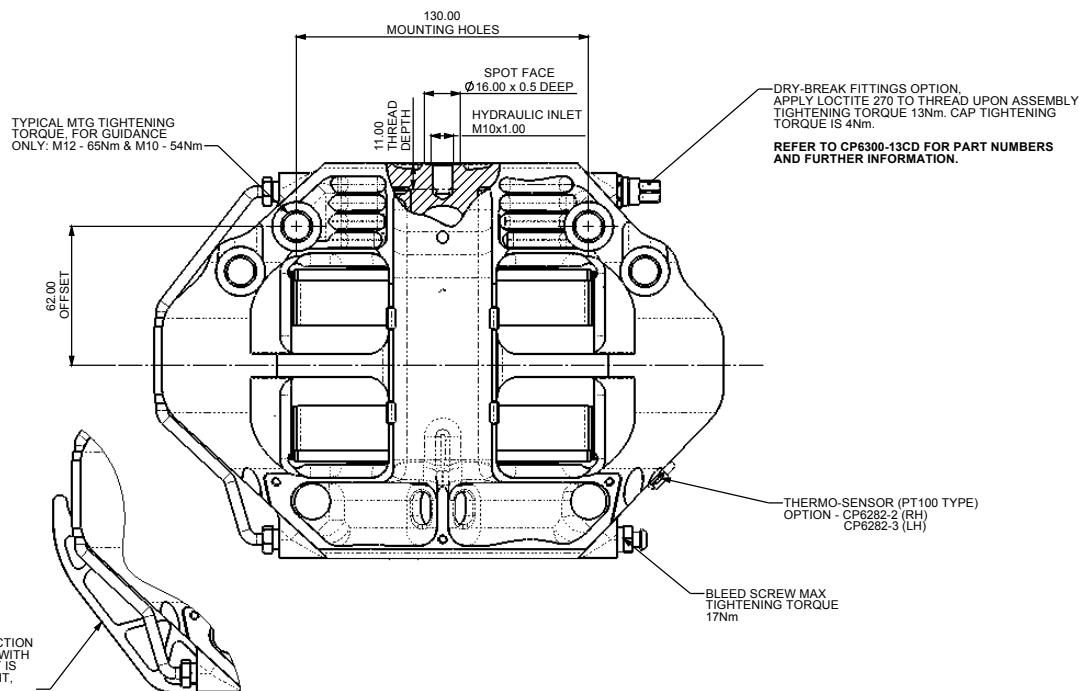
DRG NO. CP6271-1CD



CP6070-108H## CARBON/CARBON PAD  
AREA: 69.1cm<sup>2</sup>  
THICKNESS: 25mm



CP6070D49 FAMILY IRON PAD  
AREA: 61.6cm<sup>2</sup>  
THICKNESS: 25mm



THIS PIPE PROTECTION  
IS NOT SUPPLIED WITH  
THE CALIPER, BUT IS  
AVAILABLE AS A KIT,  
CP6096-10

B1

INSTALLATION  
DRAWING

IF THIS DOCUMENT IS PRINTED IN HARDCOPY,  
IT IS FOR INFORMATION USE ONLY AND THEREFORE  
IS NOT SUBJECT TO UPDATING CONTROLS. ALWAYS  
REFER TO SOLIDWORKS VIEWER FOR LATEST ISSUE

FIRST ANGLE  
PROJECTION

THIS DRAWING IS CONFIDENTIAL AND IS SUPPLIED ON THE EXPRESS CONDITION THAT  
IT SHALL NOT BE LOANED OR COPIED OR DISCLOSED TO ANY OTHER PERSON OR USED  
FOR ANY OTHER PURPOSE WITHOUT THE WRITTEN CONSENT OF AP RACING LTD.

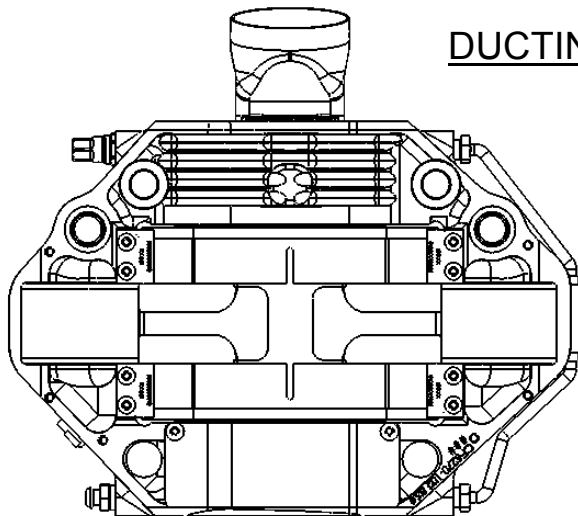


AP Racing  
Wheler Road  
Coventry  
CV3 4LB

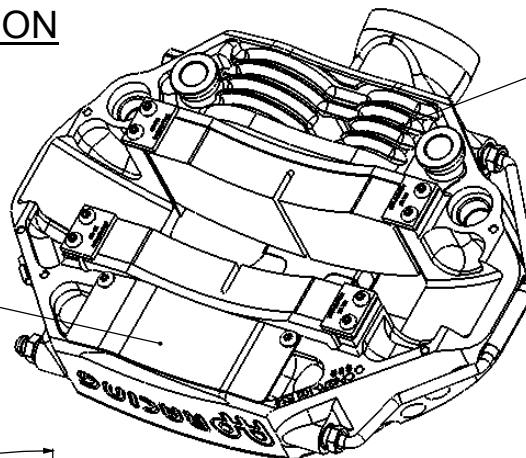
Tel: +44 024 7663 9595  
Fax: +44 024 7663 9559  
e-mail: sales@apracings.co.uk  
Web site: HTTP://www.apracing.com

© AP Racing Ltd. 2005

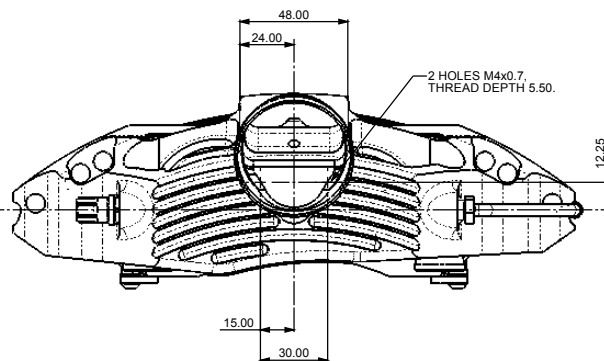
## DUCTING INFORMATION



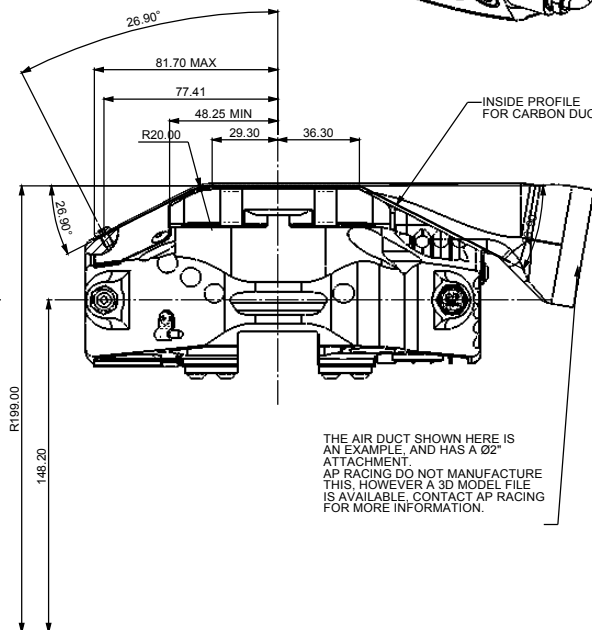
UNDERSIDE AIR DUCT,  
DESIGNED TO KEEP THE  
COOLER AIR CLOSE TO  
THE CALIPER.



MOUNTING SIDE COOLING FIN,  
DESIGNED TO RADIANT THE HEAT.

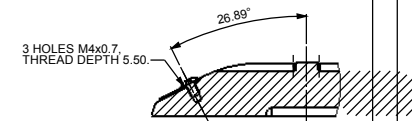


2 HOLES M4x0.7,  
THREAD DEPTH 5.50.

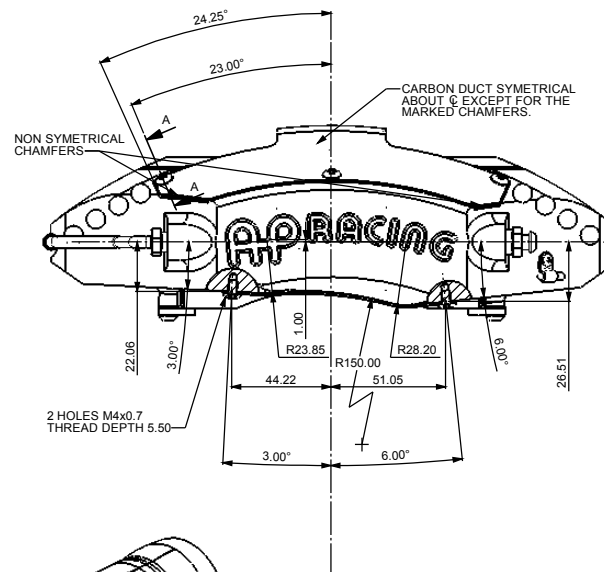


INSIDE PROFILE  
FOR CARBON DUCT.

THE AIR DUCT SHOWN HERE IS  
AN EXAMPLE, AND HAS A Ø2°  
ATTACHMENT.  
AP RACING DO NOT MANUFACTURE  
THIS, HOWEVER A 3D MODEL FILE  
IS AVAILABLE, CONTACT AP RACING  
FOR MORE INFORMATION.



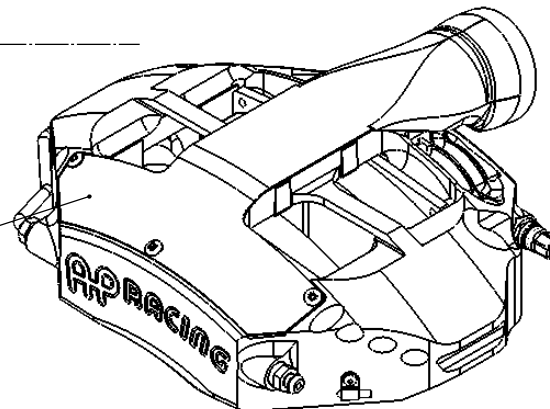
SECTION A-A



NON SYMETRICAL  
CHAMFERS

CARBON DUCT SYMETRICAL  
ABOUT C EXCEPT FOR THE  
MARKED CHAMFERS.

COVER SIDE AIR DUCT,  
DESIGNED TO GET THE  
COOLER AIR OVER TO  
THE HARD TO REACH  
AREAS.



SCALE 2:1 SHEET 1 OF 3

DRAWN Chris Arrowmirth

APPROVED

DERIVED FROM CP6071-2/3/4/5

TITLE  
GT REAR CALIPER  
MOUNTINGS 130 x 62

DRG NO. CP6271-1CD

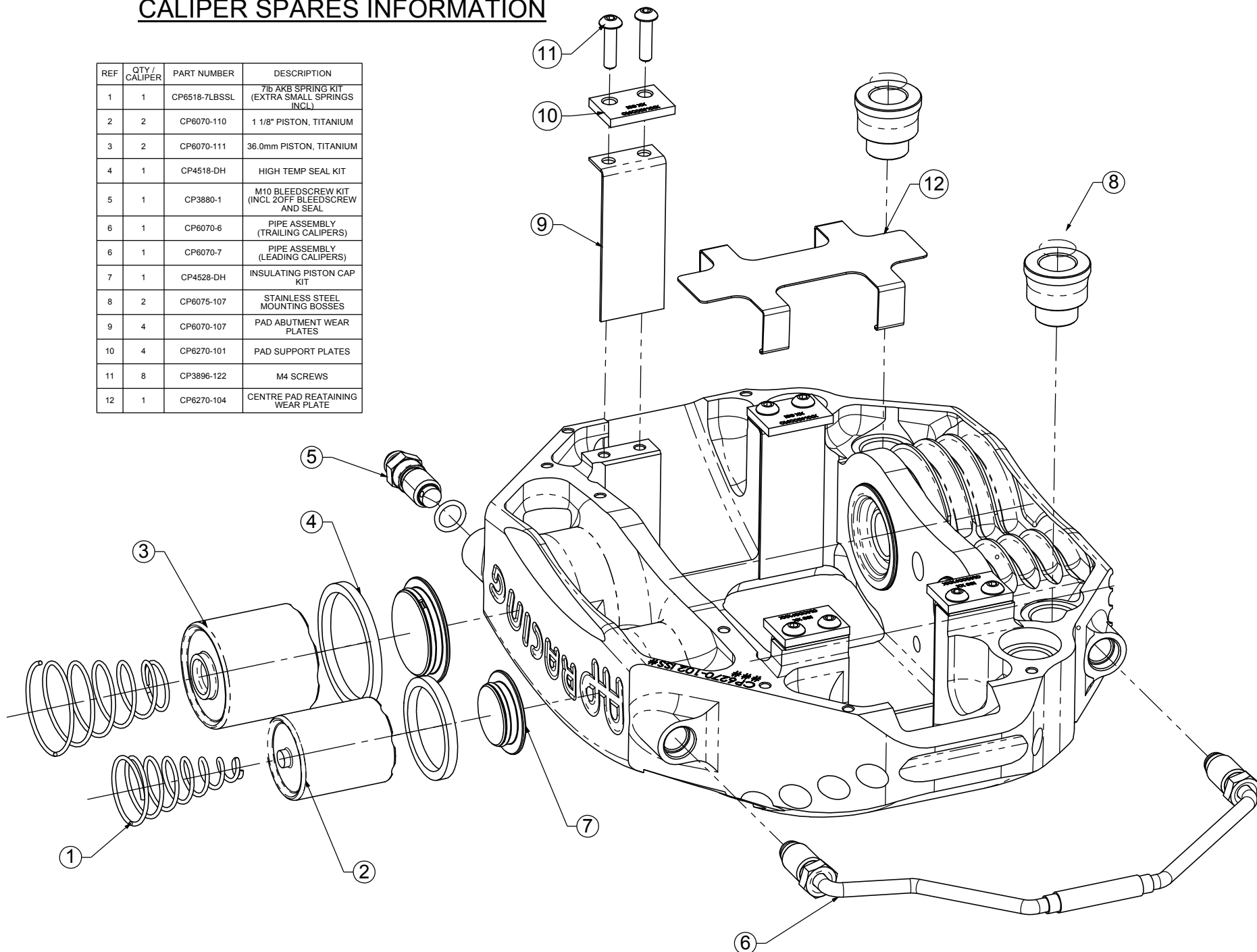
B1

INSTALLATION  
DRAWINGIF THIS DOCUMENT IS PRINTED IN HARD COPY,  
IT IS FOR INFORMATION USE ONLY AND THEREFORE  
IS NOT SUBJECT TO UPDATING CONTROLS. ALWAYS  
REFER TO SOLIDWORKS VIEWER FOR LATEST ISSUEFIRST ANGLE  
PROJECTIONTHIS DRAWING IS CONFIDENTIAL AND IS SUPPLIED ON THE EXPRESS CONDITION THAT  
IT SHALL NOT BE LOANED OR COPIED OR DISCLOSED TO ANY OTHER PERSON OR USED  
FOR ANY OTHER PURPOSE WITHOUT THE WRITTEN CONSENT OF AP RACING LTD.AP Racing  
Wheler Road  
Coventry  
CV3 4LBTel: +44 (0)24 7663 9595  
Fax: +44 (0)24 7663 9559  
e-mail: sales@apracings.co.uk  
Web site: HTTP://www.apracings.com

© AP Racing Ltd. 2005

## CALIPER SPARES INFORMATION

REF	QTY / CALIPER	PART NUMBER	DESCRIPTION
1	1	CP6518-7LBSSL	7lb AK8 SPRING KIT (EXTRA SMALL SPRINGS INCL.)
2	2	CP6070-110	1 1/8" PISTON, TITANIUM
3	2	CP6070-111	36.0mm PISTON, TITANIUM
4	1	CP4518-DH	HIGH TEMP SEAL KIT
5	1	CP3880-1	M10 BLEEDSCREW KIT (INCL 2OFF BLEEDSCREW AND SEAL)
6	1	CP6070-6	PIPE ASSEMBLY (TRAILING CALIPERS)
6	1	CP6070-7	PIPE ASSEMBLY (LEADING CALIPERS)
7	1	CP4528-DH	INSULATING PISTON CAP KIT
8	2	CP6075-107	STAINLESS STEEL MOUNTING BOSSES
9	4	CP6070-107	PAD ABUTMENT WEAR PLATES
10	4	CP6270-101	PAD SUPPORT PLATES
11	8	CP3896-122	M4 SCREWS
12	1	CP6270-104	CENTRE PAD REATAINING WEAR PLATE



SCALE 2:1 SHEET 1 OF 3

DRAWN Chris Arrowsmith

APPROVED

DERIVED FROM CP6071-2/3/4/5

TITLE  
GT REAR CALIPER  
MOUNTINGS 130 x 62

DRG NO. CP6271-1CD