

B1
INSTALLATION
DRAWING

IF THIS DOCUMENT IS PRINTED IN HARD COPY,
IT IS FOR INFORMATION USE ONLY AND THEREFORE
IS NOT SUBJECT TO UPDATING CONTROLS. ALWAYS
REFER TO SOLIDWORKS VIEWER FOR LATEST ISSUE



THIS DRAWING IS CONFIDENTIAL AND IS SUPPLIED ON THE EXPRESS CONDITION THAT
IT SHALL NOT BE LOANED OR COPIED OR DISCLOSED TO ANY OTHER PERSON OR USED
FOR ANY OTHER PURPOSE WITHOUT THE WRITTEN CONSENT OF AP RACING LTD.



AP Racing
Wheler Road
Coventry
CV3 4LB

Tel: +44 024 7663 9595
Fax: +44 024 7663 9559
e-mail: sales@apracings.co.uk
Web site: HTTP://www.apracings.com

© AP Racing Ltd. 2005

GENERAL DESCRIPTION
4 PISTON DIFFERENTIAL BORE CALIPER TO SUIT UP TO
Ø355 x 32 CARBON DISC & UP TO Ø355 x32.0 IRON DISC

APPLICATION
GT REAR

TECHNICAL INFORMATION
TOTAL PISTON AREA: 33.2cm²
PISTON MATERIAL: SEE CHART
BODY MATERIAL: ALUMINIUM ALLOY
ASSEMBLY WEIGHT: SEE CHART

INSTALLATION INFORMATION
DISC & CALIPER MOUNTING TOLERANCES TO BE SUCH THAT
THE DISC IS CENTRAL TO THE CALIPER TO WITHIN ±0.5mm.
DISC DIAMETRAL CLEARANCE SHOULD BE 2.5mm NOMINAL
FROM DISC O/D TO PATHWAY.

KEY TO DIMENSIONS
'PL' DIMN : TOP OF PAD MATERIAL TO MOUNTING BOSS FACE,
WITH PAD SITTING DOWN ON LEDGE.
'U' DIMN : WHEEL CENTRE LINE TO CALIPER MOUNTING BOSS
FACE = (DISC Ø/2) - PL DIMN

CALIPER PART NUMBERS :

CP6270-2S7M [P or C] - RIGHT HAND TRAILING (BEHIND AXLE)
CP6270-3S7M [P or C] - LEFT HAND TRAILING (BEHIND AXLE)
CP6270-4S7M [P or C] - RIGHT HAND LEADING (IN FRONT OF AXLE)
CP6270-5S7M [P or C] - LEFT HAND LEADING (IN FRONT OF AXLE)

ASSEMBLY PART NO'S INCLUDING SUFFIX 'P' DENOTES
CALIPER WITH 'CLIP IN TYPE' PISTONS FOR ADDITION OF
CLIP IN INSULATING CAPS, BUT NO CAPS FITTED.

ASSEMBLY PART NO'S INCLUDING SUFFIX 'C' DENOTES
CALIPER WITH 1.5MM THICK CERAMIC PISTON CAPS FITTED.

eg. CP6270-2S7MP

FOR DUCTING INFORMATION SEE SHEET 2

FOR CALIPER SPARES INFORMATION SEE SHEET 3

Rev No	Alterations			Zone	Initials
	Date & No.	Particulars			
1	31/05/2007 B4619	FIRST ISSUE		#	#
2	31/05/2007 B4619	PICTORIALLY UPDATED. RADIAL CHAMFER ADDED.		#	#

SCALE 2:1 SHEET 1 OF 3

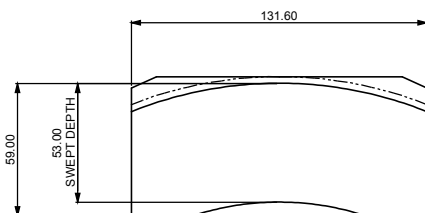
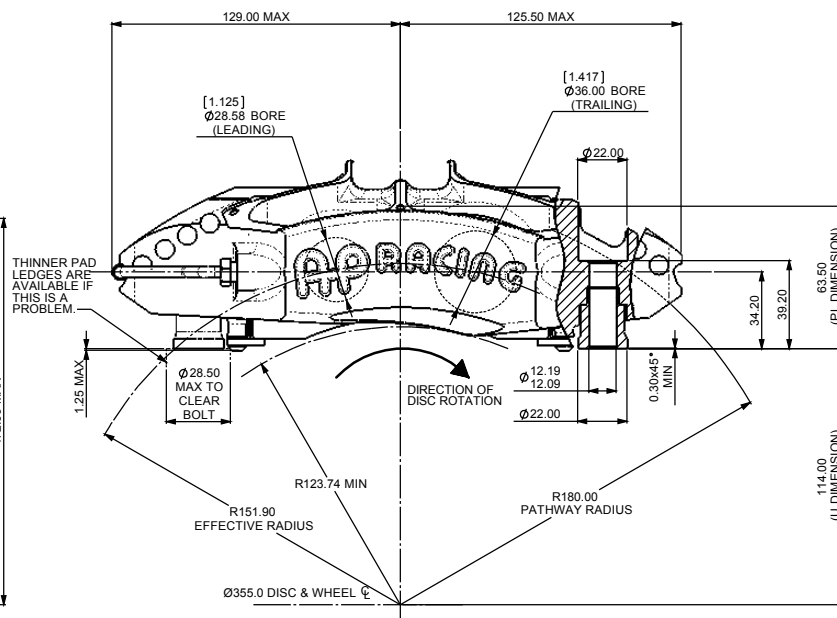
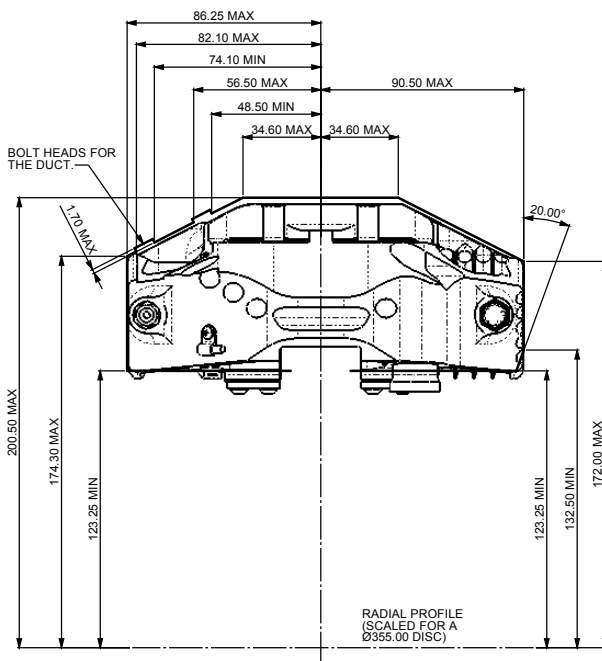
DRAWN Chris Arrowsmith

APPROVED

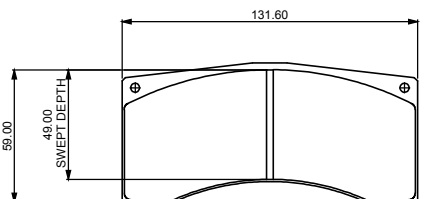
DERIVED FROM CP6070-2/3/4/5

TITLE
GT REAR CALIPER

DRG NO. CP6270-1CD

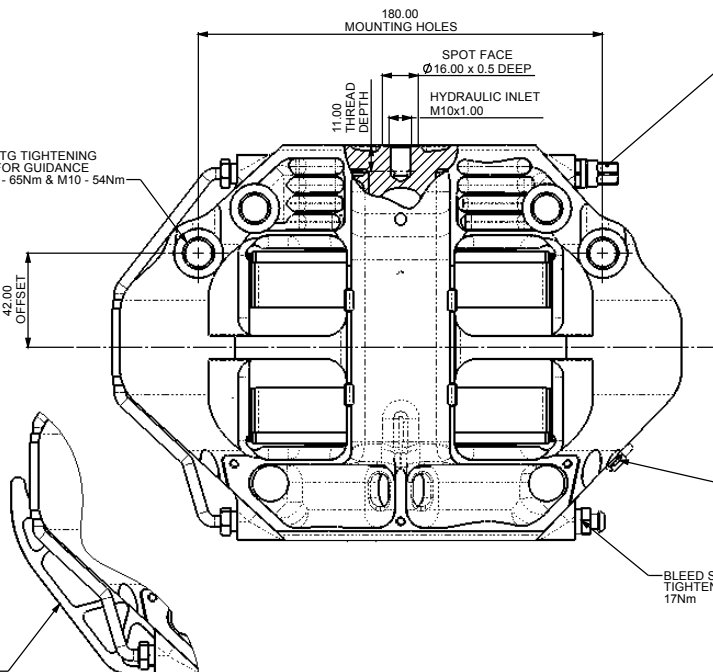


CP6070-108H## CARBON/CARBON PAD
AREA: 69.1cm²
THICKNESS: 25mm



CP6070D49 FAMILY IRON PAD
AREA: 61.6cm²
THICKNESS: 25mm

TYPICAL MTG TIGHTENING
TORQUE, FOR GUIDANCE
ONLY: M12 - 65Nm & M10 - 54Nm



DRY-BREAK FITTINGS OPTION.
APPLY LOCTITE 270 TO THREAD UPON ASSEMBLY.
TIGHTENING TORQUE 13Nm. CAP TIGHTENING
TORQUE IS 4Nm.

REFER TO CP6300-13CD FOR PART NUMBERS
AND FURTHER INFORMATION.

THERMO-SENSOR (PT100 TYPE)
OPTION - CP6282-2 (RH)
CP6282-3 (LH)

BLEED SCREW MAX
TIGHTENING TORQUE
17Nm

THIS PIPE PROTECTION
IS NOT SUPPLIED WITH
THE CALIPER, BUT IS
AVAILABLE AS A KIT,
CP6096-10

B1

INSTALLATION
DRAWING

IF THIS DOCUMENT IS PRINTED IN HARDCOPY,
IT IS FOR INFORMATION USE ONLY AND THEREFORE
IS NOT SUBJECT TO UPDATING CONTROLS. ALWAYS
REFER TO SOLIDWORKS VIEWER FOR LATEST ISSUE



THIS DRAWING IS CONFIDENTIAL AND IS SUPPLIED ON THE EXPRESS CONDITION THAT
IT SHALL NOT BE LOANED OR COPIED OR DISCLOSED TO ANY OTHER PERSON OR USED
FOR ANY OTHER PURPOSE WITHOUT THE WRITTEN CONSENT OF AP RACING LTD.

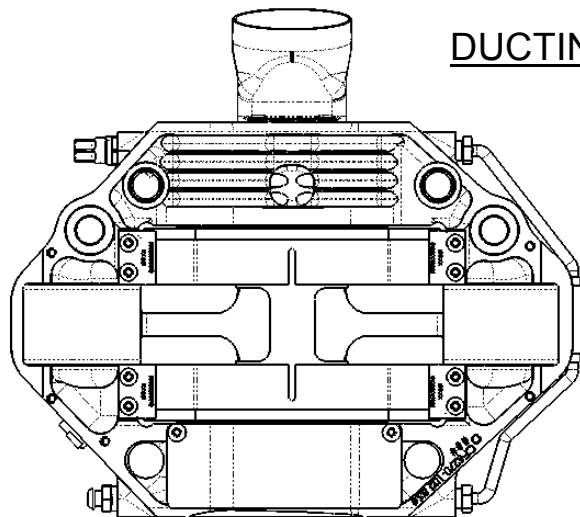


AP Racing
Wheler Road
Coventry
CV3 4LB

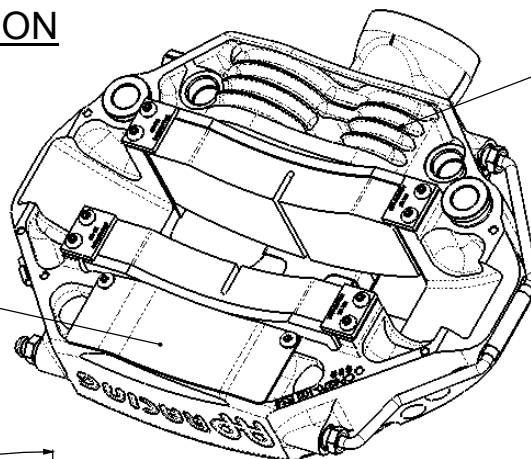
Tel: +44 024 7663 9595
Fax: +44 024 7663 9559
e-mail: sales@apracings.co.uk
Web site: HTTP://www.apracings.com

© AP Racing Ltd. 2005

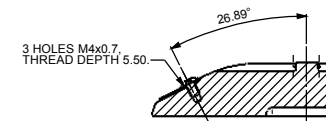
DUCTING INFORMATION



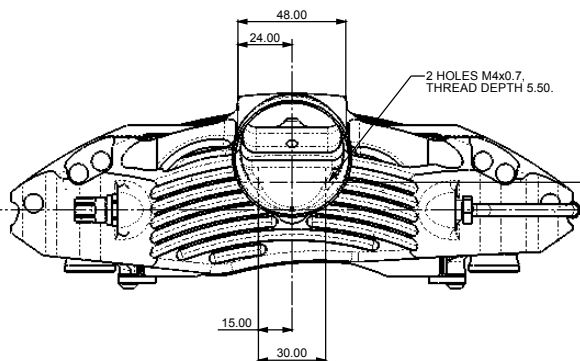
UNDERSIDE AIR DUCT,
DESIGNED TO KEEP THE
COOLER AIR CLOSE TO
THE CALIPER.



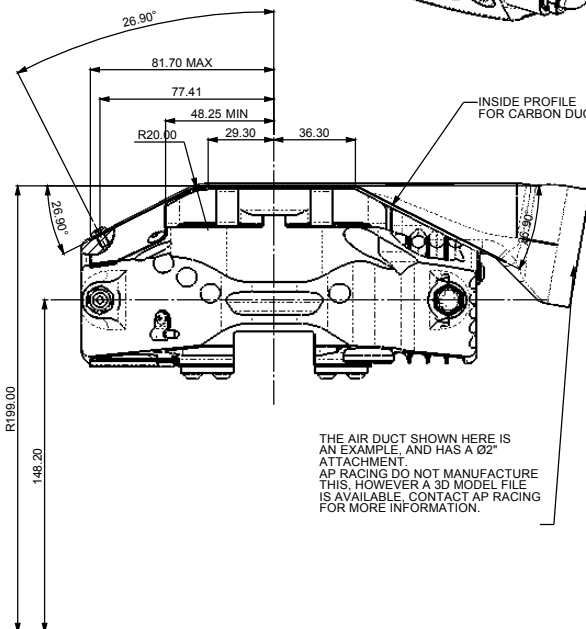
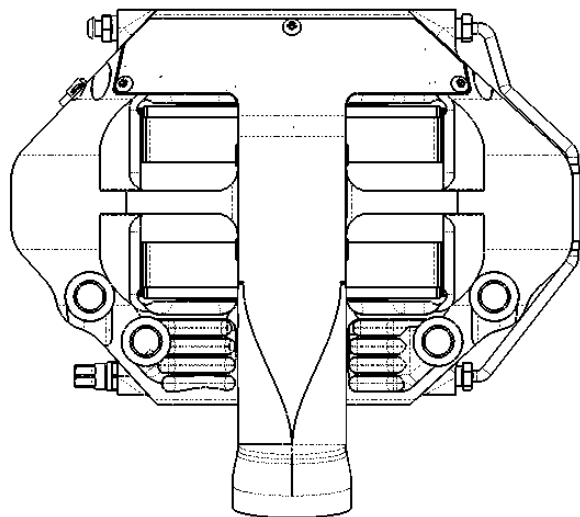
MOUNTING SIDE COOLING FINs,
DESIGNED TO RADIANT THE HEAT.



SECTION A-A

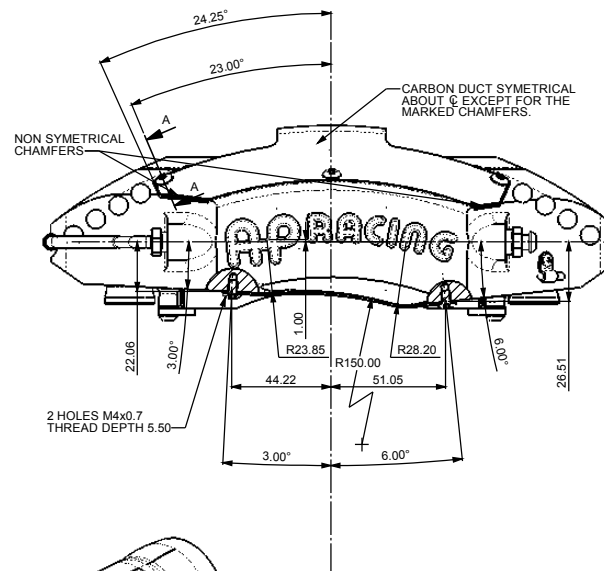


2 HOLES M4x0.7,
THREAD DEPTH 5.50.



INSIDE PROFILE
FOR CARBON DUCT.

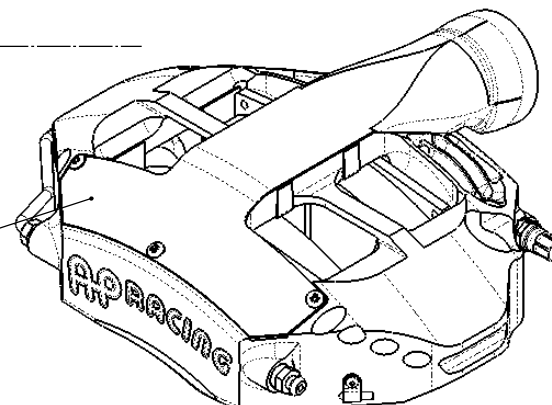
THE AIR DUCT SHOWN HERE IS
AN EXAMPLE, AND HAS A Ø2"
ATTACHMENT.
AP RACING DO NOT MANUFACTURE
THIS, HOWEVER A 3D MODEL FILE
IS AVAILABLE, CONTACT AP RACING
FOR MORE INFORMATION.



CARBON DUCT SYMETRICAL
ABOUT C EXCEPT FOR THE
MARKED CHAMFERS.

NON SYMETRICAL
CHAMFERS

2 HOLES M4x0.7
THREAD DEPTH 5.50



COVER SIDE AIR DUCT,
DESIGNED TO GET THE
COOLER AIR OVER TO
THE HARD TO REACH
AREAS.

Issue No.	Alterations		Zone	Initials
	Date & No.	Particulars		
1		SEE SHEET 1 FOR ISSUE INFORMATION.		

SCALE 2:1		SHEET 1 OF 3	
DRAWN	Chris Arrowsmith		
APPROVED			
DERIVED FROM	CP6070-2/3/4/5		
TITLE			
GT REAR CALIPER			
DRG NO.	CP6270-1CD		

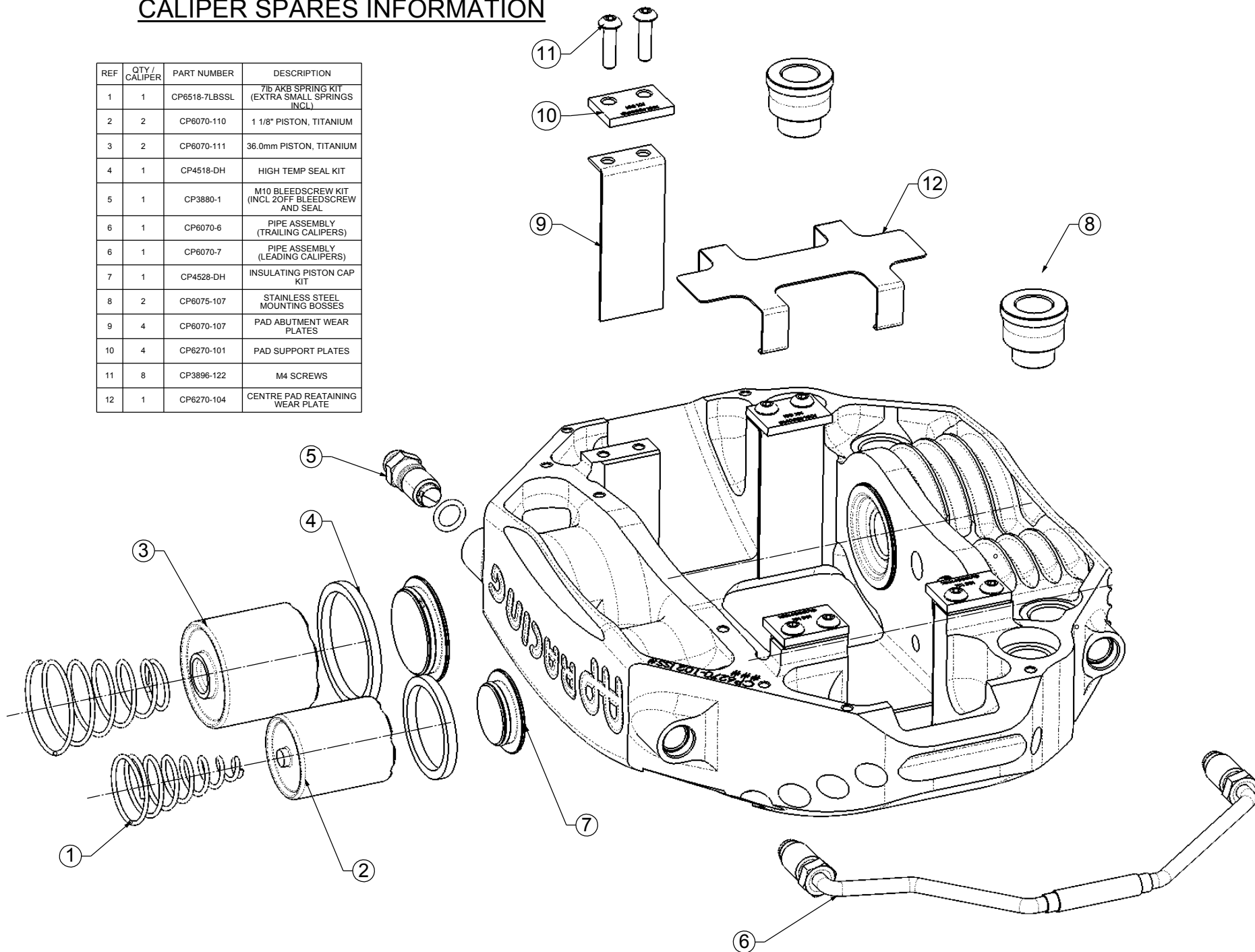
B1

INSTALLATION
DRAWINGIF THIS DOCUMENT IS PRINTED IN HARDCOPY,
IT IS FOR INFORMATION USE ONLY AND THEREFORE
IS NOT SUBJECT TO UPDATING CONTROLS. ALWAYS
REFER TO SOLIDWORKS VIEWER FOR LATEST ISSUEFIRST ANGLE
PROJECTIONTHIS DRAWING IS CONFIDENTIAL AND IS SUPPLIED ON THE EXPRESS CONDITION THAT
IT SHALL NOT BE LOANED OR COPIED OR DISCLOSED TO ANY OTHER PERSON OR USED
FOR ANY OTHER PURPOSE WITHOUT THE WRITTEN CONSENT OF AP RACING LTD.AP Racing
Wheler Road
Coventry
CV3 4LBTel: +44 (0)24 7663 9595
Fax: +44 (0)24 7663 9559
e-mail: sales@apracings.co.uk
Web site: HTTP://www.apracings.com

© AP Racing Ltd. 2005

CALIPER SPARES INFORMATION

REF	QTY / CALIPER	PART NUMBER	DESCRIPTION
1	1	CP6518-7LBSSL	7lb AK8 SPRING KIT (EXTRA SMALL SPRINGS INCL.)
2	2	CP6070-110	1 1/8" PISTON, TITANIUM
3	2	CP6070-111	36.0mm PISTON, TITANIUM
4	1	CP4518-DH	HIGH TEMP SEAL KIT
5	1	CP3880-1	M10 BLEEDSCREW KIT (INCL 2OFF BLEEDSCREW AND SEAL)
6	1	CP6070-6	PIPE ASSEMBLY (TRAILING CALIPERS)
6	1	CP6070-7	PIPE ASSEMBLY (LEADING CALIPERS)
7	1	CP4528-DH	INSULATING PISTON CAP KIT
8	2	CP6075-107	STAINLESS STEEL MOUNTING BOSSES
9	4	CP6070-107	PAD ABUTMENT WEAR PLATES
10	4	CP6270-101	PAD SUPPORT PLATES
11	8	CP3896-122	M4 SCREWS
12	1	CP6270-104	CENTRE PAD REATAINING WEAR PLATE



Issue No	Alterations		Zone	Initials
	Date & No.	Particulars		
-	-	SEE SHEET 1 FOR ISSUE INFORMATION	-	-

SCALE 2:1		SHEET 1 OF 3	
DRAWN		Chris Arrowsmith	
APPROVED			
DERIVED FROM		CP6070-2/3/4/5	
TITLE			
GT REAR CALIPER			
DRG NO.		CP6270-1CD	