

B1
INSTALLATION
DRAWING

IF THIS DOCUMENT IS PRINTED IN HARD COPY,
IT IS FOR INFORMATION USE ONLY AND THEREFORE
IS NOT SUBJECT TO UPDATING CONTROLS. ALWAYS
REFER TO SOLIDWORKS VIEWER FOR LATEST ISSUE

**FIRST ANGLE**
PROJECTION

THIS DRAWING IS CONFIDENTIAL AND IS SUPPLIED ON THE EXPRESS CONDITION THAT
IT SHALL NOT BE LOANED OR COPIED OR DISCLOSED TO ANY OTHER PERSON OR USED
FOR ANY OTHER PURPOSE WITHOUT THE WRITTEN CONSENT OF AP RACING LTD.



AP Racing
Wheler Road
Coventry
CV3 4LB

Tel: +44 024 7663 9595
Fax: +44 024 7663 9559
e-mail: sales@apracings.co.uk
Web site: HTTP://www.apracing.com

© AP Racing Ltd. 2005

GENERAL DESCRIPTION

4 PISTON DIFFERENTIAL BORE CALIPER TO SUIT UP TO
Ø355 x32.0 IRON DISC

APPLICATION

GT REAR

TECHNICAL INFORMATION

TOTAL PISTON AREA: 33.2cm²
PISTON MATERIAL: STAINLESS STEEL
BODY MATERIAL: ALUMINIUM ALLOY
ASSEMBLY WEIGHT: 2260 gm

INSTALLATION INFORMATION

DISC & CALIPER MOUNTING TOLERANCES TO BE SUCH THAT
THE DISC IS CENTRAL TO THE CALIPER TO WITHIN ±0.5mm.
DISC DIAMETRAL CLEARANCE SHOULD BE 2.5mm NOMINAL
FROM DISC O/D TO PATHWAY.

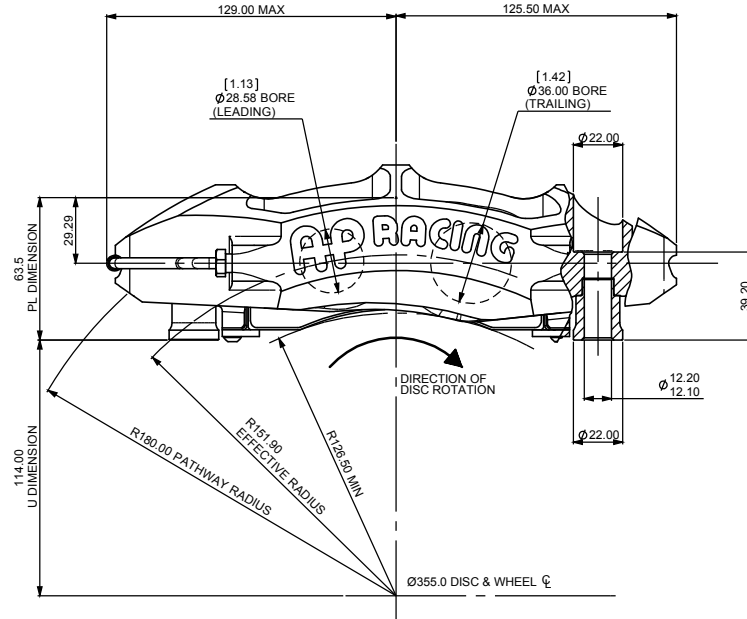
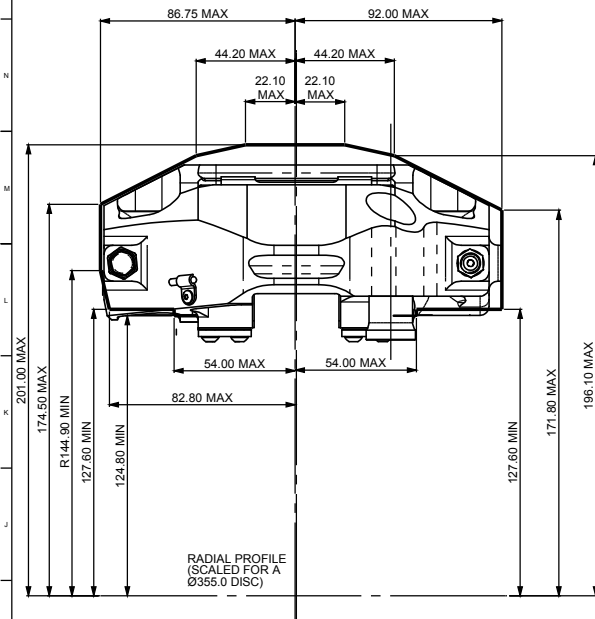
KEY TO DIMENSIONS

'PL' DIMN : TOP OF PAD MATERIAL TO MOUNTING BOSS FACE,
WITH PAD SITTING DOWN ON LEDGE.
'U' DIMN - WHEEL CENTRE LINE TO CALIPER MOUNTING BOSS
FACE = (DISC Ø/2) - PL DIMN

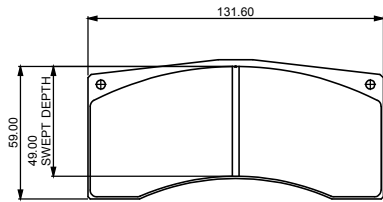
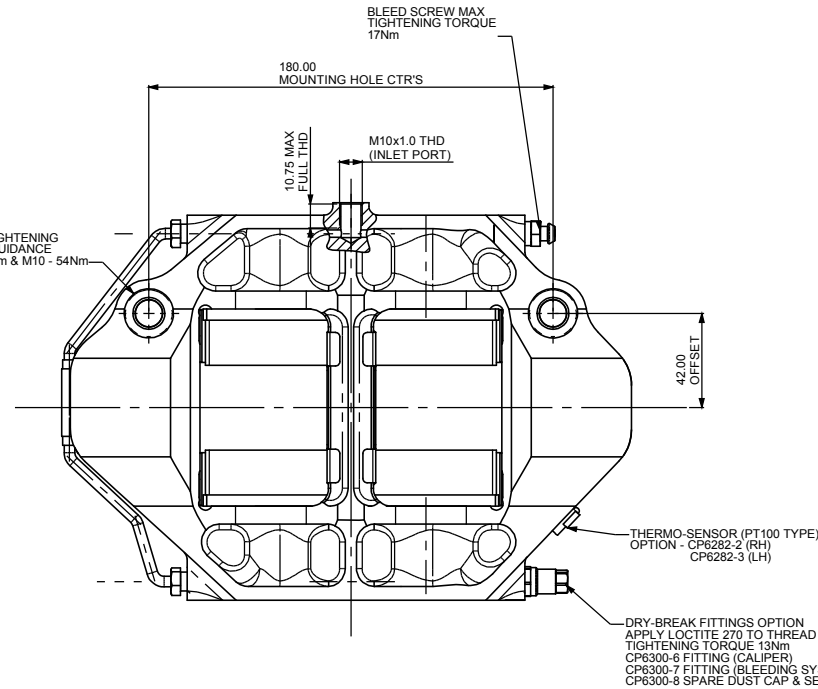
CALIPER PART NUMBERS :

CP6070-2S7LIR - RIGHT HAND TRAILING
CP6070-3S7LIR - LEFT HAND TRAILING
CP6070-4S7LIR - RIGHT HAND LEADING
CP6070-5S7LIR - LEFT HAND LEADING

SEE SHEET 2 FOR SPARE PARTS LIST



TYPICAL MTG TIGHTENING
TORQUE, FOR GUIDANCE
ONLY: M12 - 65Nm & M10 - 54Nm



CP6070D49 FAMILY IRON PAD
AREA: 61.6cm²
THICKNESS: 25mm

Rev	No	Alterations			Zone	Initials
		Date & No.	Particulars			
1		12/12/08 B5400	FIRST ISSUE			DRA

SCALE 1:1		SHEET 1 OF 2	
DRAWN		D.AROWSMITH	
APPROVED			
DERIVED FROM			
TITLE			
GT CALIPER			
INSTALLATION DRAWING			
DRG NO.		CP6070-20 CD	

B1

INSTALLATION DRAWING

IF THIS DOCUMENT IS PRINTED IN HARDCOPY,
IT IS FOR INFORMATION USE ONLY AND THEREFORE
IS NOT SUBJECT TO UPDATING CONTROLS. ALWAYS
REFER TO SOLIDWORKS VIEWER FOR LATEST ISSUE



THIS DRAWING IS CONFIDENTIAL AND IS SUPPLIED ON THE EXPRESS CONDITION THAT
IT SHALL NOT BE LOANED OR COPIED OR DISCLOSED TO ANY OTHER PERSON OR USED
FOR ANY OTHER PURPOSE WITHOUT THE WRITTEN CONSENT OF AP RACING LTD.



AP Racing
Wheler Road
Coventry
CV3 4LB

Tel: +44 (0)24 7663 9595
Fax: +44 (0)24 7663 9559
e-mail: sales@apracings.co.uk
Web site: HTTP://www.apracings.com

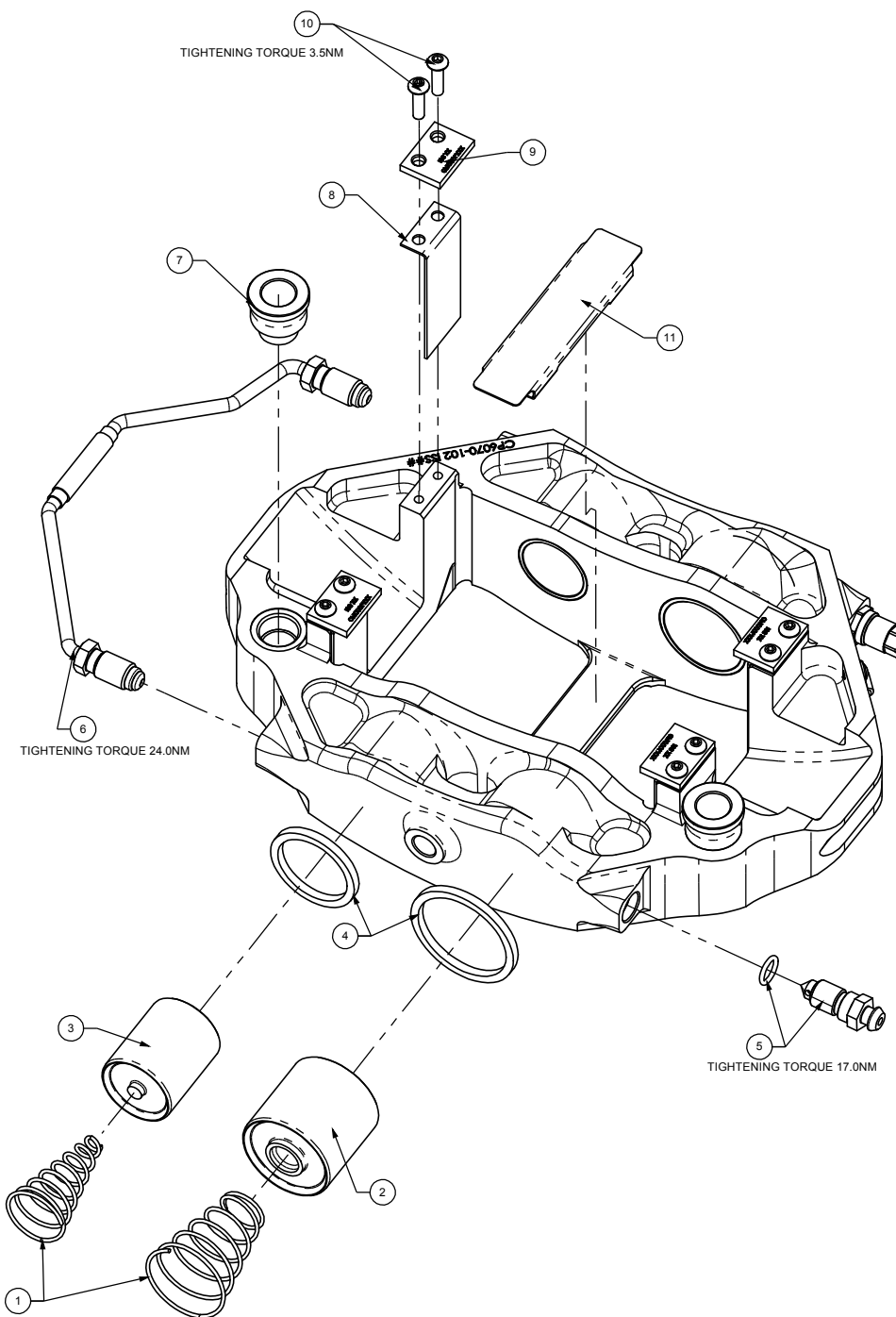
© AP Racing Ltd. 2005

Issue No. Alterations

Date & No. Particulars Zone Initials

SPARE PARTS LIST

REF	QTY / CALIPER	PART No.	DESCRIPTION
1	1	CP6518-7LBSSL	7.00LB AKB SPRING KIT
2	2	CP5015-109	Ø36.0mm PISTON
3	2	CP6070-120	Ø1.12" PISTON
4	1	CP4518-DH	HIGH-TEMP SEAL KIT (4 SEALS)
5	1	CP3880-1	M10 BLEEDSCREW KIT (2 OFF O-RING & SCREW)
6	1	CP6070-6 OR CP6070-7	PIPE ASSEMBLY -6 FOR RHT & LHT -7 FOR RHL & LHL
7	2	CP6075-107	MOUNTING BOSS
8	4	CP6070-107	WEARPLATE
9	4	CP5870-108	PAD SUPPORT
10	8	CP3896-122	M4 SCREW
11	1	CP6070-106	CENTRE WEARPLATE



SCALE 1:1 SHEET 1 OF 2

DRAWN D.ARROWSMITH

APPROVED

DERIVED FROM

TITLE
GT CALIPER
INSTALLATION DRAWING

DRG NO. CP6070-20 CD