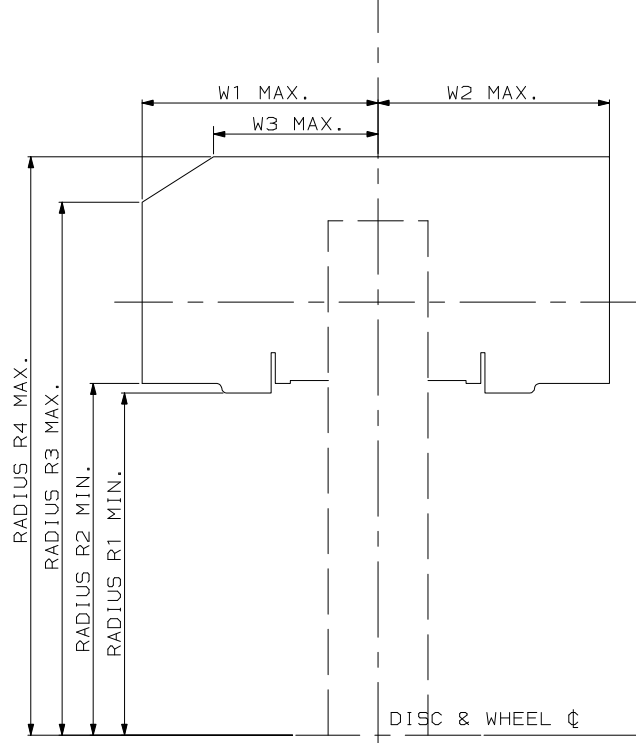
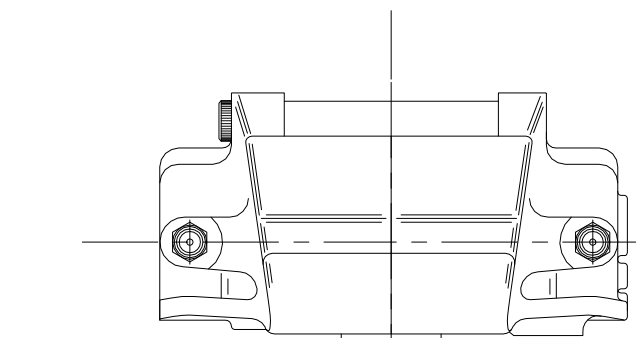
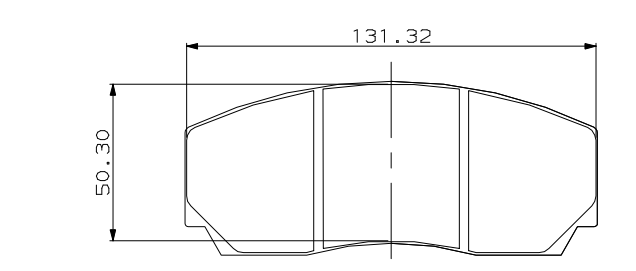


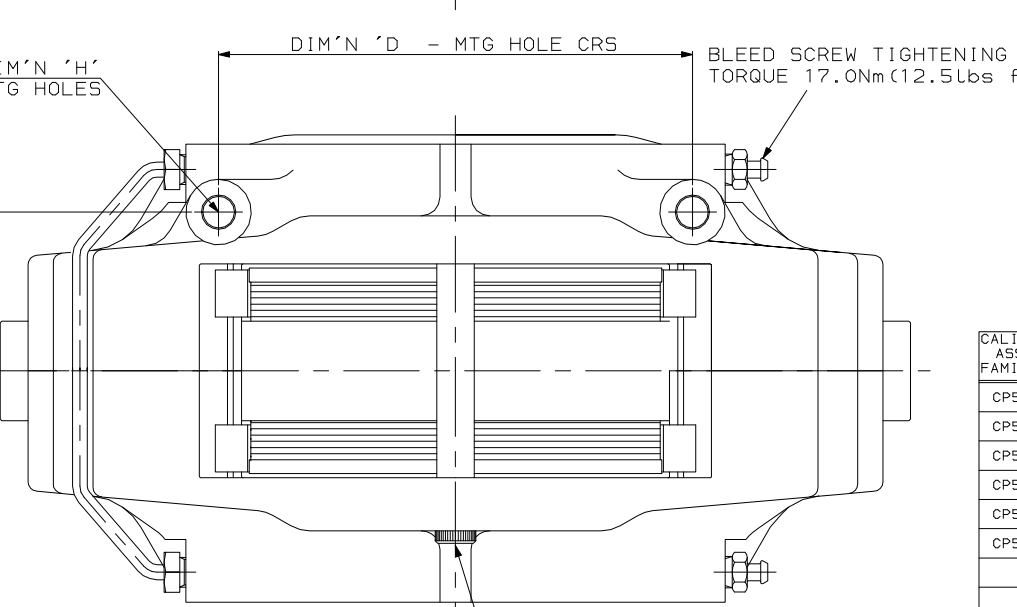
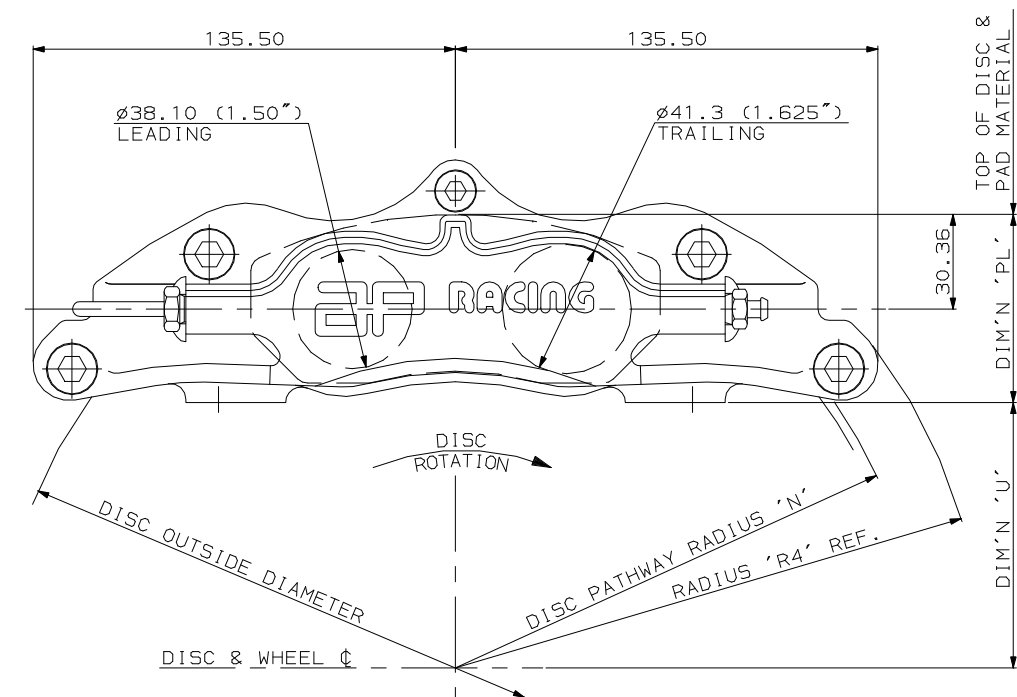
DISC & CALIPER MOUNTING TOLERANCES TO BE SUCH THAT DISC IS CENTRAL TO CALIPER TO WITHIN ±0.5MM.



CALIPER RADIAL PROFILE TO SCALE FOR A Ø330 X 32 DISC



CP3215 PAD FAMILY  
 PAD AREA - 57.37 cm<sup>2</sup>  
 PAD VOLUME - 97.53 cm<sup>3</sup>



PAD RETAINING BOLTS SHOULD BE TIGHTENED TO A TORQUE OF 13.1Nm (9.7 lbs ft).

NOTE  
 VALUE  
 GENERAL DESCRIPTION.  
 THIS IS A LOW COST 4 PISTON DIFFERENTIAL BORE CALIPER DESIGNED TO OPERATE ON A VENTILATED IRON DISC OF UP TO Ø330.2(13"). ALL CALIPERS ARE FITTED WITH STAINLESS STEEL FLUID BRIDGE PIPES, PAD ABUTMENT WEAR PLATES & SEAL IN THE BORE TYPE PISTON SEALS WITH WIPER SEALS.  
 TYPICAL APPLICATIONS- ROADCAR  
 PISTON DIAMETER 2X38.10 (1.50") LEADING 2X41.275 (1.625") TRAILING  
 TOTAL PISTON AREA 49.56 SQ.CM  
 BODY MATERIAL ALUMINIUM ALLOY  
 ALL HYDRAULIC THREADS M10 X 1.0.  
 PISTON MATERIAL ALUMINIUM ALLOY (STANDARD) STAINLESS STEEL OR TITANIUM ALLOY FOR HIGH TEMPERATURE APPLICATIONS.  
 TYPICAL APPLICATIONS-  
 DIMENSION 'PL' TOP OF PAD MATERIAL TO MOUNTING HOLE BOSS FACE WITH PAD SITTING DOWN ON LEDGE.  
 DIMENSION 'C' OFFSET - DISC CENTRE LINE TO CALIPER MOUNTING HOLE C.  
 DIMENSION 'D' MOUNTING HOLE CENTRES.  
 DIMENSION 'H' MOUNTING HOLE DIAMETER.  
 DIMENSION 'U' WHEEL CENTRE TO CALIPER MOUNTING HOLE BOSS FACE.  
 RADIUS 'N' (DISC DIAMETER/2) - 'PL' DIMENSION  
 EFFECTIVE RAD. RADIUS OF DISC PATHWAY RAD FROM WHEEL C TO NOM PISTON C  
 AP RACING TECHNICAL SECTION WILL BE PLEASED TO ADVISE ON THE MOST SUITABLE EQUIPMENT FOR ANY PARTICULAR APPLICATION.  
 1. SELECT ASSEMBLY FROM TABLE.  
 2. SELECT SUFFIX CHARACTERS AS FOLLOWS-  
 1st CHARACTER- 'S' DENOTES POSITION OF INLET ADAPTOR ('S' FOR SIDEFEED).  
 2nd CHARACTER- '0', '4' OR '7' DENOTES THE LOAD OF ANTI KNOCK BACK SPRINGS FITTED  
 '0' NO SPRINGS,  
 '4' 4lb (17.8N) SPRINGS,  
 '7' 7lb (31.0N) SPRINGS FITTED LOAD.  
 3rd CHARACTER- 'M' DENOTES ALTERNATIVE PISTON MATERIAL ('M' FOR TITANIUM).  
 SHOULD PISTONS BE INADVERTANTLY REMOVED, THEY SHOULD BE WIPED CLEAN AND SMEARED WITH AP RACING BRAKE FLUID BEFORE REPLACEMENT.  
 3. THE CORRECT PAD FAMILY NUMBER FOR THIS CALIPER IS CP3215. PADS SHOULD BE ORDERED SEPARATELY. A WIDE VARIETY OF MATERIALS ARE AVAILABLE:- PLEASE CONTACT A.P. RACING FOR ADVICE.  
 EXAMPLE PART NUMBER - CP5200-80354

CALIPER ASSY FAMILY No	STROKE No			DISC DIA Ø	DISC WIDTH DIM 'E'	DIMN 'C'	DIMN 'H'	DIMN 'D'	DIMN 'U'	RAD 'N'	REMARKS & APPLICATIONS
	RHT	LHT	LHL								
CP5200-	810	811	812	813	304.0	32.00	50.93	10.10	152.00	60.36	154.5
CP5200-	814	815	816	817	330.0	14.30	46.86	10.10	152.00	60.36	167.5
CP5200-	828	829	830	831	330.0	28.00	46.86	12.15	152.00	50.81	167.5
CP5200-	806	807	808	809	330.0	28.00	46.86	10.10	152.00	60.36	167.5
CP5200-	818	819	820	821	330.0	28.00	46.86	10.10	152.00	60.36	167.5 HIGH TEMP SEALS
CP5200-	802	803	804	805	330.0	32.00	50.93	10.10	152.00	60.36	167.5

RADIAL PROFILE CHART.

DISC Ø	EFF RAD	RAD 1	RAD 2	RAD 3	RAD 4	W 1	W 2	W 3
CP5200-810/11/12/13	Ø291.0	120.20	91.00	94.00	156.20	171.20	75.70	52.75
	Ø304.0	126.40	97.30	100.30	161.70	176.00	75.70	52.75
CP5200-814/15/16/17	Ø315.0	131.70	102.60	105.60	166.00	180.10	64.80	41.85
	Ø330.0	139.00	109.80	112.80	171.00	185.50	64.80	41.85
CP5200-828/29/30/31	Ø315.0	131.70	102.60	105.60	166.00	180.10	71.70	48.75
	Ø330.0	139.00	109.80	112.80	171.00	185.50	71.70	48.75
CP5200-806/7/8/9	Ø315.0	131.70	102.60	105.60	166.00	180.10	71.70	48.75
	Ø330.0	139.00	109.80	112.80	171.00	185.50	71.70	48.75
CP5200-818/19/20/21	Ø315.0	131.70	102.60	105.60	166.00	180.10	71.70	48.75
	Ø330.0	139.00	109.80	112.80	171.00	185.50	71.70	48.75
CP5200-802/3/4/5	Ø315.0	131.70	102.60	105.60	166.00	180.10	75.70	52.75
	Ø330.0	139.00	109.80	112.80	171.00	185.50	75.70	52.75

CALIPER IDENTIFICATION CHART

RHT	RIGHT HAND TRAILING	BEHIND AXLE
LHT	LEFT HAND TRAILING	BEHIND AXLE
RHL	RIGHT HAND LEADING	IN FRONT OF AXLE
LHL	LEFT HAND LEADING	IN FRONT OF AXLE

UNLESS OTHERWISE STATED:  
 DIMENSIONAL TOLERANCES ±0.25  
 ANGULAR TOLERANCES ±0°30'  
 MAX SURFACE FINISH:  
 BY ANY METHOD ON MACHINED SURFACES WITHOUT MATERIAL REMOVAL  
 DIMENSIONS IN MILLIMETERS DRAWING TO B.S.308. THREADS TO B.S.3643 PT2(MEL110). REMOVE BURRS.  
 TITLE  
 SCALE FULL  
 SHEET NO. TOTAL 1 OF 1

ISSUE NO.	DATE & NO.	ALTERATIONS PARTICULARS	CHK'D
1	06/11/94 B000736	FIRST ISSUE	S.Y
2	16/02/95 B000881	RADIAL PROFILE & CHART REVISED TO SUIT CASTING MODIFICATION. VIEWS ALSO CHANGED PICTORIALY.	S.Y
3	13/04/95	EXTERNAL FEED PIPE SHAPE MODIFIED.	S.Y
4	13/06/95 B001009	RADIAL PROFILE & CHART REVISED TO SUIT 32.0T DISC /R4 & W2 DLT. #304 VERSION ADDED. -8/9/10/11 ADDED.	S.Y
5	23/08/95	RADIAL PROFILE & CHART REVISED TO SUIT CASTING MODIFICATION. VIEWS ALSO CHANGED PICTORIALY. -8/9/10/11 REMOVED. -12/13/14/15 ADDED. -22/23/24/25 ADDED IN PLACE OF -2/3/4/5.	S.Y
6	23/10/97	CALIPER PROFILE & CHART REVISED TO SUIT CASTING MODIFICATION. VIEWS ALSO CHANGED PICTORIALY. -8/9/10/11 ADDED. W2 DIM IN CHART ALTERED TO COMPLY WITH LATEST CALIPER DESIGN.	RB
7	29/10/97	DIM W2 ALTERED TO SUIT SCALE FOR 32MM WIDE DISC	RB
8	04/11/97	RADIAL PROFILE DATA ALTERED TO SUIT LATEST CALIPER DETAILS. RAD PROFILE SKETCH WAS OF Ø291 X 32 WIDE DISC.	RB
9	04/02/98	CP5200-8/11 DIM 'C' WAS 46.86 CHANGED TO 50.93	RB
10	07/07/98	BLEED SCREW TORQUE WAS 5.5Nm, NOW 17.0Nm	RB
11	07/09/98	DIM C ON CP5200-8/11 CORRECTED.	RB
12	09/06/99	RADIAL PROFILE DATA CHECKED AND CORRECTED AS NECESSARY. REF R0323	JH
13	21/06/99	RATIONALISATION OF RADIAL PROFILES. REF. R0323	JH
14	23/5/00	DRAWING CHANGED TO REFLECT NEW CALIPERS	GD
15	20/4/01 RAC09553	CP5200-824/5/6/7 REMOVED.	GD
16	18/03/02 RAC10380	CP5200-828/29/30/31 DIMN 'H' 12.15 WAS 10.10	TTF

MATERIAL  
 MATERIAL SPECIFICATION(S)  
 TREATMENT  
 DRAWN S. YOUNG CHECKED  
 RE-DRAWN CHECKED  
 FINAL APPROVAL  
 TITLE Ø1.625"/1.50" RADIAL MOUNTING OPEN BACK CALIPER INSTALLATION  
 PART NO. CP5200-1  
 GROUP PART NO.