

B1
INSTALLATION
DRAWING

IF THIS DOCUMENT IS PRINTED IN HARD COPY,
IT IS FOR INFORMATION USE ONLY AND THEREFORE
IS NOT SUBJECT TO UPDATING CONTROLS. ALWAYS
REFER TO SOLIDWORKS VIEWER FOR LATEST ISSUE

**FIRST ANGLE**
PROJECTION

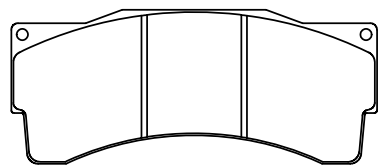
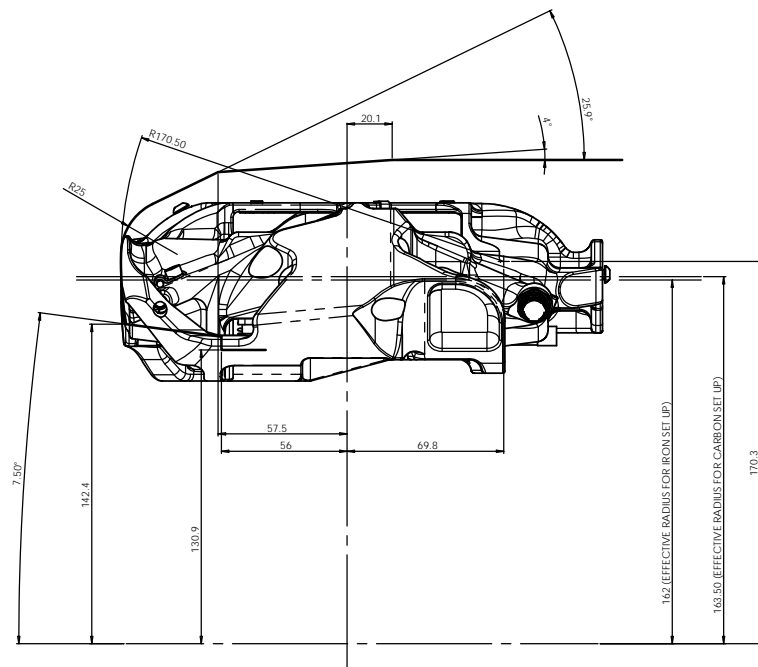
THIS DRAWING IS CONFIDENTIAL AND IS SUPPLIED ON THE EXPRESS CONDITION THAT
IT SHALL NOT BE LOANED OR COPIED OR DISCLOSED TO ANY OTHER PERSON OR USED
FOR ANY OTHER PURPOSE WITHOUT THE WRITTEN CONSENT OF AP RACING LTD.



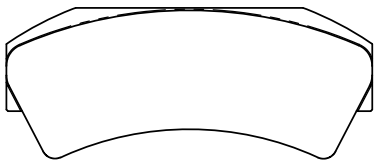
AP Racing
Wheler Road
Coventry
CV3 4LB

Tel: +44 (024) 7663 9595
Fax: +44 (024) 7663 9559
e-mail: sales@apracings.co.uk
Web site: HTTP://www.apracing.com

Issue No.	Alterations			Zone	Initials
	Date & No.	Particulars	#		
1	30/05/12 B6412	FIRST ISSUE			NJS
2	22/08/12 B6412	LVDIT KIT PT # ADDED TO SHEET 2			NJS

**CP6210D54 FAMILY IRON PAD**

PAD AREA
- SLOTTED = 81cm²
- FULL AREA = 83cm²
THICKNESS = 30mm

**CP4970-28H** CARBON/CARBON PAD**

AREA = 81.9cm²
THICKNESS = 27mm

GENERAL DESCRIPTION
6 PISTON DIFFERENTIAL BORE CALIPER TO SUIT IRON OR CARBON SET UP
TO SUIT IRON - Ø378 x 35.6MM DISC WITH 30MM THICK PADS
TO SUIT CARBON - Ø380 x 37.0MM DISC WITH 27MM THICK PADS
STANDARD SPECIFICATION CALIPER TO SUIT UP TO 32MM THICK PADS.

TYPICAL APPLICATION - GT

TECHNICAL INFORMATION & INSTALLATION DATA
TOTAL PISTON AREA (6) - 50.1cm²
PISTON MATERIAL - TITANIUM
BODY MATERIAL - ALUMINIUM ALLOY
ASSEMBLY WEIGHT LESS PADS - 2.32KG
MINIMUM WORN STACK HEIGHT - 49MM

DISC & CALIPER MOUNTING TOLERANCES TO BE SUCH THAT THE DISC IS CENTRAL TO THE CALIPER TO WITHIN ±0.5mm.
CALIPER TO BE MOUNTED WITHIN ±15° FROM VERTICAL.
DISC DIAMETRAL CLEARANCE SHOULD BE 2.5mm NOM. FROM DISC O.D. TO PATHWAY.

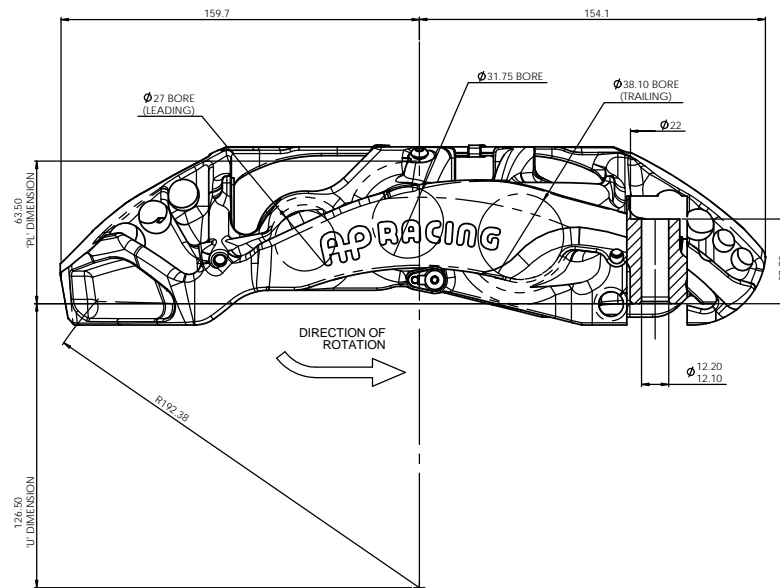
KEY TO DIMENSIONS
'PL': TOP OF PAD MATERIAL TO MOUNTING BOSS FACE WITH PAD SITTING DOWN ON LEDGE.
'U': WHEEL CENTRE LINE TO CALIPER MOUNTING BOSS FACE (DISC Ø/2)-DIMENSION 'PL'.

PISTON CAPS
THE STANDARD PISTONS IN THIS CALIPER ARE NOT DESIGNED TO RUN WITH PISTON CAPS.
IF PISTON CAPS ARE REQUIRED PLEASE CONTACT AP RACING TECHNICAL DEPARTMENT.

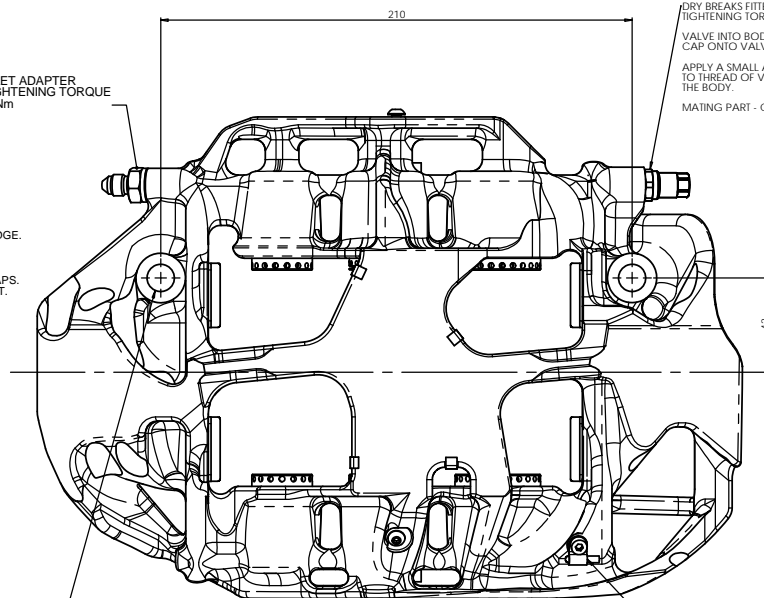
CALIPER PART NUMBERS
CP6165-2S7M - RIGHT HAND TRAILING (BEHIND AXLE) AS DRAWN
CP6165-3S7M - LEFT HAND TRAILING (DEHIND AXLE)

NOTE: CALIPERS CAN BE USED IN A LEADING (IN FRONT OF AXLE) POSITION BY SWAPPING THE INLET ADAPTOR AND BLEED SCREW OVER.

PAD SUPPORTS - SEE SHEET 2 FOR MORE INFO
IF RUNNING IRON SET UP USE - CP6165-109
IF RUNNING CARBON SET UP USE - CP6165-110



INLET ADAPTER
TIGHTENING TORQUE
17Nm



DRY BREAKS FITTED AS STANDARD
TIGHTENING TORQUES-

VALVE INTO BODY - 13Nm

CAP ONTO VALVE - 4Nm

APPLY A SMALL AMOUNT OF LOCITE 270
TO THREAD OF VALVE UPON ASSEMBLY INTO
THE BODY.

MATING PART - CP6300-32 FITTING (BLEED SYSTEM)

TYPICAL MTG TIGHTENING TORQUE
FOR GUIDANCE ONLY:
M12 - 65Nm & M10 - 54Nm

CALIPER BODY
THERMO-SENSOR
-CP6282-6 (P1100 TYPE)
-CP6282-7 (P11000 TYPE)

RETAINING SCREW
-CP3555-188 (M4x6)

SCALE 1:1

SHEET 1 OF 2

DRAWN

N STEVENS

APPROVED

DERIVED FROM

TITLE

6 POT GT CALIPER

DRG NO.

CP6165-1CD

INSTALLATION DRAWING

IF THIS DOCUMENT IS PRINTED IN HARDCOPY,
IT IS FOR INFORMATION USE ONLY AND THEREFORE
IS NOT SUBJECT TO UPDATING CONTROLS. ALWAYS
REFER TO SOLIDWORKS VIEWER FOR LATEST ISSUE



FIRST ANGLE
PROJECTION

THIS DRAWING IS CONFIDENTIAL AND IS SUPPLIED ON THE EXPRESS CONDITION THAT IT SHALL NOT BE LOANED OR COPIED OR DISCLOSED TO ANY OTHER PERSON OR USED FOR ANY OTHER PURPOSE WITHOUT THE WRITTEN CONSENT OF AP RACING LTD.



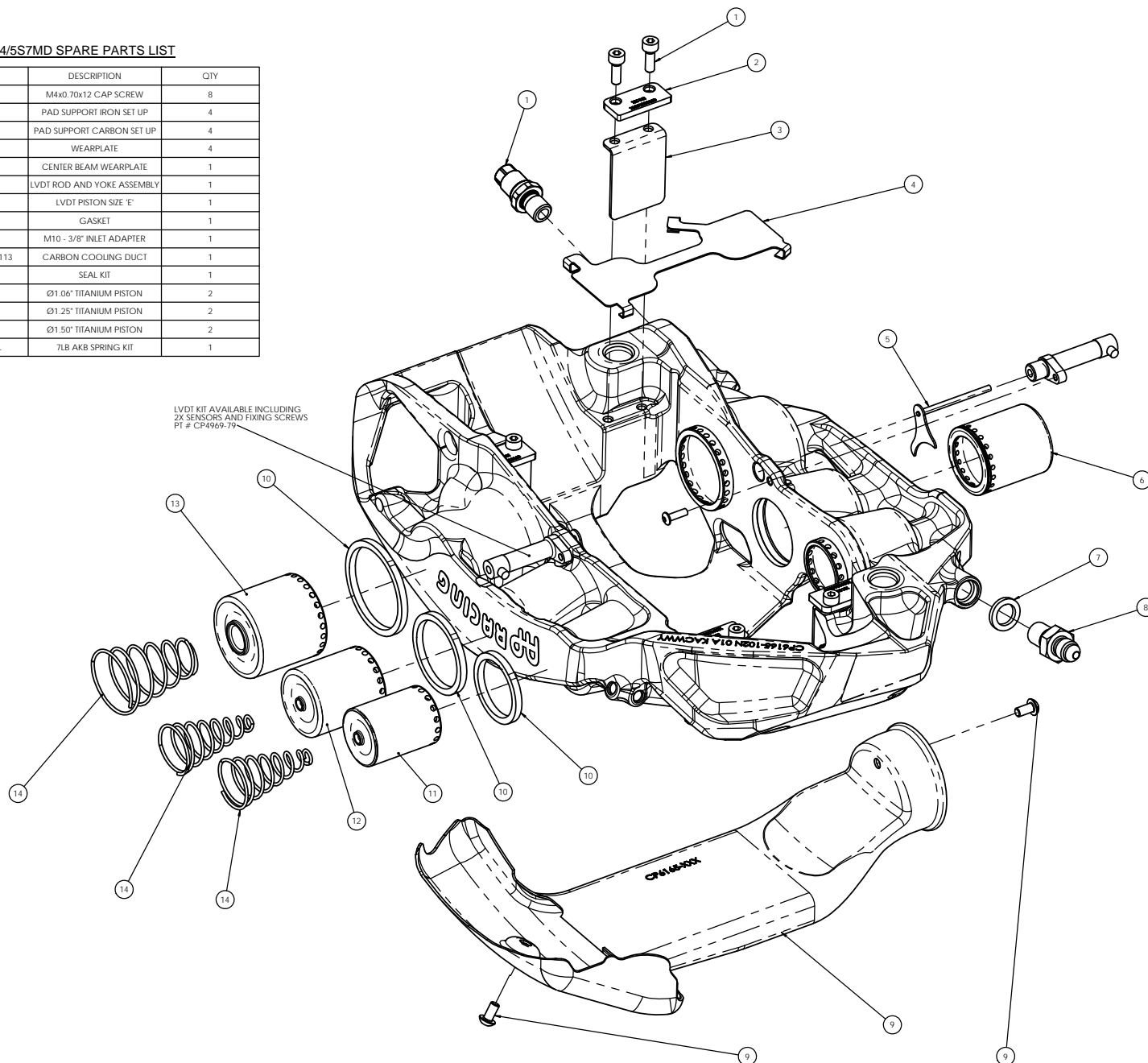
AP Racing
Wheler Road
Coventry
CV3 4LB

Tel: +44 024 7663 9595
Fax: +44 024 7663 9559
e-mail: sales@apracing.co.uk
Web site: [HTTP://www.apracing.com](http://www.apracing.com)

CP6165-2/3/4/5S7MD SPARE PARTS LIST

ITEM	PART NO.	DESCRIPTION	QTY
1	CP3215-115	M4x0.70x12 CAP SCREW	8
2	CP6165-109	PAD SUPPORT IRON SET UP	4
	CP6165-110	PAD SUPPORT CARBON SET UP	4
3	CP5856-120	WEARPLATE	4
4	CP6165-104	CENTER BEAM WEARPLATE	1
5	CP4969-15	LVDI ROD AND YOKE ASSEMBLY	1
6	CP4649-140	LVDI PISTON SIZE "E"	1
7	KL44517	GASKET	1
8	CP6160-107	M10 - 3/8" INLET ADAPTER	1
9	CP6165-112 OR -113	CARBON COOLING DUCT	1
10	CP8518-CEJ	SEAL KIT	1
11	CP6165-108	Ø1.06" TITANIUM PISTON	2
12	CP6165-107	Ø1.25" TITANIUM PISTON	2
13	CP6165-106	Ø1.50" TITANIUM PISTON	2
14	CP6518-7LBSSL	7LB AKB SPRING KIT	1

LVDT KIT AVAILABLE INCLUDING
2X SENSORS AND FIXING SCREWS
PT # CP4969-79



SCALE 1:1

SHEET 2 OF 2

DRAWN	N STEVENS
-------	-----------

APPROVED

DERIVED FROM

TITLE

6 POT GT CALIPER

DRG NO.

CP6165-1CD