

B1

INSTALLATION
DRAWING

IF THIS DOCUMENT IS PRINTED IN HARDCOPY,
IT IS FOR INFORMATION USE ONLY AND THEREFORE
IS NOT SUBJECT TO UPDATING CONTROL. ALWAYS
REFER TO SOLIDWORKS VIEWER FOR LATEST ISSUE

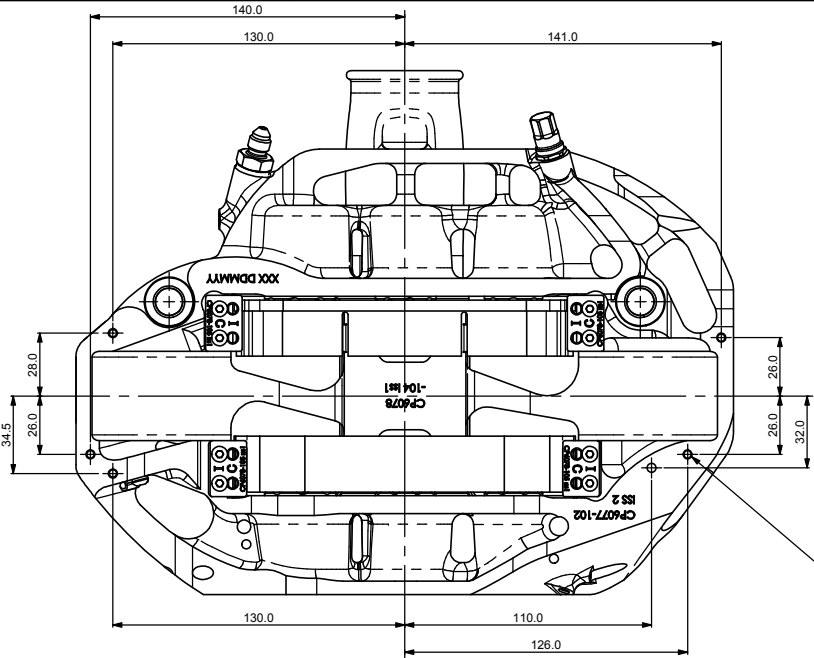
FIRST ANGLE
PROJECTION

THIS DRAWING IS CONFIDENTIAL AND IS SUPPLIED ON THE EXPRESS CONDITION THAT
IT SHALL NOT BE LOANED OR COPIED OR DISCLOSED TO ANY OTHER PERSON OR USED
FOR ANY OTHER PURPOSE WITHOUT THE WRITTEN CONSENT OF AP RACING LTD.

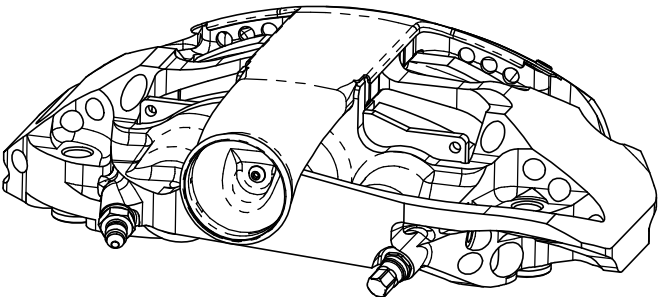
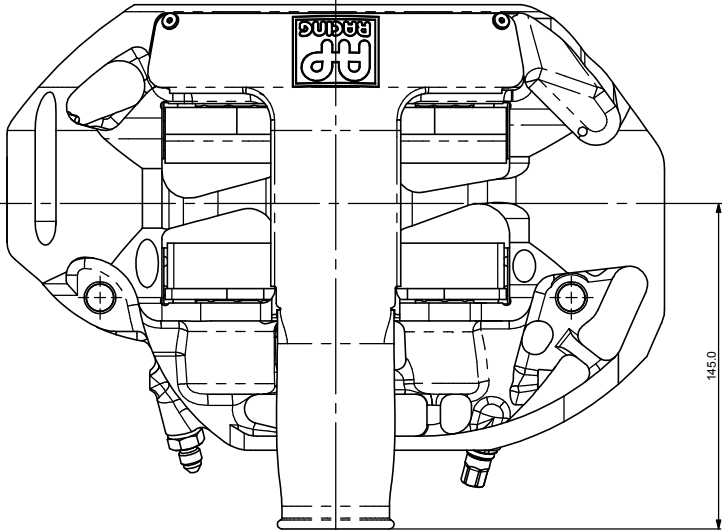
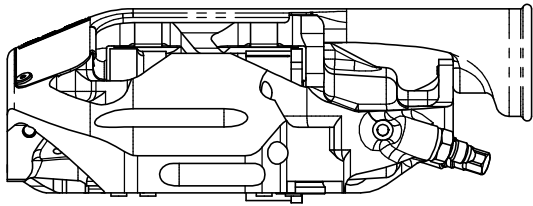
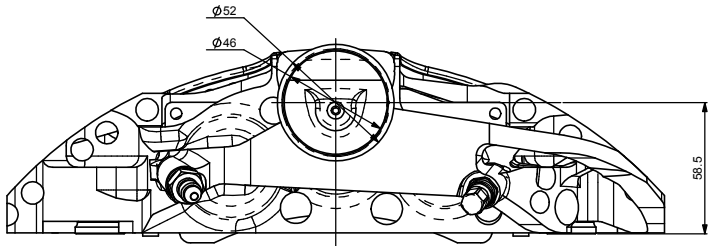
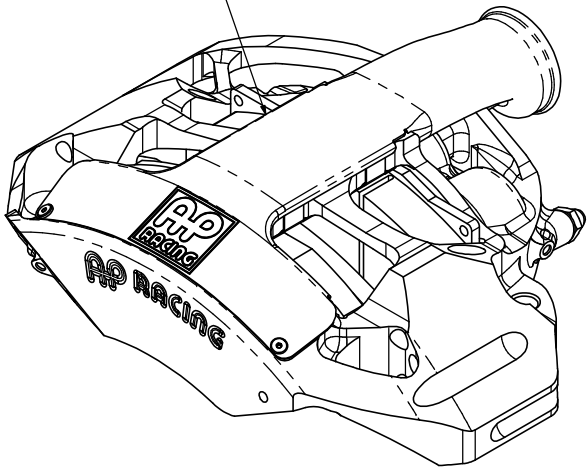


AP Racing
Wheler Road
Coventry
CV3 4LB
Tel: +44 024 7663 9595
Fax: +44 024 7663 9559
e-mail: sales@apracings.co.uk
Web site: HTTP://www.apracings.com

© AP Racing Ltd. 2005



CARBON DUCT KIT
CP6078-107



Rev No	Alterations		Zone	Initials
	Date & No.	Particulars		
3		SEE SHEET 1 FOR ISSUE CHANGE DETAILS		

SCALE 1:1		SHEET 1 OF 3	
DRAWN		Jon Tait	
APPROVED			
DERIVED FROM		CP6078-1CD	
TITLE			
6 PISTON MONOBLOC RADICAL GT CALIPER			
DRG NO.		CP6077-1CD	

B1

INSTALLATION DRAWING

IF THIS DOCUMENT IS PRINTED IN HARD COPY,
IT IS FOR INFORMATION USE ONLY AND THEREFORE
IS NOT SUBJECT TO UPDATING CONTROLS. ALWAYS
REFER TO SOLIDWORKS VIEWER FOR LATEST ISSUE



THIS DRAWING IS CONFIDENTIAL AND IS SUPPLIED ON THE EXPRESS CONDITION THAT
IT SHALL NOT BE LOANED OR COPIED OR DISCLOSED TO ANY OTHER PERSON OR USED
FOR ANY OTHER PURPOSE WITHOUT THE WRITTEN CONSENT OF AP RACING LTD.

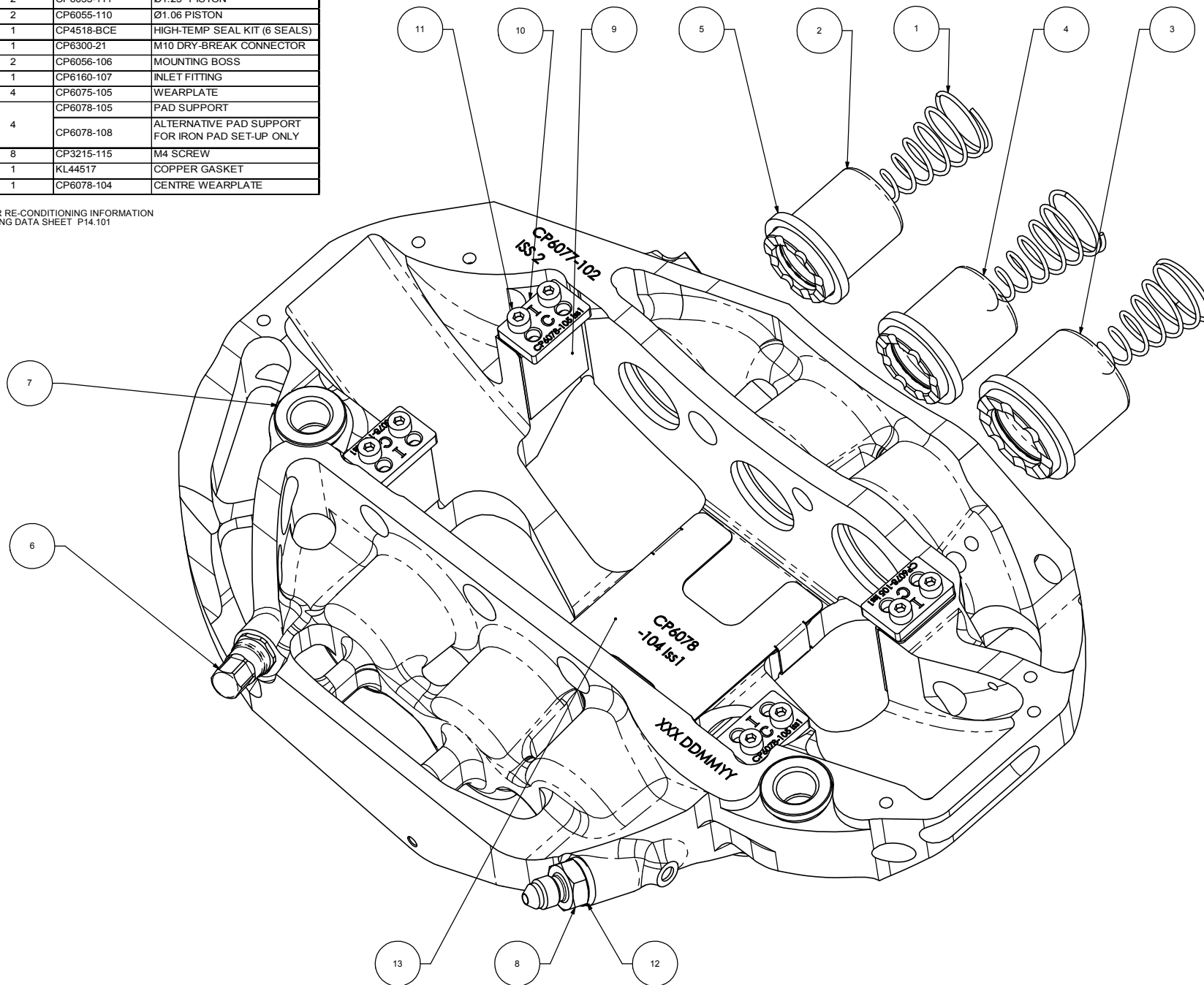


AP Racing
Wheler Road
Coventry
CV3 4LB
Tel: +44 024 7663 9595
Fax: +44 024 7663 9559
e-mail: sales@apracings.co.uk
Web site: HTTP://www.apracing.com

© AP Racing Ltd. 2005

SPARE PARTS LIST			
REF	QTY / CALIPER	PART NO.	DESCRIPTION
1	1	CP6518-7LBSSSS	7lb AKB SPRING KIT
2	2	CP6057-104	Ø26mm PISTON
3	2	CP6055-111	Ø1.25" PISTON
4	2	CP6055-110	Ø1.06 PISTON
5	1	CP4518-BCE	HIGH-TEMP SEAL KIT (6 SEALS)
6	1	CP6300-21	M10 DRY-BREAK CONNECTOR
7	2	CP6056-106	MOUNTING BOSS
8	1	CP6160-107	INLET FITTING
9	4	CP6075-105	WEARPLATE
10	4	CP6078-105	PAD SUPPORT
		CP6078-108	ALTERNATIVE PAD SUPPORT FOR IRON PAD SET-UP ONLY
11	8	CP3215-115	M4 SCREW
12	1	KL44517	COPPER GASKET
13	1	CP6078-104	CENTRE WEARPLATE

FOR CALIPER RE-CONDITIONING INFORMATION
SEE AP RACING DATA SHEET P14.101



Issue No	Alterations		Zone	Initials
	Date & No.	Particulars		
3		SEE SHEET 1 FOR ISSUE CHANGE DETAILS		

SCALE 1:1		SHEET 1 OF 3	
DRAWN	Jon Tait		
APPROVED			
DERIVED FROM			
TITLE			
6 PISTON MONOBLOC RADICAL GT CALIPER			
DRG NO.		CP6077-1CD	