

B1

INSTALLATION DRAWING

IF THIS DOCUMENT IS PRINTED IN HARDCOPY,
IT IS FOR INFORMATION USE ONLY AND THEREFORE
IS NOT SUBJECT TO UPDATING CONTROLS. ALWAYS
REFER TO SOLIDWORKS VIEWER FOR LATEST ISSUE



FIRST ANGLE
PROJECTION

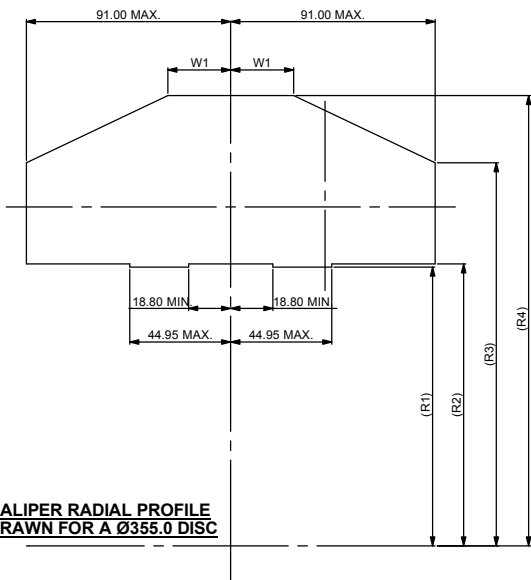
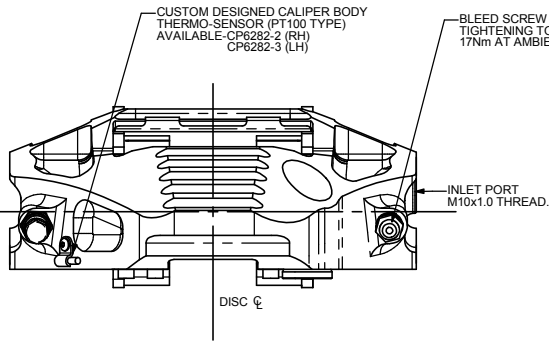
THIS DRAWING IS CONFIDENTIAL AND IS SUPPLIED ON THE EXPRESS CONDITION THAT
IT SHALL NOT BE LOANED OR COPIED OR DISCLOSED TO ANY OTHER PERSON OR USED
FOR ANY OTHER PURPOSE WITHOUT THE WRITTEN CONSENT OF AP RACING LTD.



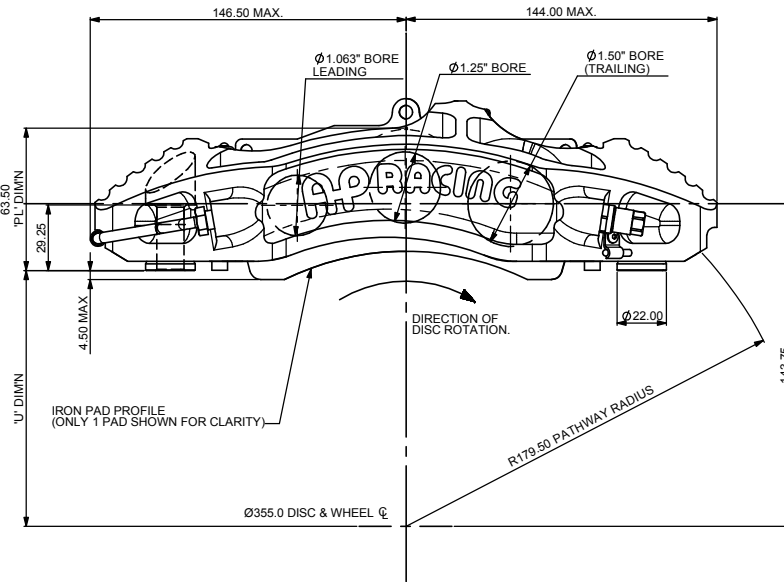
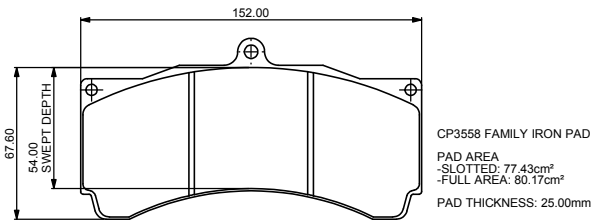
© AP Racing Ltd. 2005

AP Racing
Wheler Road
Coventry
CV3 4LB

Tel: +44 (0)24 7663 9595
Fax: +44 (0)24 7663 9559
e-mail: sales@apracings.co.uk
Web site: HTTP://www.apracings.com



**CALIPER RADIAL PROFILE
DRAWN FOR A Ø355.0 DISC**



GENERAL DESCRIPTION:
THIS IS A 6 PISTON DIFFERENTIAL BORE CALIPER DESIGNED TO OPERATE ON AN
IRON DISC OF UP TO Ø355.0mm X 35.6mm
STAINLESS STEEL BRIDGE PIPES AND PAD ABUTMENT WEAR PLATES ARE FITTED.
SEALS ARE HIGH TEMPERATURE 'SEAL-IN-BORE' TYPE.

TYPICAL APPLICATION:
LMP 675 / SPRINT GT

TECHNICAL INFORMATION:
TOTAL PISTON AREA: 50.1cm²
PISTON MATERIAL: STAINLESS STEEL
BODY MATERIAL: ALUMINIUM ALLOY
HYDRAULIC CONNECTIONS: M10x1.0
BRAKE PADS: CP3558 FAMILY PADS CAN BE USED WITH AN IRON DISC.
ASSEMBLY WEIGHT: 2.4KG

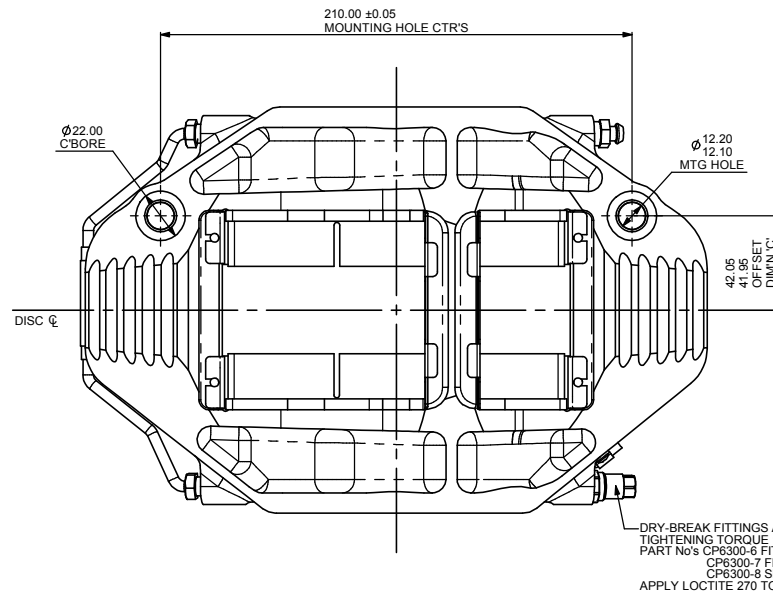
INSTALLATION INFORMATION
DISC & CALIPER MOUNTING TOLERANCES TO BE SUCH THAT THE DISC
IS CENTRAL TO THE CALIPER TO WITHIN ±0.5mm.
DISC DIAMETRAL CLEARANCE SHOULD BE 2.0mm NOM. FROM DISC O.D.
TO PATHWAY. THE O.D. CLEARANCE CAN BE REDUCED TO 1.8mm MIN.
FOR SMALL DIA. DISCS (280.0mm & LOWER).

KEY TO DIMENSIONS:
DIMENSION 'PL': TOP OF PAD MATERIAL TO MOUNTING BOSS FACE WITH PAD
SITTING DOWN ON LEDGE.
DIMENSION 'U': WHEEL CENTRE LINE TO CALIPER MOUNTING BOSS FACE (DISC
Ø/2)-DIMENSION 'PL'.
DIMENSION 'C': OFFSET-DISC CENTRE LINE TO MOUNTING HOLES.
EFFECTIVE RAD: DISTANCE FROM WHEEL CENTRE LINE TO NOMINAL PISTON
CENTRE LINE.

AP RACING TECHNICAL SECTION WILL BE PLEASED TO ADVISE ON THE MOST
SUITABLE EQUIPMENT FOR ANY PARTICULAR APPLICATION.

CALIPER PART NUMBERS
CP6066-25TLR - RIGHT HAND TRAILING
CP6066-35TLR - LEFT HAND TRAILING

SEE SHEET 2 FOR SPARE PARTS LIST



CALIPER RADIAL PROFILE DATA

DISC Ø	DISC WIDTH	W1	R1	R2	R3	R4	EFF RAD	U' DIM'N
355.0	35.6	28.5	121.6	125.6	170.7	200.7	151.1	114.0

DISC Ø	DISC WIDTH	W1	R1	R2	R3	R4	EFF RAD	U' DIM'N
340.0	35.6	28.2	114.5	118.0	163.3	195.3	143.8	106.5

SCALE 1:1 SHEET 1 OF 2

DRAWN D.A. ARROWSMITH

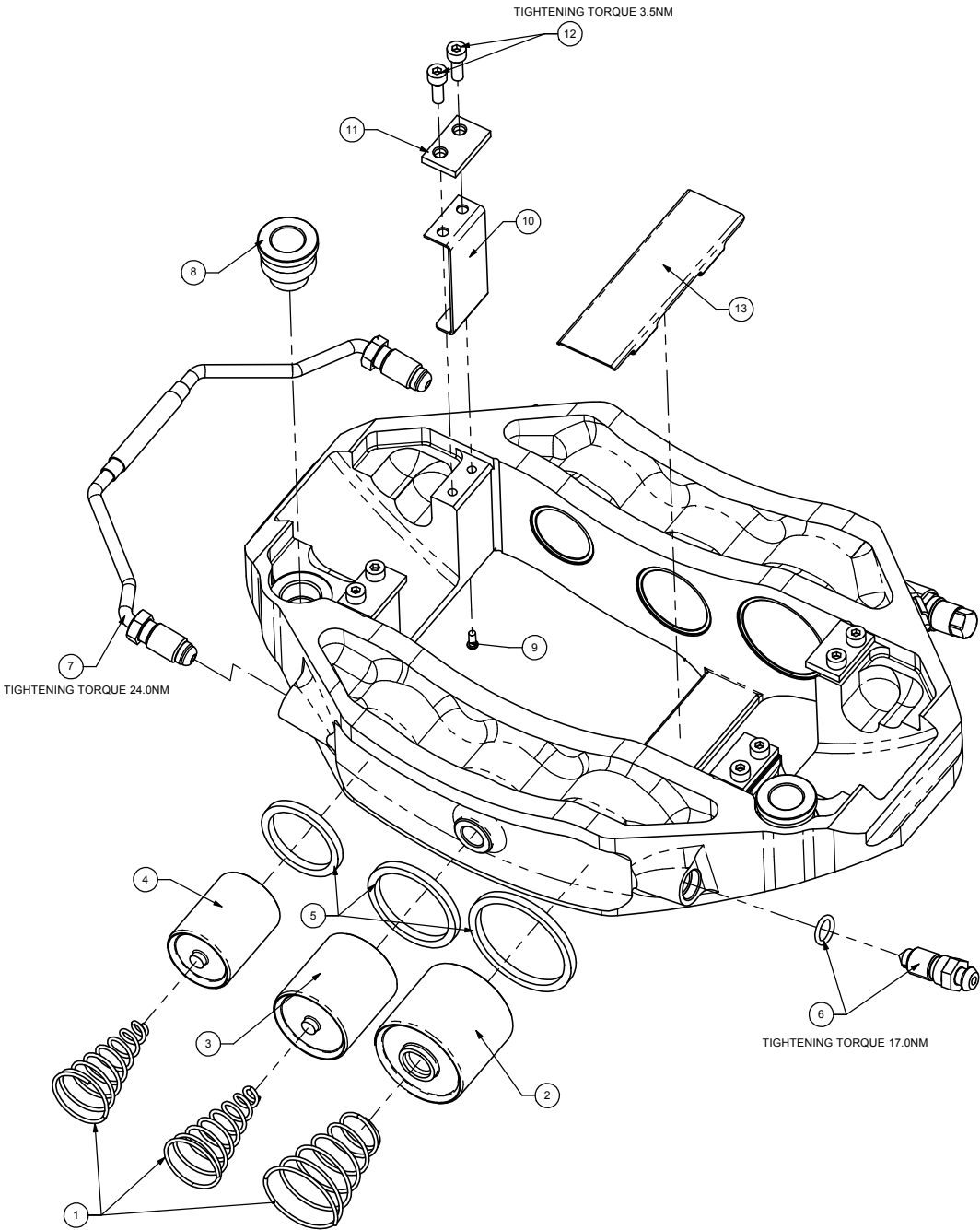
APPROVED

DERIVED FROM CP6056-1CD

TITLE
6 POT MONOBLOCK
CALIPER INSTALLATION

DRG NO. CP6056-11CD

SPARE PARTS LIST			
REF	QTY / CALIPER	PART NO.	DESCRIPTION
1	1	CP6518-7LBSSL	7.00LB AKB SPRING KIT
2	2	CP5015-107	Ø1.50" PISTON
3	2	CP4340-107	Ø1.25" PISTON
4	2	CP4340-106	Ø1.06" PISTON
5	1	CP4518-CEJ	HIGH-TEMP SEAL KIT (6 SEALS)
6	1	CP3880-1	M10 BLEEDSCREW KIT (2 OFF O-RING & SCREW)
7	1	CP6056-7	PIPE ASSEMBLY
8	2	CP6055-109	MOUNTING BOSS
9	4	CP3557-107	HAMMER DRIVE SCREW
10	4	CP6055-107	WEARPLATE
11	4	CP6230-110	PAD SUPPORT
12	8	CP3215-115	M4 SCREW
13	1	CP6056-104	CENTRE WEARPLATE



SCALE 1:1		SHEET 1 OF 2	
DRAWN		D.ARROWSMITH	
APPROVED			
DERIVED FROM		CP6056-1CD	
TITLE			
6 POT MONOBLOCK			
CALIPER INSTALLATION			
DRG NO.		CP6056-11CD	