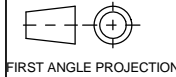


# A2 INSTALLATION DRAWING

If this document is printed in hardcopy, it is for information use only and therefore is not subject to updating controls. Always refer to viewer for latest issue.



THIS DRAWING IS CONFIDENTIAL AND IS SUPPLIED ON THE EXPRESS CONDITION THAT IT SHALL NOT BE LOANED OR COPIED OR DISCLOSED TO ANY OTHER PERSON OR USED FOR ANY OTHER PURPOSE WITHOUT THE WRITTEN CONSENT OF AP RACING LTD.



AP Racing  
Wheler Road  
Coventry  
CV3 4LB

Tel: +44 024 7663 9595  
Fax: +44 024 7663 9599  
e-mail: sales@apracing.co.uk

© AP Racing Ltd. 2005

Web site: http://www.apracing.com

## O-RING FLUID PORT VERSION

NOTE:  
FITTING OF THE DRY-BLEED SYSTEM MAY AFFECT THE RADIAL PROFILE OF THE BRAKE CALIPER. IT IS THEREFORE ESSENTIAL THAT THE CLEARANCE BETWEEN THE CALIPER ASSEMBLY AND WHEEL IS CHECKED CAREFULLY BEFORE ANY CAR IS RUN.

TIGHTENING TORQUES:  
CP6300-30/27/21 MALE VALVE - 13Nm  
CP6300-32/8/228 VALVE CAP - 4Nm

SEAL KITS AVAILABLE:  
CP6300-30RK (TO SUIT CP6300-27 & -30)  
CP6300-21RK (TO SUIT CP6300-21)  
SEE SHEET 2 FOR MORE DETAILS

CP6300-32RK (TO SUIT CP6300-31, -32 & -36)  
SEE SHEET 5 FOR DETAILS

DRY BLEED VALVE	REPLACED BLEEDSCREW
CP6300-21 (M10)	CP4970-125
	CP4970-140
	CP4970-136
CP6300-27 & -30 (3/8")	CP5820-115
	CP6297-112

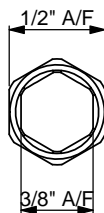
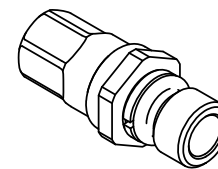
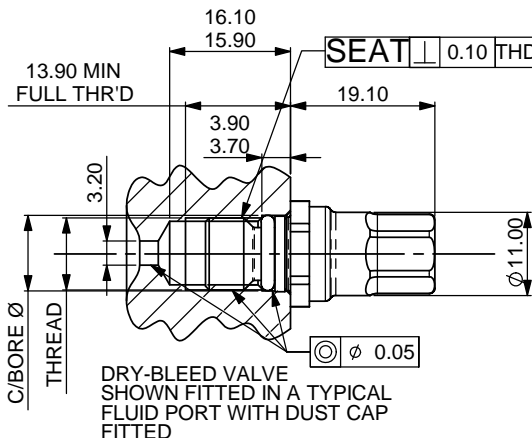
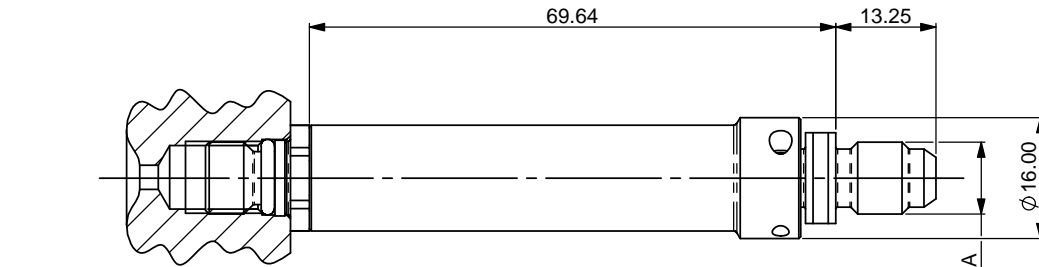


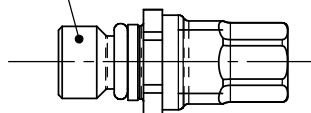
CHART ABOVE SHOWS PART No. OF THE RELEVANT BLEEDSCREWS THAT THE DRY-BLEED VALVES REPLACE



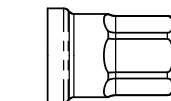
ISOMETRIC VIEW

THREAD	C/BORE Ø
M10 x 1.00	Ø11.05/10.95
3/8" x 24 UNF	Ø10.05/9.95

APPLY A 1-2mm DROP OF LOCTITE 270 TO THE 2ND FROM LAST THREAD WHEN FITTING.

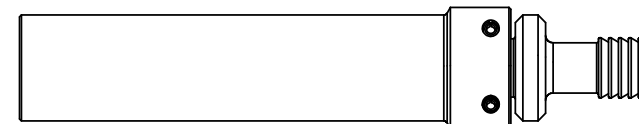


CP6300-30 3/8" UNF  
CP6300-21 M10x1.0  
CP6300-27 3/8" UNF (MALE) DRY-BLEED VALVES (INCLUDING DUST CAP)

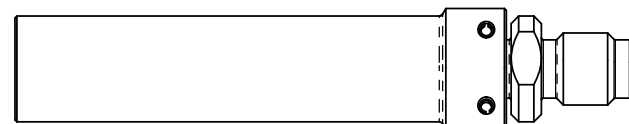


CP6300-32/8 TITANIUM OR CP6300-228 S/STEEL DRY-BLEED DUST CAP (AVAILABLE SEPARATELY AS SPARES)

CP6300-36 SHORT 150° BLEED COUPLING WITH NON-THREADED OUTLET & 1 WAY VALVE FITTED



CP6300-32 BLEED COUPLING WITH NON-THREADED OUTLET & 1 WAY VALVE FITTED



CP6300-31 THREADED BLEED COUPLING

NOTE: COUPLINGS ARE ONLY DESIGNED FOR BLEEDING THE CALIPERS AND NOT FOR USE AT HIGH PRESSURE

PART NUMBER	PORT THREAD	MATERIAL	WEIGHT
CP6300-21	M10 x 1.00	STAINLESS STEEL	16g
CP6300-27	3/8" x 24 UNF	STAINLESS STEEL	16g
CP6300-30	3/8" x 24 UNF	TITANIUM	8g
CP6300-39	3/8" x 24 UNF	ALUMINIUM	8g

Issue No.	Alterations		Zone	Initials
	Date & No.	Particulars		
1	28/11/06 B3750	FIRST ISSUE		SAT
2	05/02/07 B3750	CAP TIGHTENING TORQUE ADDED TO NOTES		SAT
3	13/03/07 B4795	SHEET 2 ADDED		SAT
4	04/06/07 B4823	CP6300-27 DETAILS ADDED CP6300-32 DETAILS ADDED		SAT
5	16/10/08 RAC21732	MORE DETAIL ADDED TO LOCTITE NOTE	3C	SAT
6	13/11/08 B5350	TYP DRY BLEED PORT DETAILS ADDED	5E	SAT
7	09/01/09 B5325	CP6300-36, 90° FEMALE ADDED		SAT
8	15/01/09 B5385	CP6300-28 NON O-RING SEAL VERSION ADDED		SAT
9	19/02/09 B5325	CP6300-36 150° FEMALE WAS 90°		SAT
10	20/07/09 B5648	CP6300-37 DETAILS ADDED		SAT
11	26/07/10 B5976	STAGE 3 SPRING RETAINER INSTALLATION NOTE UPDATED ON SHEETS 2 & 4		SAT
12	02/06/12 B6526	CP6300-39 DETAILS ADDED		RS
13	26/03/18 B7882	CP6300-32RK FEMALE VALVE REPAIR KIT ADDED, SHEET 5 EXPLODED VIEW ADDED	2F	SAT

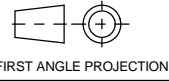
SCALE 2:1	SHEET 1 OF 5
DRAWN Steve Thomas	
APPROVED	
DERIVED FROM	

TITLE  
DRY BLEED SYSTEM  
INSTALLATION DRAWING

DRG NO. CP6300-13CD

# A2 INSTALLATION DRAWING

If this document is printed in hardcopy, it is for information use only and therefore is not subject to updating controls. Always refer to viewer for latest issue.

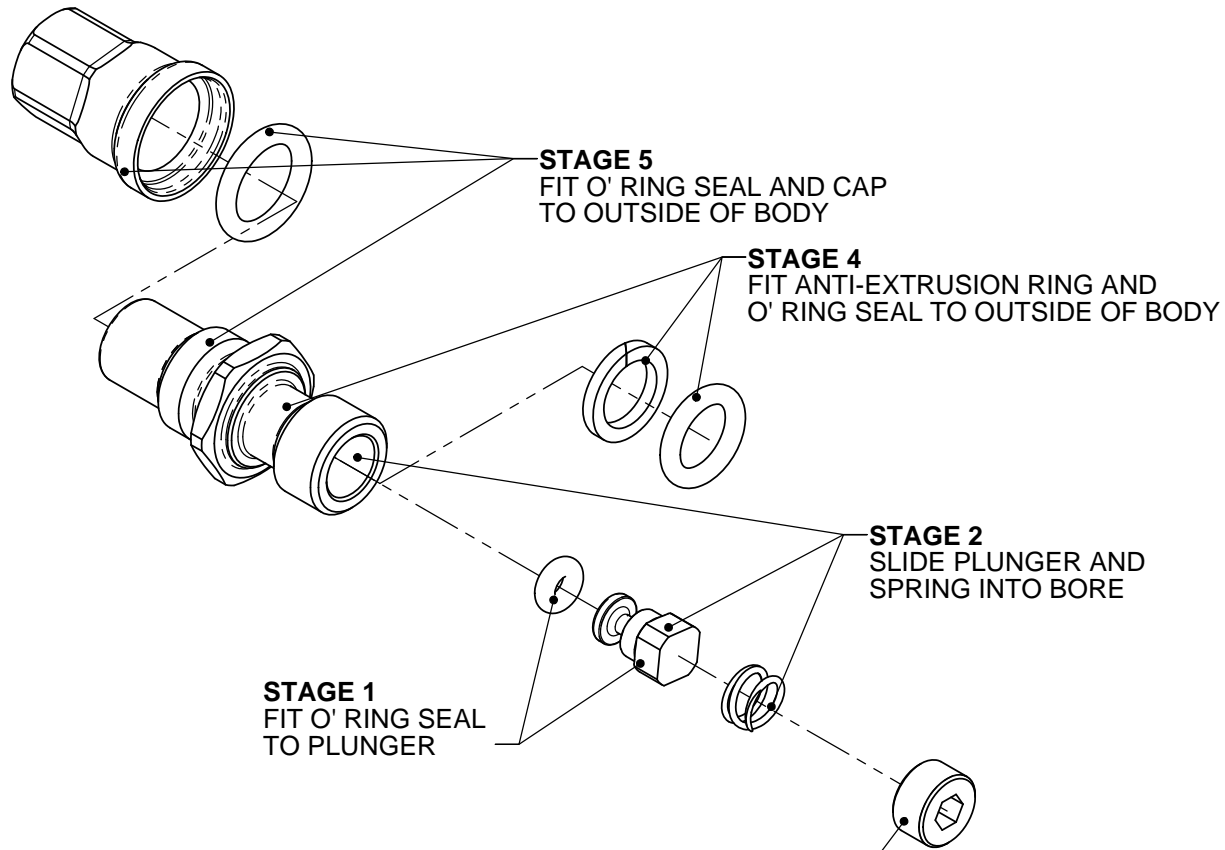


THIS DRAWING IS CONFIDENTIAL AND IS SUPPLIED ON THE EXPRESS CONDITION THAT IT SHALL NOT BE LOANED OR COPIED OR DISCLOSED TO ANY OTHER PERSON OR USED FOR ANY OTHER PURPOSE WITHOUT THE WRITTEN CONSENT OF AP RACING LTD.



**AP Racing**  
Wheler Road  
Coventry  
CV3 4LB  
Tel: +44 024 7663 9595  
Fax: +44 024 7663 9559  
e-mail: sales@ap racing.co.uk  
Web site: http://www.ap racing.com

## ASSEMBLY INSTRUCTIONS FOR MALE DRY BLEED FITTINGS CP6300-21, CP6300-27, CP6300-30 & CP6300-39.



**STAGE 5**  
FIT O' RING SEAL AND CAP  
TO OUTSIDE OF BODY

**STAGE 4**  
FIT ANTI-EXTRUSION RING AND  
O' RING SEAL TO OUTSIDE OF BODY

**STAGE 2**  
SLIDE PLUNGER AND  
SPRING INTO BORE

**STAGE 1**  
FIT O' RING SEAL  
TO PLUNGER

**STAGE 3**  
APPLY A SMALL AMOUNT OF LOCTITE  
270 TO THE SPRING RETAINER THREADS,  
SUFFICIENT TO FLOW AROUND 2 THREADS.  
SCREW INTO END OF BORE & TIGHTEN  
TO 4NM. WHEN TIGHT SPRING SHOULD  
PUSH PLUNGER NEAR TO FLUSH AT THE  
OTHER END OF THE BODY.

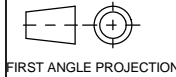
**NOTE:**  
O'RINGS IN STAGE 4 & STAGE 5 ARE THE SAME  
FOR CP6300-21 M10 FITTING. SEAL CP3076-128 (Ø7.66 x 1.78)  
FOR CP6300-27, -30 & -39 3/8" UNF FITTINGS O' RING FOR STAGE 4  
IS DIFFERENT. SEAL CP6300-101 (Ø6.35 x 1.78)

Issue No.	Alterations		Zone	Initials
	Date & No.	Particulars		

SCALE 3:1	SHEET 2 OF 5
DRAWN	Steve Thomas
APPROVED	
DERIVED FROM	
TITLE DRY BLEED FITTING ASSEMBLY DRAWING	
DRG NO.	CP6300-13CD

# A2 INSTALLATION DRAWING

If this document is printed in hardcopy, it is for information use only and therefore is not subject to updating controls. Always refer to viewer for latest issue.



THIS DRAWING IS CONFIDENTIAL AND IS SUPPLIED ON THE EXPRESS CONDITION THAT IT SHALL NOT BE LOANED OR COPIED OR DISCLOSED TO ANY OTHER PERSON OR USED FOR ANY OTHER PURPOSE WITHOUT THE WRITTEN CONSENT OF AP RACING LTD.



AP Racing  
Wheler Road  
Coventry  
CV3 4LB

Tel: +44 024 7663 9595  
Fax: +44 024 7663 9559  
e-mail: sales@apracings.co.uk  
Web site: http://www.apracings.com

© AP Racing Ltd. 2005

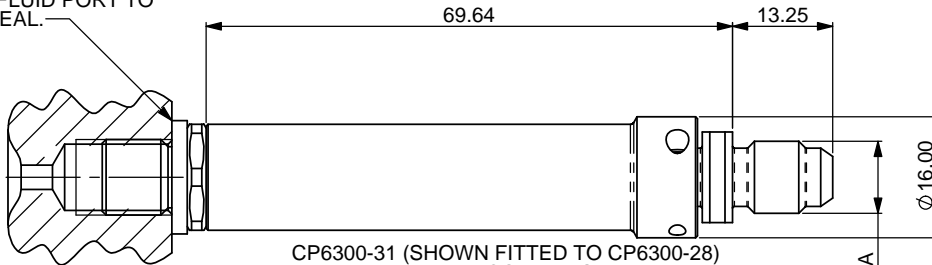
## NON O-RING FLUID PORT VERSION

**NOTE:**  
FITTING OF THE DRY-BLEED SYSTEM MAY EFFECT THE RADIAL PROFILE OF THE BRAKE CALIPER. IT IS THEREFORE ESSENTIAL THAT THE CLEARANCE BETWEEN THE CALIPER ASSEMBLY AND WHEEL IS CHECKED CAREFULLY BEFORE ANY CAR IS RUN.

**TIGHTENING TORQUES:**  
CP6300-28 & -37 MALE VALVE - 13Nm  
CP6300-228 VALVE CAP - 4Nm

**SEAL KITS AVAILABLE:**  
CP6300-28RK (TO SUIT CP6300-28 & -37)  
SEE SHEET 4 FOR MORE DETAILS

CALIPER WILL REQUIRE A MINIMUM Ø16 SPOTFACE AROUND FLUID PORT TO ALLOW GASKET TO SEAL.



CP6300-31 (SHOWN FITTED TO CP6300-28)  
THREADED BLEED COUPLING

DRY BLEED VALVE	REPLACED BLEEDSCREW
CP6300-28 (M10)	3486-268
	CP3720-173
	CP3720-183
	CP3720-107
	CP3894-138
CP6300-37 (3/8")	3486-227
	CP3720-182

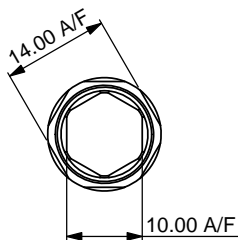
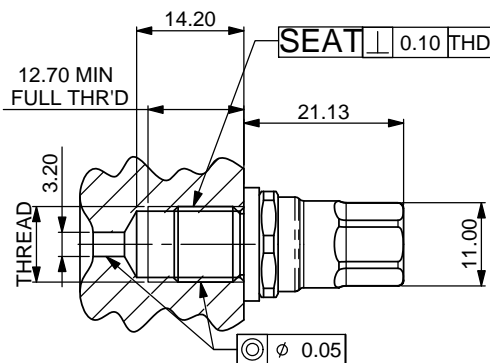
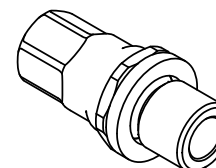


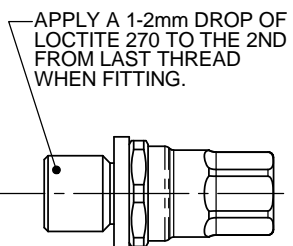
CHART ABOVE SHOWS PART No. OF THE RELEVANT BLEEDSCREWS THAT THE DRY-BLEED VALVES REPLACE



DRY-BLEED VALVE SHOWN FITTED IN A TYPICAL FLUID PORT WITH DUST CAP FITTED

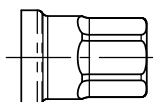


ISOMETRIC VIEW

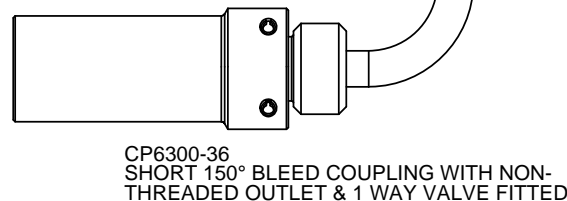


APPLY A 1-2mm DROP OF LOCTITE 270 TO THE 2ND FROM LAST THREAD WHEN FITTING.

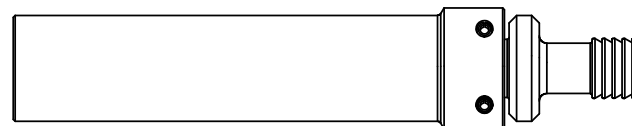
CP6300-28 M10x1.0  
CP6300-37 3/8" x 24 UNF (MALE) DRY-BLEED VALVES (INCLUDING DUST CAP)



CP6300-228 S/STEEL DRY-BLEED DUST CAP (AVAILABLE SEPARATELY AS SPARES)



CP6300-36 SHORT 150° BLEED COUPLING WITH NON-THREADED OUTLET & 1 WAY VALVE FITTED



CP6300-32 BLEED COUPLING WITH NON-THREADED OUTLET & 1 WAY VALVE FITTED

PART NUMBER	PORT THREAD	MATERIAL	WEIGHT
CP6300-28	M10 x 1.00 (NON O/RING PORT)	STAINLESS STEEL	17g
CP6300-37	3/8" x 24 UNF (NON O/RING PORT)	STAINLESS STEEL	17g

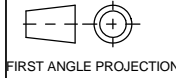
NOTE: COUPLINGS ARE ONLY DESIGNED FOR BLEEDING THE CALIPERS AND NOT FOR USE AT HIGH PRESSURE

Issue No.	Alterations		Zone	Initials
	Date & No.	Particulars		

SCALE 2:1	SHEET 3 OF 5
DRAWN	Steve Thomas
APPROVED	
DERIVED FROM	
TITLE DRY BLEED SYSTEM INSTALLATION DRAWING	
DRG NO.	CP6300-13CD

# A2 INSTALLATION DRAWING

If this document is printed in hardcopy, it is for information use only and therefore is not subject to updating controls. Always refer to viewer for latest issue.



THIS DRAWING IS CONFIDENTIAL AND IS SUPPLIED ON THE EXPRESS CONDITION THAT IT SHALL NOT BE LOANED OR COPIED OR DISCLOSED TO ANY OTHER PERSON OR USED FOR ANY OTHER PURPOSE WITHOUT THE WRITTEN CONSENT OF AP RACING LTD.



AP Racing  
Wheler Road  
Coventry  
CV3 4LB

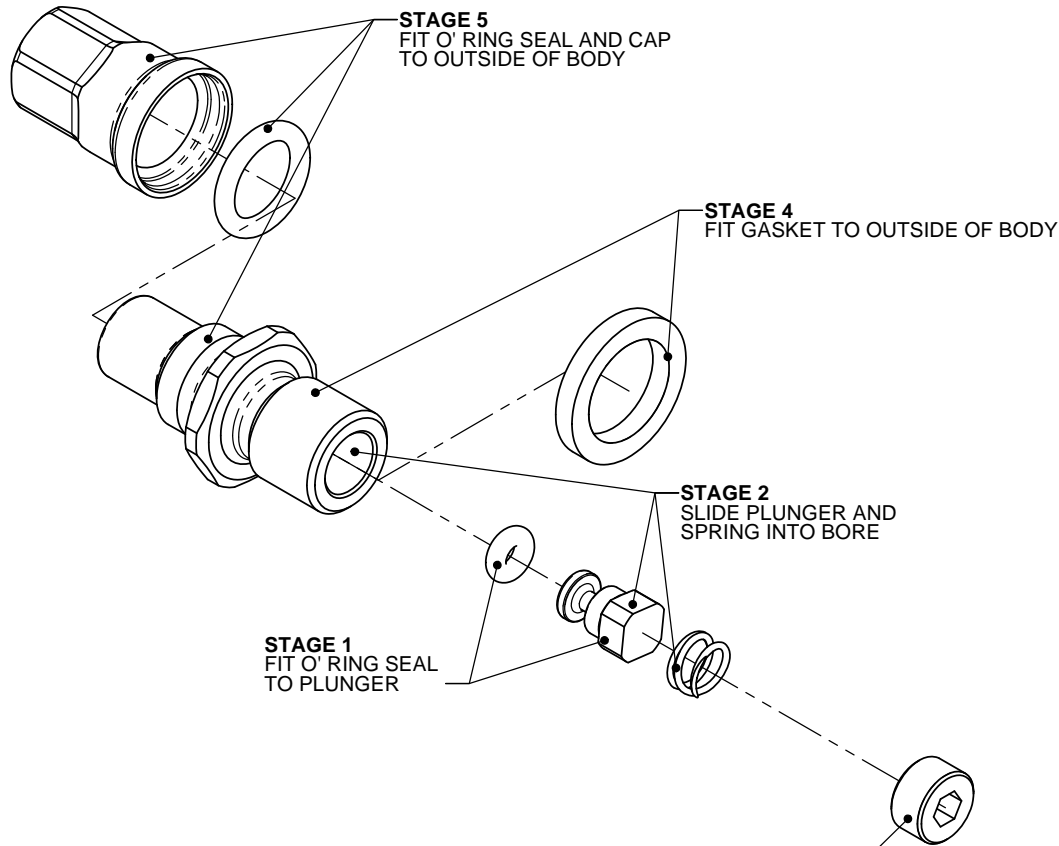
Tel: +44 024 7663 9595  
Fax: +44 024 7663 9559  
e-mail: sales@apracing.co.uk  
Web site: http://www.apracing.com

© AP Racing Ltd. 2005

## ASSEMBLY INSTRUCTIONS FOR MALE DRY BLEED FITTINGS CP6300-28 & CP6300-37

### NOTE:

ALL SEALS TO BE LUBRICATED  
AS PER MIS0010.



**STAGE 1**  
FIT O' RING SEAL  
TO PLUNGER

**STAGE 2**  
SLIDE PLUNGER AND  
SPRING INTO BORE

**STAGE 3**  
APPLY A SMALL AMOUNT OF LOCTITE  
270 TO THE SPRING RETAINER THREADS,  
SUFFICIENT TO FLOW AROUND 2 THREADS.  
SCREW INTO END OF BORE & TIGHTEN  
TO 4NM. WHEN TIGHT SPRING SHOULD  
PUSH PLUNGER NEAR TO FLUSH AT THE  
OTHER END OF THE BODY.

**STAGE 4**  
FIT GASKET TO OUTSIDE OF BODY

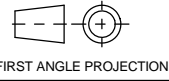
**STAGE 5**  
FIT O' RING SEAL AND CAP  
TO OUTSIDE OF BODY

Issue No.	Alterations		Zone	Initials
	Date & No.	Particulars		

SCALE 3:1	SHEET 4 OF 5
DRAWN	Steve Thomas
APPROVED	
DERIVED FROM	
TITLE DRY BLEED FITTING ASSEMBLY DRAWING	
DRG NO.	CP6300-13CD

# A2 INSTALLATION DRAWING

If this document is printed in hardcopy, it is for information use only and therefore is not subject to updating controls. Always refer to viewer for latest issue.



THIS DRAWING IS CONFIDENTIAL AND IS SUPPLIED ON THE EXPRESS CONDITION THAT IT SHALL NOT BE LOANED OR COPIED OR DISCLOSED TO ANY OTHER PERSON OR USED FOR ANY OTHER PURPOSE WITHOUT THE WRITTEN CONSENT OF AP RACING LTD.



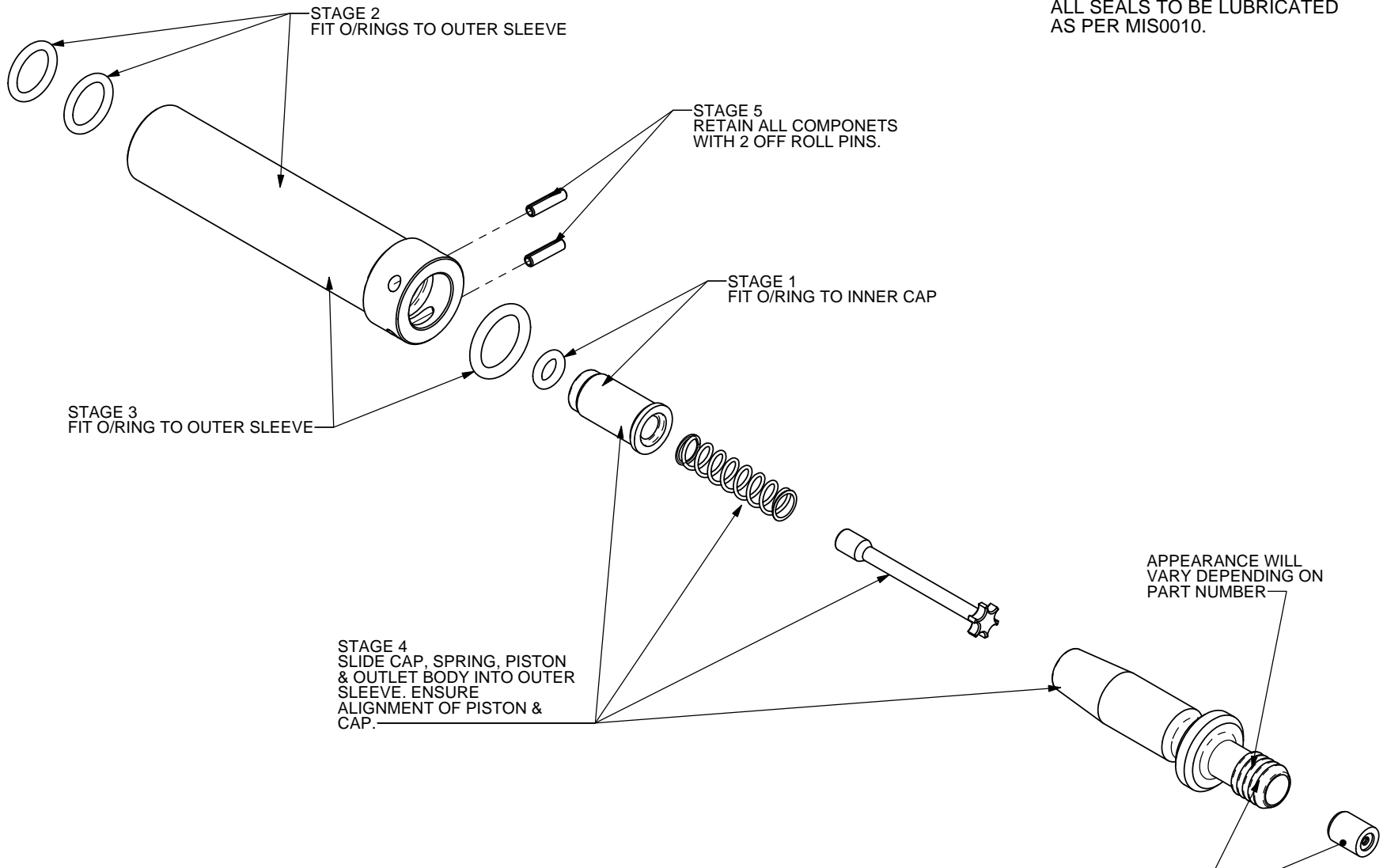
**AP Racing**  
Wheler Road  
Coventry  
CV3 4LB

Tel: +44 024 7663 9595  
Fax: +44 024 7663 9559  
e-mail: sales@ap racing.co.uk

© AP Racing Ltd. 2018 Web site: <http://www.apracing.com>

## ASSEMBLY INSTRUCTIONS FOR FEMALE DRY BLEED FITTINGS CP6300-31, -32 & -36

**NOTE:**  
ALL SEALS TO BE LUBRICATED AS PER MIS0010.



1 WAY VALVE FITTED ON INITIAL BUILD (NOT INCLUDED WITH CP6300-31)

Issue No.	Alterations		Zone	Initials
	Date & No.	Particulars		

SCALE 1:2	SHEET 5 OF 5
DRAWN	Steve Thomas
APPROVED	
DERIVED FROM	
TITLE DRY BLEED FITTING ASSEMBLY DRAWING	
DRG NO.	CP6300-13CD