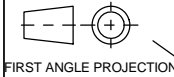


A2 INSTALLATION DRAWING

If this document is printed in hardcopy, it is for information use only and therefore is not subject to updating controls. Always refer to viewer for latest issue.



THIS DRAWING IS CONFIDENTIAL AND IS SUPPLIED ON THE EXPRESS CONDITION THAT IT SHALL NOT BE LOANED OR COPIED OR DISCLOSED TO ANY OTHER PERSON OR USED FOR ANY OTHER PURPOSE WITHOUT THE WRITTEN CONSENT OF AP RACING LTD.



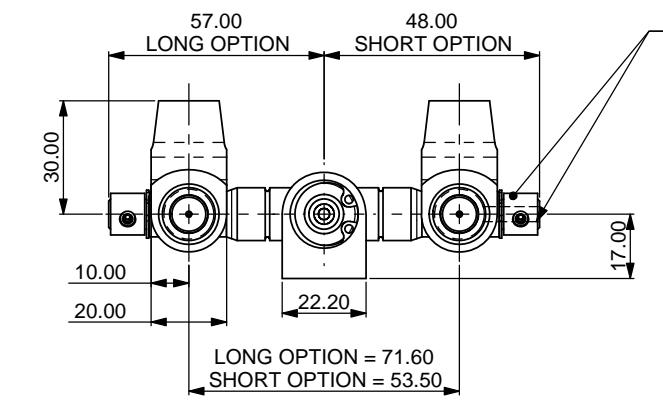
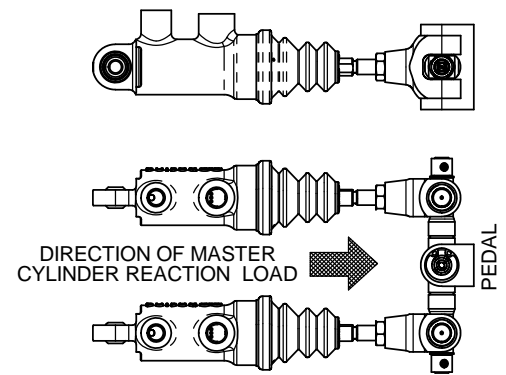
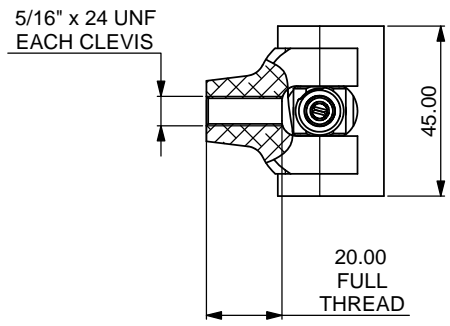
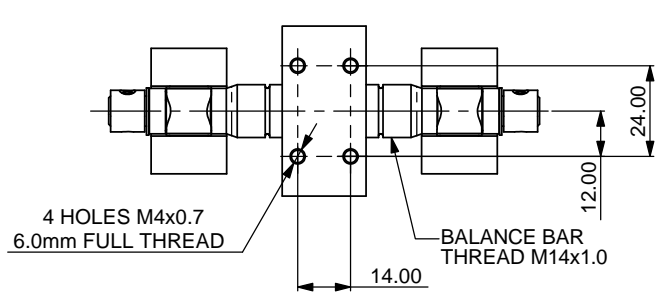
AP Racing
Wheler Road
Coventry
CV3 4LB

Tel: +44 024 7663 9595
Fax: +44 024 7663 9559
e-mail: sales@ap racing.co.uk

© AP Racing Ltd. 2005

Web site: <http://www.apracing.com>

Issue No.	Date & No.	Alterations	
		Particulars	Zone
1	15/02/2011 B6028	FIRST ISSUE	cd



Ø4.0 HOLE FOR CABLE ADJUSTOR.
2OFF M4x0.7 GRUB SCREW (4C) TO RETAIN CABLE (INCLUDED).
AP RACING CABLE ADJUSTOR - CP2905-18.
AND STEPPER MOTOR KIT - CP5500-14.
AVAILABLE FROM AP RACING.

THE DIRECTION OF LOAD AGAINST THE BALANCE BAR IS CRITICAL. PLEASE MAKE SURE THE CENTRAL TRUNNION IS POSITIONED AS SHOWN BELOW.

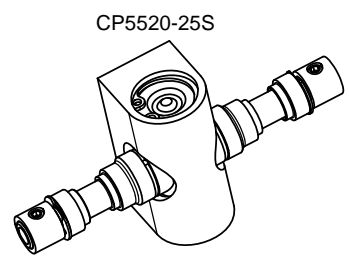
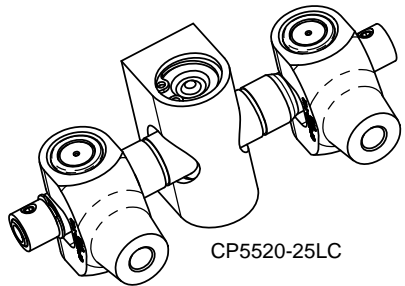
GENERAL DESCRIPTION

THIS SMALL AND COMPACT BALANCE BAR USES NEEDLE ROLLER BEARINGS, TO PROVIDE LOW HYSTERESIS AND HIGH EFFICIENCY. THIS SPECIFIC VERSION IS DESIGNED TO FIT TO OUR CP7855 TYPE CYLINDERS, AS SHOWN. OUR RECOMMENDED LIMITS ON BALANCE BAR ADJUSTMENT ARE GIVEN BELOW.

THE BALANCE BAR CAN COME WITH & WITHOUT CLEVIS'S, ALSO WITH A LONG OR A SHORT BALANCE BAR.

PART NUMBERS

CP5520-25S	CP5520-25L	CP5520-25SC	CP5520-25LC
SHORT BALANCE BAR	LONG BALANCE BAR	SHORT BALANCE BAR	LONG BALANCE BAR
WITHOUT CLEVIS'S	WITHOUT CLEVIS'S	WITH CLEVIS'S	WITH CLEVIS'S



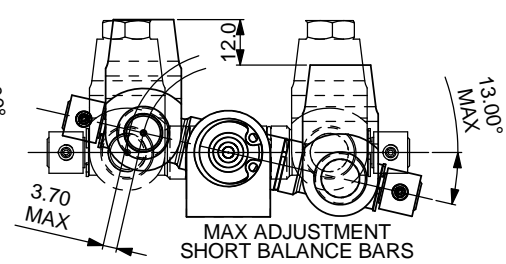
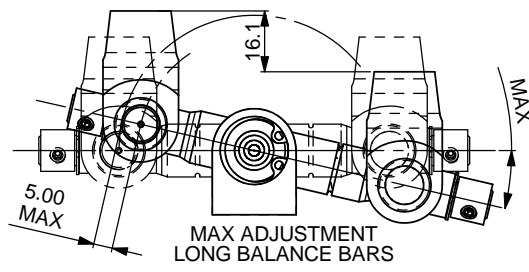
CP5520-25LC

CP5520-25S

THESE VIEWS SHOW 2 OF THE 4 OPTIONS

SEE SHEET 2 FOR SPARES INFORMATION

THE 2 VIEWS BELOW SHOW THE RECOMMEND ADJUSTMENT, THE MORE ADJUSTMENT YOU HAVE THE MORE INEFFICIENT THE BALANCE BAR BECOMES.



SCALE 1:1 SHEET 1 OF 2

DRAWN Chris Arrowsmith

APPROVED

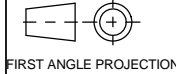
DERIVED FROM

TITLE
BALANCE BAR ASSEMBLY

DRG NO. CP5520-25CD

A2 INSTALLATION DRAWING

If this document is printed in hardcopy, it is for information use only and therefore is not subject to updating controls. Always refer to viewer for latest issue.



THIS DRAWING IS CONFIDENTIAL AND IS SUPPLIED ON THE EXPRESS CONDITION THAT IT SHALL NOT BE LOANED OR COPIED OR DISCLOSED TO ANY OTHER PERSON OR USED FOR ANY OTHER PURPOSE WITHOUT THE WRITTEN CONSENT OF AP RACING LTD.

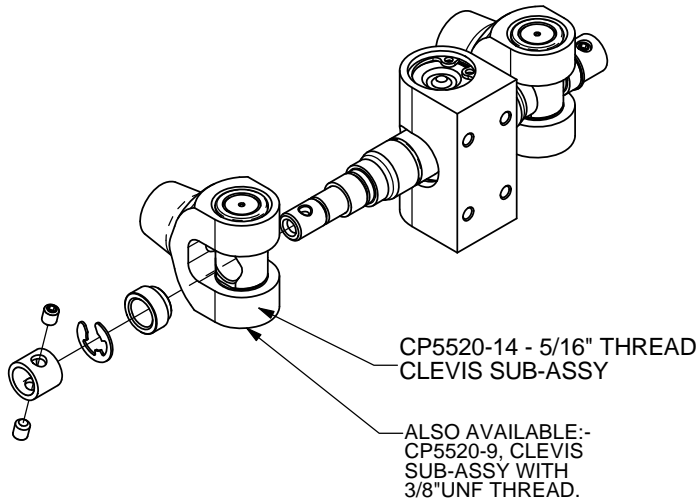


AP Racing
Wheler Road
Coventry
CV3 4LB

Tel: +44 024 7663 9595
Fax: +44 024 7663 9559
e-mail: sales@ap racing.co.uk
Web site: http://www.ap racing.com

© AP Racing Ltd. 2005

Issue No.	Alterations		Zone	Initials
	Date & No.	Particulars		
-	-	SEE SHEET 1 FOR ISSUE INFORMATION.	-	-



CP5520-14 - 5/16" THREAD CLEVIS SUB-ASSY

ALSO AVAILABLE:- CP5520-9, CLEVIS SUB-ASSY WITH 3/8" UNF THREAD.

BALANCE BAR ASSEMBLY INSTALLATION

A. FITTING THE BALANCE BAR TO THE PEDAL.

1. MAKE 4 HOLES IN THE PEDAL OF THE RECOMMENDED DIMENSIONS. THE CENTER HAS TO BE AT THE SAME HEIGHT AS THE MASTER CYLINDER CENTERLINE WHEN PEDAL IS SQUARE TO THE MASTER CYLINDER.

2. IN POSITIONING THE BALANCE BAR ON THE PEDAL, PLEASE TAKE NOTICE OF THE DIRECTION OF LOAD, AS SHOWN. IT MAY EFFECT THE POSITION YOU CHOOSE.

B. FITTING THE CLEVIS TO THE BALANCE BAR

1. PUSH THE CLEVIS SUB-ASSY (3) ON TO BALANCE BAR(1).

2. PUSH THE WASHER (3A) AGAINST THE CLEVIS SUB-ASSY(3)

3. PUSH CIRCLIP (3B) INTO PLACE ON BALANCE BAR (1) TO HOLD CLEVIS SUB-ASSY (3) IN PLACE.

4. FIT REMAINING SLEEVE (3D) & GRUB SCREWS (3C).

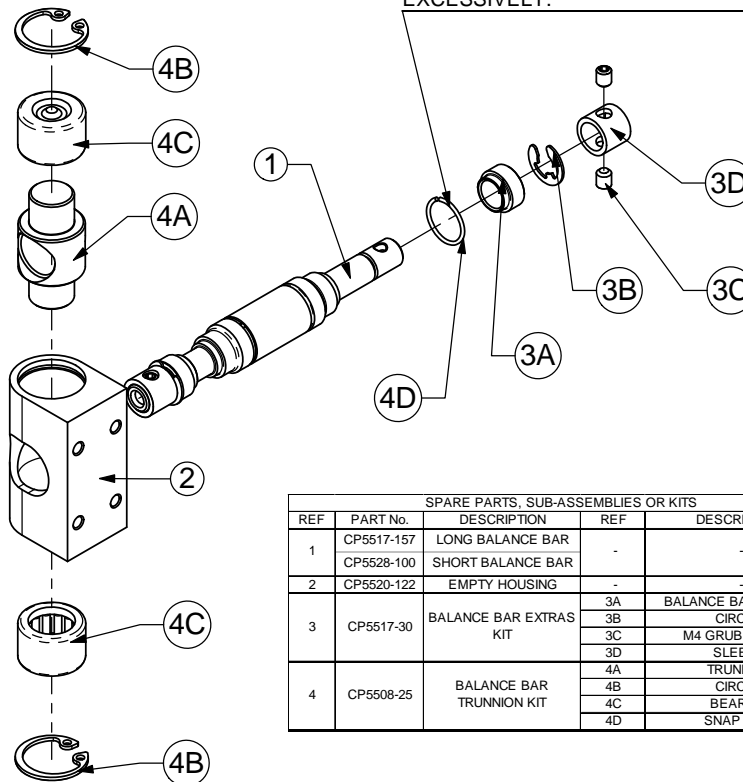
C. SETTING UP THE BALANCE BAR

1. INSTALL M8 NUTS PROVIDED ON MASTER-CYLINDER PUSHRODS.

2. ADJUST THE PUSHRODS SO THAT THE BALANCE BAR IS PERPENDICULAR TO THE PUSHRODS UNDER MAXIMUM LOAD. THE SYSTEM IS THEN SQUARE. IT IS NOT IMPORTANT THAT THE SYSTEM IS SQUARE WHEN RELEASED, BUT IT HAS TO BE UNDER LOAD.

FOR MAXIMUM EFFICIENCY, IT IS RECOMMENDED THAT THE PEDAL IS AT RIGHT ANGLE WITH THE PUSHRODS UNDER MAXIMUM BRAKING LOAD; AND ALSO KEEPING THE BALANCE BAR CENTRAL WITH BETTER SELECTION OF MASTER CYLINDER SIZES HELPS REDUCE INEFFICIENCIES.

ALSO MAKE SURE THAT THE MASTER-CYLINDER PISTONS FULLY RETURN BEFORE USE. THIS CAN BE CHECKED BY FEELING THE PUSHRODS FOR SLIGHT MOVEMENTS THERE SHOULD NOT BE ANY EXCESSIVE LOOSE MOVEMENT.



SPARE PARTS, SUB-ASSEMBLIES OR KITS					
REF	PART No.	DESCRIPTION	REF	DESCRIPTION	KIT QTY / ASS
1	CP5517-157	LONG BALANCE BAR	-	-	1 1
	CP5528-100	SHORT BALANCE BAR	-	-	1 1
2	CP5520-122	EMPTY HOUSING	-	-	1 1
			3A	BALANCE BAR SPACER	2 2
			3B	CIRCLIP	2 2
			3C	M4 GRUB SCREW	4 2
			3D	SLEEVE	2 1
3	CP5517-30	BALANCE BAR EXTRAS KIT	4A	TRUNNION	1 1
			4B	CIRCLIP	2 2
			4C	BEARING	2 2
			4D	SNAP RING	2 2
4	CP5508-25	BALANCE BAR TRUNNION KIT			
			4A	TRUNNION	1 1
			4B	CIRCLIP	2 2
			4C	BEARING	2 2

SCALE 1:1 SHEET 2 OF 2

DRAWN Chris Arrowsmith

APPROVED

DERIVED FROM

TITLE
BALANCE BAR ASSEMBLY

DRG NO. CP5520-25CD