

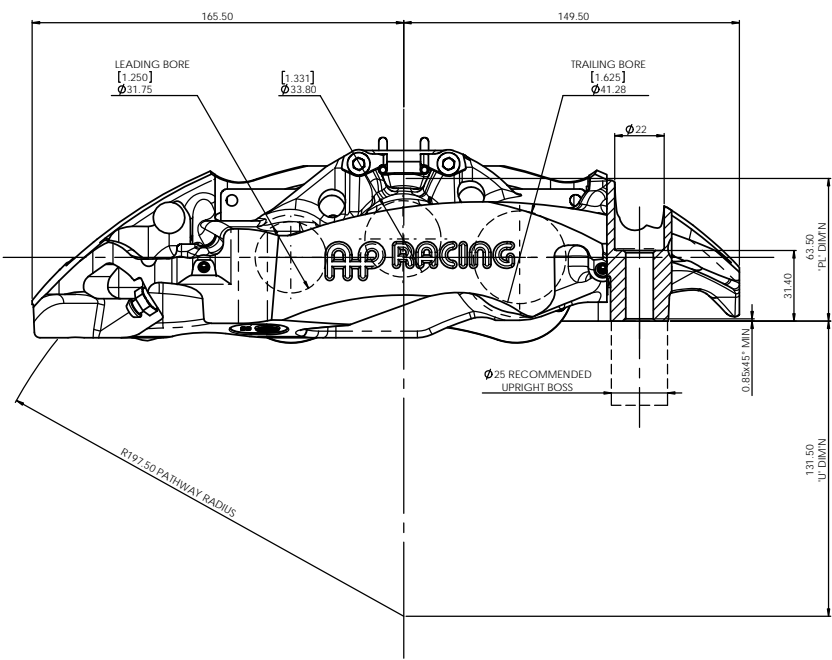
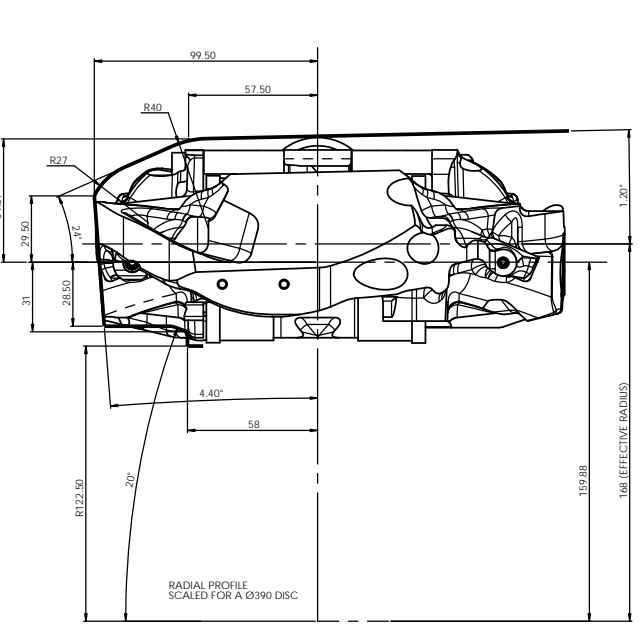
# B1 INSTALLATION DRAWING

IF THIS DOCUMENT IS PRINTED IN HARDCOPY, IT IS FOR INFORMATION USE ONLY AND THEREFORE IS NOT SUBJECT TO UPDATING CONTROLS. ALWAYS REFER TO SOLIDWORKS VIEWER FOR LATEST ISSUE



THIS DRAWING IS CONFIDENTIAL AND IS SUPPLIED ON THE EXPRESS CONDITION THAT IT SHALL NOT BE LOANED OR COPIED OR DISCLOSED TO ANY OTHER PERSON OR USED FOR ANY OTHER PURPOSE WITHOUT THE WRITTEN CONSENT OF AP RACING LTD.

**AP Racing**  
Wheler Road  
Coventry  
CV3 4LB  
Tel: +44 024 7663 9595  
Fax: +44 024 7663 9559  
e-mail: sales@apracings.co.uk  
Web site: HTTP://www.apracings.com



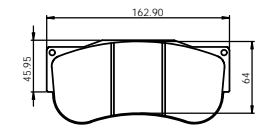
**GENERAL DESCRIPTION**  
6 PISTON DIFFERENTIAL BORE CALIPER TO SUIT UP TO Ø390 x 35.6MM IRON DISC PADS ARE RETAINED BY A BOLTED RETAINER, WITH A QUICK-RELEASE SPRING CLIP SUPPLIED FOR USE IN EVENTS WHEN FAST PAD CHANGES ARE REQUIRED.

**TECHNICAL INFORMATION & INSTALLATION DATA**  
TOTAL PISTON AREA (6) - 60.75cm<sup>2</sup>  
PISTON MATERIAL - STAINLESS STEEL  
BODY MATERIAL - ALUMINIUM ALLOY  
ASSEMBLY WEIGHT LESS PADS WITH BOTH PAD RETAINERS - 3.3KG  
MAX STACK = 35.56mm DISC + 2x 30mm PADS = 95.56MM  
MIN STACK = 47.50mm

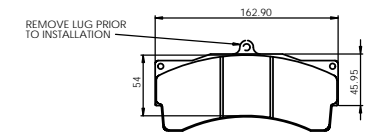
**INSTALLATION INFORMATION**  
DISC & CALIPER MOUNTING TOLERANCES TO BE SUCH THAT THE DISC IS CENTRAL TO THE CALIPER TO WITHIN ±0.5mm.  
CALIPER TO BE MOUNTED WITHIN ±15° FROM VERTICAL.  
DISC DIAMETRAL CLEARANCE SHOULD BE 2.5mm NOM. FROM DISC O.D. TO PATHWAY.

**KEY TO DIMENSIONS**  
'PL': TOP OF PAD MATERIAL TO MOUNTING BOSS FACE WITH PAD SITTING DOWN ON LEDGE  
'U': WHEEL CENTRE LINE TO CALIPER MOUNTING BOSS FACE (DISC Ø/2)-DIMENSION 'PL'

**CALIPER PART NUMBERS**  
CP6269-457L - RIGHT HAND LEADING (AHEAD OF AXLE)  
CP6269-557L - LEFT HAND LEADING (AHEAD AXLE)  
EXAMPLE PART # - CP6269-2 S (SIDE FEED) 7 (7lb AKB SPRINGS) L (STAINLESS PISTONS).

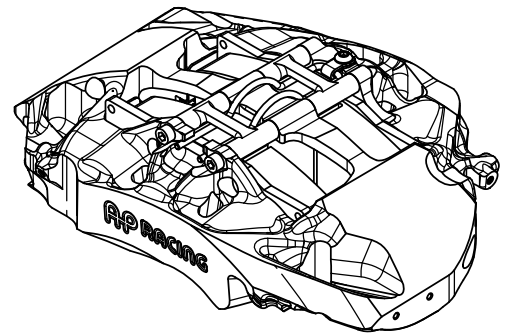
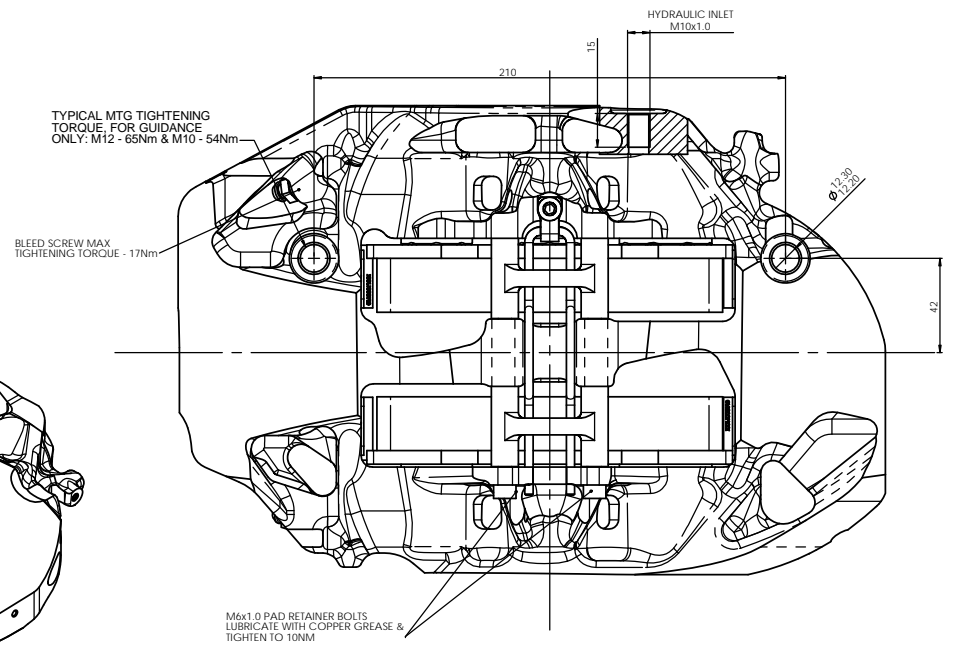
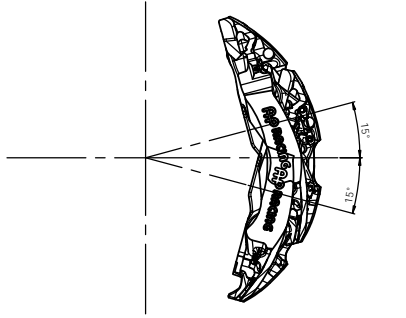


CP6210D64 FAMILY IRON PAD  
PAD AREA  
SLOTTED - 90.54cm<sup>2</sup>  
THICKNESS - 30MM



CP6210D54 FAMILY IRON PAD  
PAD AREA  
SLOTTED - 81.7cm<sup>2</sup>  
FULL AREA - 84.4cm<sup>2</sup>  
THICKNESS - 30MM

**OPTIMUM BLEED POSITIONING**  
FOR OPTIMUM BLEED, THE CALIPER SHOULD BE INSTALLED IN THE LEADING POSITION BETWEEN THE ANGLES SHOWN



Issue No	Alterations			Zone	Initials
	Date & No.	Particulars	#		
1	26/09/14 B7068	FIRST ISSUE			CH
2	08/03/15 RAC22152	MAX / MIN STACK ADDED			NJS
3	15/01/18 B7749	PICTORIAL UPDATE TO REFLECT CHANGE OF FORGING AND BALL & GRUB PORTING			SAT
4	19/04/18 B7889	33.80 WAS 34.00 SHEET 2 CHANGED PISTON SIZE TO 33.70 FROM 34.00			N0 M12 SGW

SCALE 1:1	SHEET 1 OF 2
DRAWN Connor Homeyard	
APPROVED	
DERIVED FROM	
TITLE GT3 6 POT BRAKE CALIPER	
DRG NO. CP6269-8CD	

