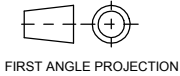


PUBLICATION P12.245

ISSUE: 1

If this document is printed in hardcopy, it is for information use only and therefore is not subject to updating controls. Always refer to viewer for latest issue.



THIS DRAWING IS CONFIDENTIAL AND IS SUPPLIED ON THE EXPRESS CONDITION THAT IT SHALL NOT BE LOANED OR COPIED OR DISCLOSED TO ANY OTHER PERSON OR USED FOR ANY OTHER PURPOSE WITHOUT THE WRITTEN CONSENT OF AP RACING LTD.



AP Racing
Wheler Road
Coventry
CV3 4LB

Tel: +44 024 7663 9595
Fax: +44 024 7663 9599
e-mail: sales@apracing.co.uk
Web site: HTTP://www.apracing.com

MITSUBISHI EVOLUTION X FRONT KIT NUMBER CP7040T1014

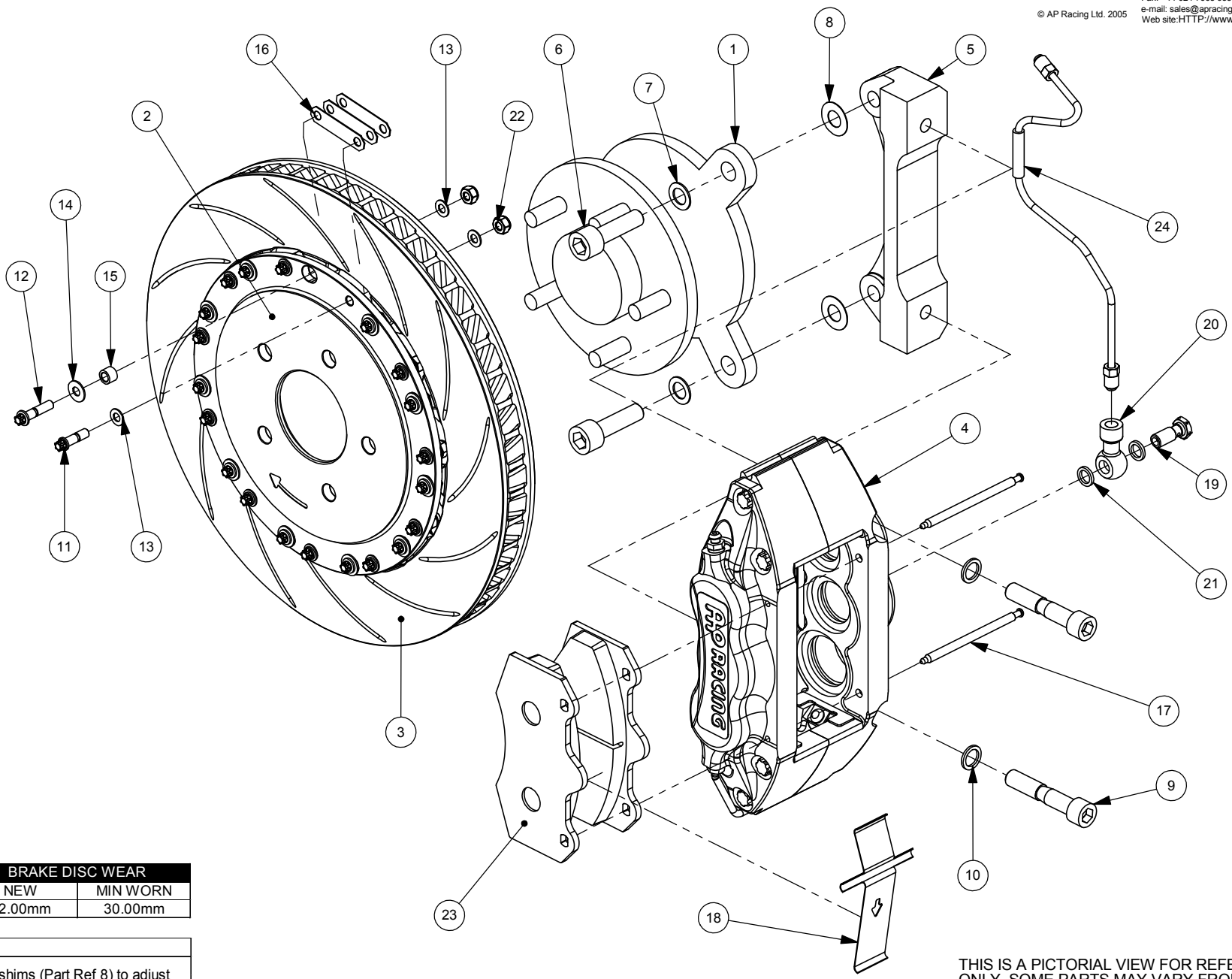
| BOM Table | | |
|-----------|---|--------|
| Ref | DESCRIPTION | QTY |
| 1 | MITSUBISHI FRONT UPRIGHT | 1 |
| 2 | MOUNTING BELL | 2 |
| 3 | VENTED DSC RIGHT HAND VENTED DISC LEFT HAND | 1 1 |
| 4 | CALIPER RIGHT HAND CALIPER LEFT HAND | 1 1 |
| 5 | MOUNTING BRACKET | 2 |
| 6 | M14x45 BRACKET Mtg BOLT | 4 |
| 7 | Ø20 BRACKET WASHER | 4 |
| 8 | 0.5mm BRACKET SHIM | 12 |
| 9 | M12x65 CALIPER Mtg BOLT | 4 |
| 10 | Ø18 CALIPER WASHER | 4 |
| 11 | 1/4"UNF TORX BOLT | 24 |
| 12 | 1/4"UNF TORX BOLT | 24 |
| 13 | Ø12.5 DISC WASHER | 72 |
| 14 | Ø16 DISC WASHER | 24 |
| 15 | SLEEVE | 24 |
| 16 | STEEL STRAP | 72 |
| 17 | PAD RETAINER PINS | 4 |
| 18 | ANTI-RATTLE CLIP | 2 |
| 19 | BANJO BOLT | 2 |
| 20 | M10x1.0 BANJO ADAPTOR | 2 |
| 21 | GASKET | 4 |
| 22 | PHILDAS NUT | 22 |
| 23 | PAD | 4 |
| 24 | PIPE ASSEMBLY RIGHT HAND PIPE ASSEMBLY LEFT HAND | 1 1 |

| Tightening Torques | |
|-----------------------|--------|
| Part Ref # | Torque |
| Bolt Ref 6 | 80NM |
| Bolt Ref 9 | 68NM |
| Bolt/Nut Ref 11/12/17 | 14NM |
| Tube Nuts Ref 21 | 22NM |
| Caliper Bleed Screw | 17NM |

| BRAKE DISC WEAR | |
|-----------------|----------|
| NEW | MIN WORN |
| 32.00mm | 30.00mm |

Comments

Check caliper is central over disc, use 0.5mm shims (Part Ref 8) to adjust bracket if required, note disc assembly direction arrow on OD of bell
Illustration is of right hand assembly



PLEASE RETAIN THIS SHEET FOR FUTURE REFERENCE

THIS IS A PICTORIAL VIEW FOR REFERENCE ONLY. SOME PARTS MAY VARY FROM THOSE SUPPLIED. AP RACING RESERVE THE RIGHT TO CHANGE COMPONENTS WITHOUT PRIOR NOTICE. Drawn By: Oliver Moore