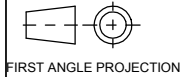


A2 INSTALLATION DRAWING

If this document is printed in hardcopy, it is for information use only and therefore is not subject to updating controls. Always refer to viewer for latest issue.



THIS DRAWING IS CONFIDENTIAL AND IS SUPPLIED ON THE EXPRESS CONDITION THAT IT SHALL NOT BE LOANED OR COPIED OR DISCLOSED TO ANY OTHER PERSON OR USED FOR ANY OTHER PURPOSE WITHOUT THE WRITTEN CONSENT OF AP RACING LTD.



AP Racing
Wheler Road
Coventry
CV3 4LB

Tel: +44 024 7663 9595
Fax: +44 024 7663 9559
e-mail: sales@apracing.com

© AP Racing Ltd. 2005

Web site: <http://www.apracing.com>

O-RING FLUID PORT VERSION

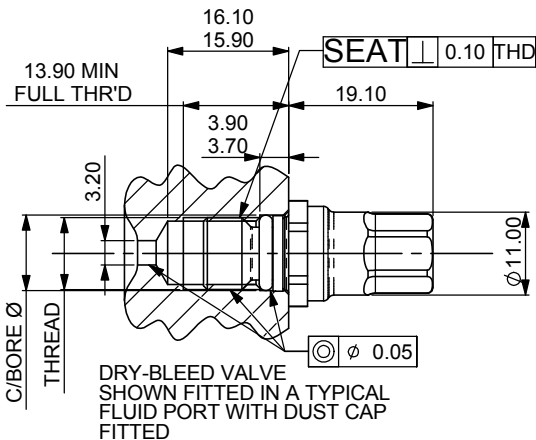
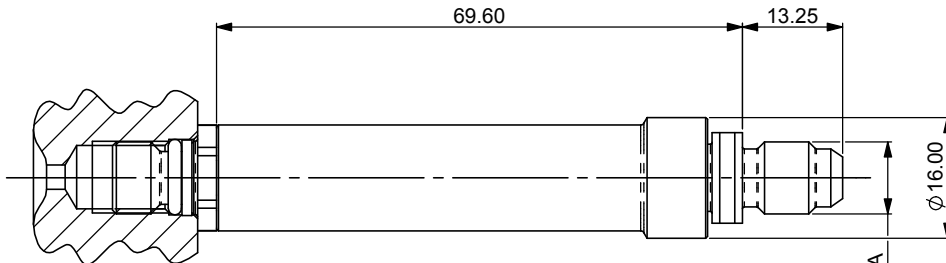
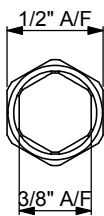
NOTE:
FITTING OF THE DRY-BLEED SYSTEM MAY AFFECT THE RADIAL PROFILE OF THE BRAKE CALIPER. IT IS THEREFORE ESSENTIAL THAT THE CLEARANCE BETWEEN THE CALIPER ASSEMBLY AND WHEEL IS CHECKED CAREFULLY BEFORE ANY CAR IS RUN.

TIGHTENING TORQUES:
CP6300-30/27/21 MALE VALVE - 13Nm
CP6300-32/8/228 VALVE CAP - 4Nm

SEAL KITS AVAILABLE:
CP6300-30RK (TO SUIT CP6300-27 & -30)
CP6300-21RK (TO SUIT CP6300-21)
SEE SHEET 2 FOR MORE DETAILS

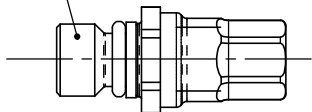
DRY BLEED VALVE	REPLACED BLEEDSCREW
CP6300-21 (M10)	CP4970-125
	CP4970-140
	CP4970-136
CP6300-27 & -30 (3/8")	CP5820-115
	CP6297-112

CHART ABOVE SHOWS PART No. OF THE RELEVANT BLEEDSCREWS THAT THE DRY-BLEED VALVES REPLACE

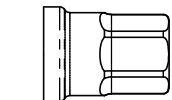


THREAD	C/BORE Ø
M10 x 1.00	Ø11.05/10.95
3/8" x 24 UNF	Ø10.05/9.95

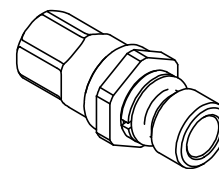
APPLY A 1-2mm DROP OF LOCTITE 270 TO THE 2ND FROM LAST THREAD WHEN FITTING.



CP6300-30 3/8" UNF
CP6300-21 M10x1.0
CP6300-27 3/8" UNF (MALE) DRY-BLEED VALVES (INCLUDING DUST CAP)

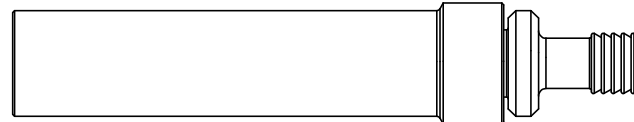


CP6300-328 TITANIUM OR CP6300-228 S/STEEL DRY-BLEED DUST CAP (AVAILABLE SEPARATELY AS SPARES)

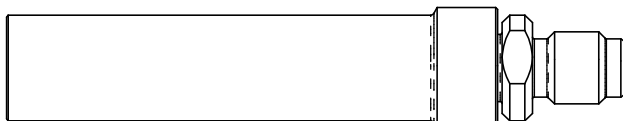


ISOMETRIC VIEW

CP6300-36 SHORT 150° BLEED COUPLING WITH NON-THREADED OUTLET & 1 WAY VALVE FITTED



CP6300-32 BLEED COUPLING WITH NON-THREADED OUTLET & 1 WAY VALVE FITTED



CP6300-31 THREADED BLEED COUPLING

PART NUMBER	PORT THREAD	MATERIAL	WEIGHT
CP6300-21	M10 x 1.00	STAINLESS STEEL	16g
CP6300-27	3/8" x 24 UNF	STAINLESS STEEL	16g
CP6300-30	3/8" x 24 UNF	TITANIUM	8g

NOTE: COUPLINGS ARE ONLY DESIGNED FOR BLEEDING THE CALIPERS AND NOT FOR USE AT HIGH PRESSURE

Issue No.	Alterations		Zone	Initials
	Date & No.	Particulars		
1	28/11/06 B3750	FIRST ISSUE		SAT
2	05/02/07 B3750	CAP TIGHTENING TORQUE ADDED TO NOTES		SAT
3	13/03/07 B4795	SHEET 2 ADDED		SAT
4	04/06/07 B4823	CP6300-27 DETAILS ADDED CP6300-32 DETAILS ADDED		SAT
5	16/10/08 RAC21732	MORE DETAIL ADDED TO LOCTITE NOTE	3C	SAT
6	13/11/08 B5350	TYP DRY BLEED PORT DETAILS ADDED	5E	SAT
7	09/01/09 B5325	CP6300-36, 90° FEMALE ADDED		SAT
8	15/01/09 B5385	CP6300-28 NON O-RING SEAL VERSION ADDED		SAT
9	19/02/09 B5325	CP6300-36 150° FEMALE WAS 90°		SAT
10	20/07/09 B5648	CP6300-37 DETAILS ADDED		SAT
11	26/07/10 B5976	STAGE 3 SPRING RETAINER INSTALLATION NOTE UPDATED ON SHEETS 2 & 4		SAT

SCALE 2:1 SHEET 1 OF 4

DRAWN Steve Thomas

APPROVED

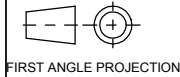
DERIVED FROM

TITLE
DRY BLEED SYSTEM
INSTALLATION DRAWING

DRG NO. CP6300-13CD

A2 INSTALLATION DRAWING

If this document is printed in hardcopy, it is for information use only and therefore is not subject to updating controls. Always refer to viewer for latest issue.



THIS DRAWING IS CONFIDENTIAL AND IS SUPPLIED ON THE EXPRESS CONDITION THAT IT SHALL NOT BE LOANED OR COPIED OR DISCLOSED TO ANY OTHER PERSON OR USED FOR ANY OTHER PURPOSE WITHOUT THE WRITTEN CONSENT OF AP RACING LTD.



AP Racing
Wheler Road
Coventry
CV3 4LB

Tel: +44 024 7663 9595
Fax: +44 024 7663 9559
e-mail: sales@apracings.co.uk
Web site: http://www.apracings.com

© AP Racing Ltd. 2005

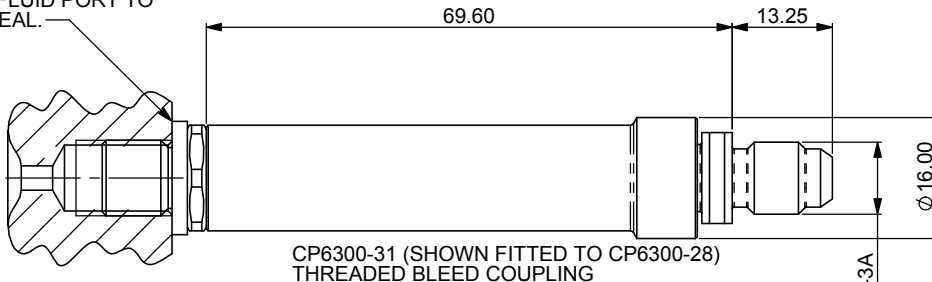
NON O-RING FLUID PORT VERSION

NOTE:
FITTING OF THE DRY-BLEED SYSTEM MAY EFFECT THE RADIAL PROFILE OF THE BRAKE CALIPER. IT IS THEREFORE ESSENTIAL THAT THE CLEARANCE BETWEEN THE CALIPER ASSEMBLY AND WHEEL IS CHECKED CAREFULLY BEFORE ANY CAR IS RUN.

TIGHTENING TORQUES:
CP6300-28 & -37 MALE VALVE - 13Nm
CP6300-228 VALVE CAP - 4Nm

SEAL KITS AVAILABLE:
CP6300-28RK (TO SUIT CP6300-28 & -37)
SEE SHEET 4 FOR MORE DETAILS

CALIPER WILL REQUIRE A MINIMUM Ø16 SPOTFACE AROUND FLUID PORT TO ALLOW GASKET TO SEAL.



DRY BLEED VALVE	REPLACED BLEEDSCREW
CP6300-28 (M10)	3486-268
	CP3720-173
	CP3720-183
	CP3720-107
	CP3894-138
CP6300-37 (3/8")	3486-227
	CP3720-182

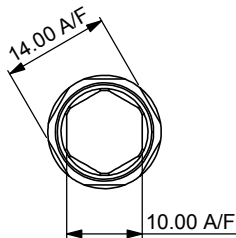
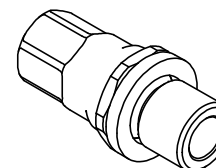
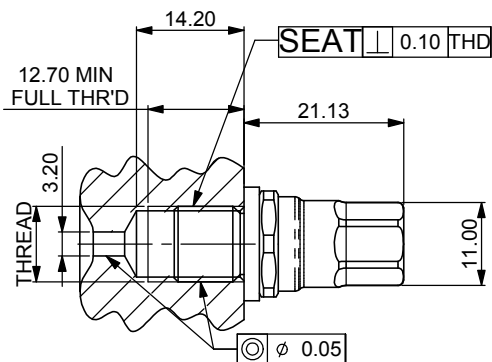
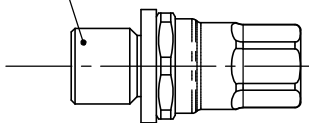


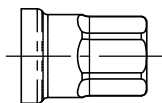
CHART ABOVE SHOWS PART No. OF THE RELEVANT BLEEDSCREWS THAT THE DRY-BLEED VALVES REPLACE



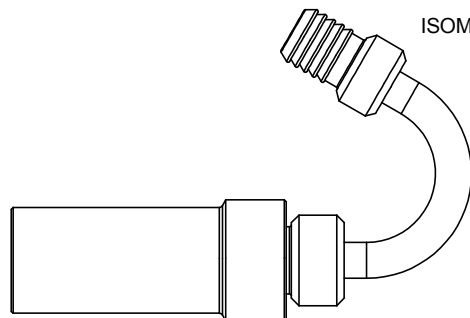
APPLY A 1-2mm DROP OF LOCTITE 270 TO THE 2ND FROM LAST THREAD WHEN FITTING.



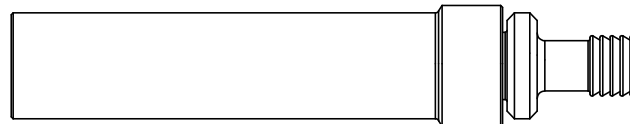
CP6300-28 M10x1.0
CP6300-37 3/8" x 24 UNF (MALE) DRY-BLEED VALVES (INCLUDING DUST CAP)



CP6300-228 S/STEEL DRY-BLEED DUST CAP (AVAILABLE SEPARATELY AS SPARES)



CP6300-36 SHORT 150° BLEED COUPLING WITH NON-THREADED OUTLET & 1 WAY VALVE FITTED



CP6300-32 BLEED COUPLING WITH NON-THREADED OUTLET & 1 WAY VALVE FITTED

PART NUMBER	PORT THREAD	MATERIAL	WEIGHT
CP6300-28	M10 x 1.00 (NON O/RING PORT)	STAINLESS STEEL	17g
CP6300-37	3/8" x 24 UNF (NON O/RING PORT)	STAINLESS STEEL	17g

NOTE: COUPLINGS ARE ONLY DESIGNED FOR BLEEDING THE CALIPERS AND NOT FOR USE AT HIGH PRESSURE

Issue No.	Alterations		Zone	Initials
	Date & No.	Particulars		

SCALE 2:1	SHEET 1 OF 4
DRAWN	Steve Thomas
APPROVED	
DERIVED FROM	
TITLE	
DRY BLEED SYSTEM INSTALLATION DRAWING	
DRG NO.	CP6300-13CD

