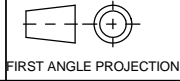


A2 INSTALLATION DRAWING

If this document is printed in hardcopy, it is for information use only and therefore is not subject to updating controls. Always refer to viewer for latest issue.



THIS DRAWING IS CONFIDENTIAL AND IS SUPPLIED ON THE EXPRESS CONDITION THAT IT SHALL NOT BE LOANED OR COPIED OR DISCLOSED TO ANY OTHER PERSON OR USED FOR ANY OTHER PURPOSE WITHOUT THE WRITTEN CONSENT OF AP RACING LTD.

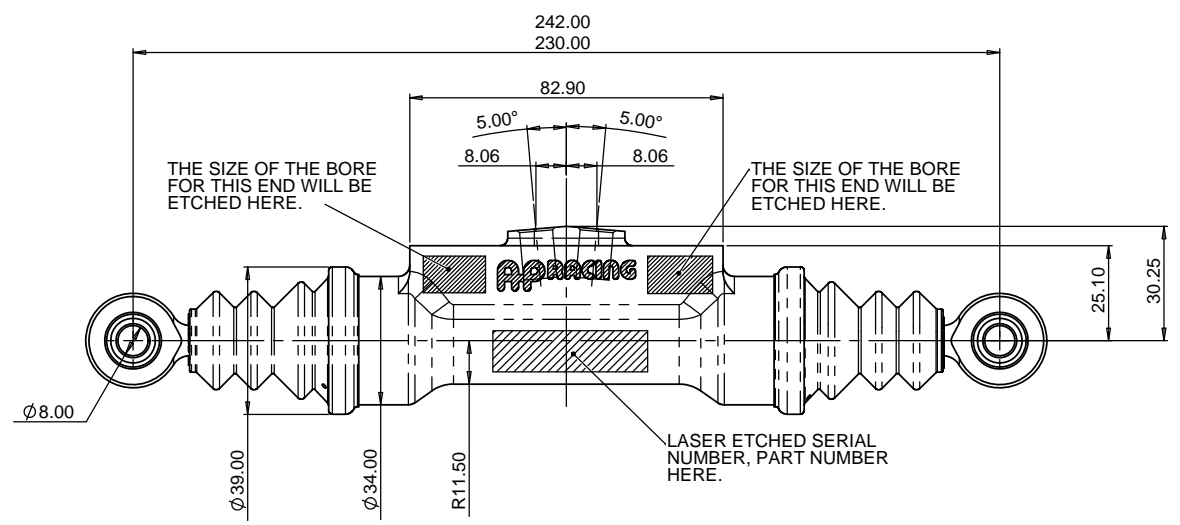
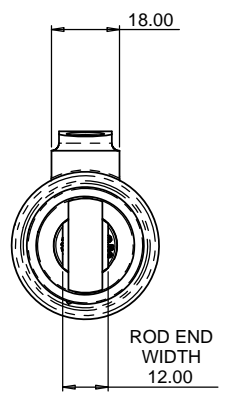


AP Racing
Wheler Road
Coventry
CV3 4LB

Tel: +44 024 7663 9595
Fax: +44 024 7663 9559
e-mail: sales@apracings.com

© AP Racing Ltd. 2005 Web site: http://www.apracings.com

| Issue No. | | Alterations | | Zone | Initials |
|------------|---------------------|---|--|------|----------|
| Date & No. | | Particulars | | | |
| 1 | 08/06/2010 B5864 | FIRST ISSUE | | # | cds |
| 2 | 05/01/2011 B5864 | SHEET 2 ADDED. HAND BRAKE INFO ADDED. | | # | cds |
| 3 | 24/04/2012 B5864 | SHEET 2 UPDATED. PART NUMBER UPDATED CP5540-9091PRMEHB(#) WAS CP5540-9092EHB(#) WAS CP5540-9092PRMEHB(#). CP5540-9191EHB WAS CP5540-9191PRMEHB, CP5540-9192EHB(#) WAS CP5540-9192PRMEHB(#). | | # | cds |
| 4 | 08/08/2012 B6581 | SHEET 1 UPDATED. MARKING DETAILS UPDATED. SHEET 2 UPDATED. GENERAL NOTE CORRECTED. | | # | cds |

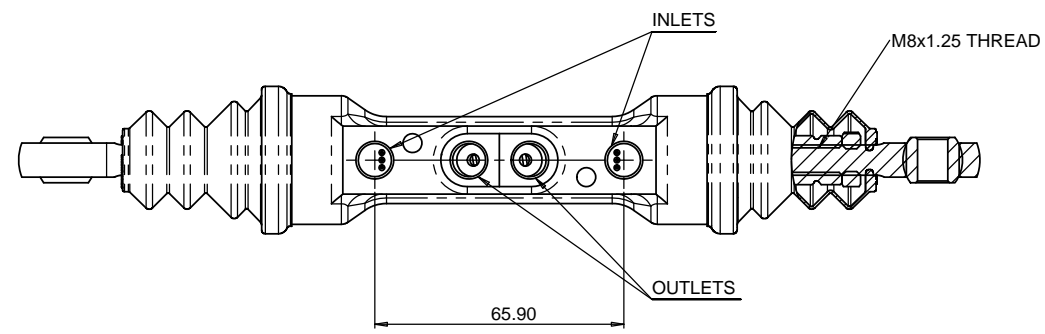


GENERAL DESCRIPTION:-

LIGHT WEIGHT DOUBLE ENDED MASTER CYLINDER, WITH VARIOUS BORE COMBINATIONS.

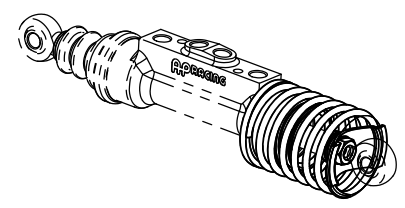
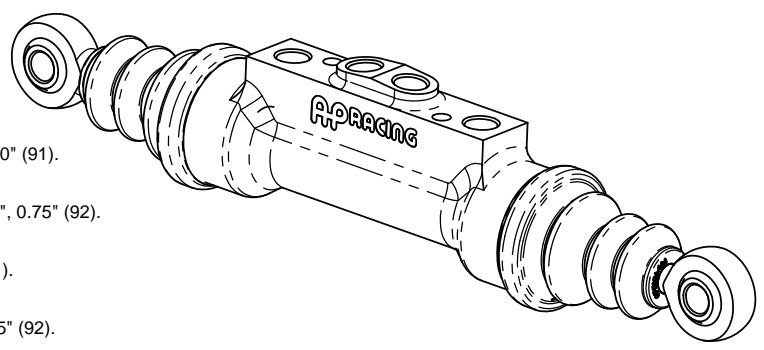
DATA:-

- WEIGHT.....401g (WITH ROD ENDS)
310g (WITHOUT ROD ENDS)
- FULL STROKE 2 x 22.5mm
- TRAVEL TO CUT-OFF
EXTRA SHORT.....0.48 TO 0.63mm
(0.019" TO 0.025")
- HYDRAULIC THREADS.....M10x1.00 INLET
M10x1.00 OUTLET
- BODY MATERIAL.....ALUMINIUM ALLOY



AVAILABLE SIZES:-

- CP5540-9091PRME
THIS CYLINDER HAS 5/8", 0.625 (90) & 0.70" (91).
- CP5540-9092PRME
THIS CYLINDER HAS 5/8", 0.625 (90) & 3/4", 0.75" (92).
- CP5540-9191PRME
THIS CYLINDER HAS 0.70" (91) & 0.70" (91).
- CP5540-9192PRME
THIS CYLINDER HAS 0.70" (91) & 3/4", 0.75" (92).

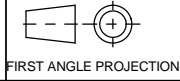


FOR HAND BRAKE VERSIONS SEE SHEET 2

| | |
|---------------------------------------|------------------|
| SCALE 1:1 | SHEET 1 OF 3 |
| DRAWN | Chris Arrowsmith |
| APPROVED | |
| DERIVED FROM | |
| TITLE DOUBLE ENDED MASTER CYLINDER | |
| DRG NO. | CP5540-1CD |

A2 INSTALLATION DRAWING

If this document is printed in hardcopy, it is for information use only and therefore is not subject to updating controls. Always refer to viewer for latest issue.



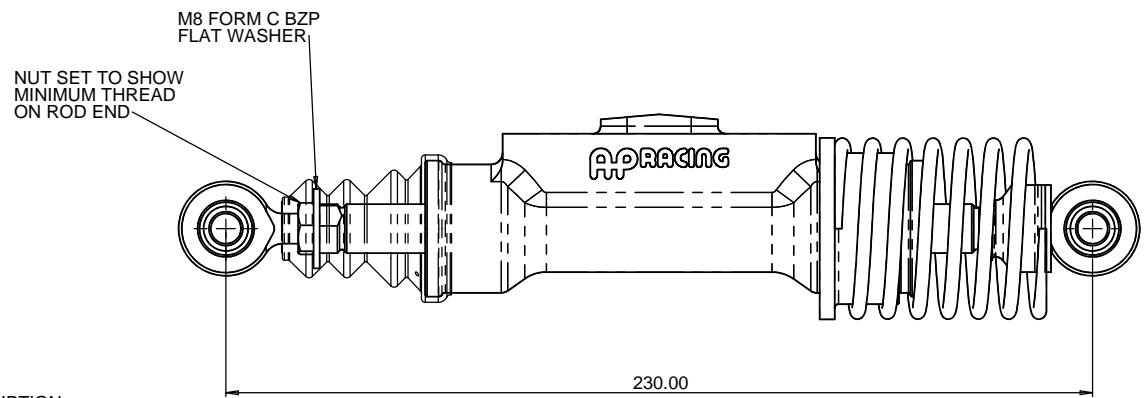
THIS DRAWING IS CONFIDENTIAL AND IS SUPPLIED ON THE EXPRESS CONDITION THAT IT SHALL NOT BE LOANED OR COPIED OR DISCLOSED TO ANY OTHER PERSON OR USED FOR ANY OTHER PURPOSE WITHOUT THE WRITTEN CONSENT OF AP RACING LTD.



AP Racing
Wheler Road
Coventry
CV3 4LB

Tel: +44 024 7663 9595
Fax: +44 024 7663 9559
e-mail: sales@ap racing.co.uk
Web site: http://www.ap racing.com

© AP Racing Ltd. 2005



GENERAL DESCRIPTION:-

HAND BRAKE CYLINDERS ARE FITTED WITH AN ADDITIONAL SPRING TO DELAY THE INCREASE OF PRESSURE TO THAT BORE, THIS IS REQUIRED TO ENSURE THE DIFFERENTIAL IS UNLOCKED PRIOR TO THE REAR BRAKES COMING ON.

AVAILABLE SIZES:-

CP5540-9091EHB(#)
THIS CYLINDER HAS 5/8", 0.625 (90) & 0.70" (91).

CP5540-9092EHB(#)
THIS CYLINDER HAS 5/8", 0.625 (90) & 3/4", 0.75" (92).

CP5540-9191EHB
THIS CYLINDER HAS 0.70" (91) & 0.70" (91).

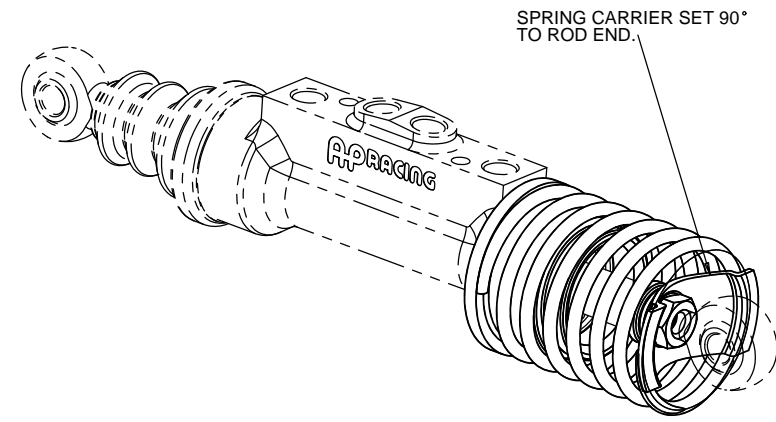
CP5540-9192EHB(#)
THIS CYLINDER HAS 0.70" (91) & 3/4", 0.75" (92).

THE (#) IS AN OPTION AS TO WHICH END YOU WANT THE SPRING TO BE FITTED.

IF YOU REQUIRED THE SPRING TO BE FITTED TO THE SMALL BORE END, REPLACE THE (#) WITH AN 'S'.

IF YOU REQUIRED THE SPRING TO BE FITTED TO THE LARGE BORE END, REPLACE THE (#) WITH AN 'L'.

eg CP5540-9192PRMEHBS
A HAND BRAKE CYLINDER WITH A 0.7" & 0.75" BORES, WITH THE SPRING FITTED TO THE 0.7" END.

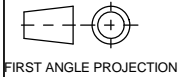


| Issue No. | | Alterations | | Zone | Initials |
|------------|---|------------------------------------|--|------|----------|
| Date & No. | | Particulars | | | |
| - | - | SEE SHEET 1 FOR ISSUE INFORMATION. | | - | - |

| | |
|---------------------------------------|------------------|
| SCALE 1:1 | SHEET 2 OF 3 |
| DRAWN | Chris Arrowsmith |
| APPROVED | |
| DERIVED FROM | |
| TITLE DOUBLE ENDED MASTER CYLINDER | |
| DRG NO. | CP5540-1CD |

A2 INSTALLATION DRAWING

If this document is printed in hardcopy, it is for information use only and therefore is not subject to updating controls. Always refer to viewer for latest issue.



THIS DRAWING IS CONFIDENTIAL AND IS SUPPLIED ON THE EXPRESS CONDITION THAT IT SHALL NOT BE LOANED OR COPIED OR DISCLOSED TO ANY OTHER PERSON OR USED FOR ANY OTHER PURPOSE WITHOUT THE WRITTEN CONSENT OF AP RACING LTD.



AP Racing
Wheler Road
Coventry
CV3 4LB

Tel: +44 024 7663 9595
Fax: +44 024 7663 9559
e-mail: sales@apracing.co.uk

© AP Racing Ltd. 2005

Web site: <http://www.apracing.com>

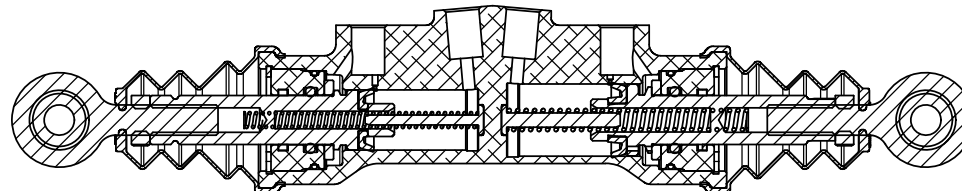
SEAL REPAIR KITS :-

CP5540-9091RK FOR CP5540-9091PRME

CP5540-9092RK FOR CP5540-9092PRME

CP5540-9191RK FOR CP5540-9191PRME

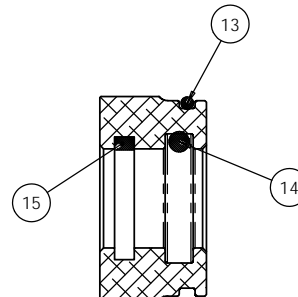
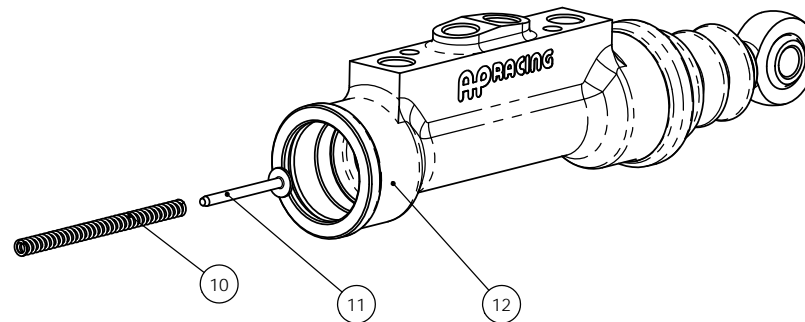
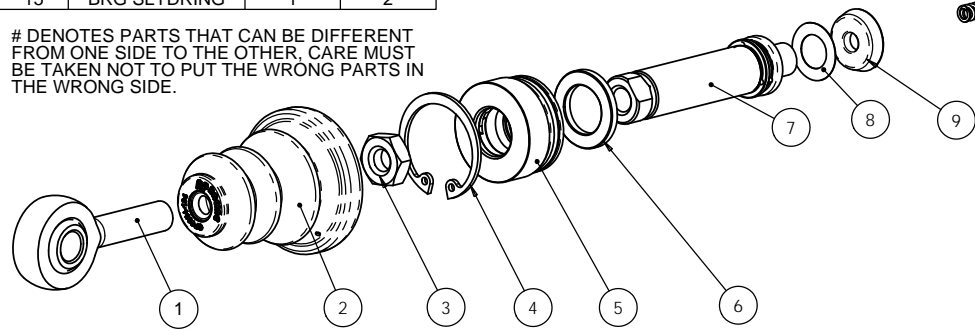
CP5540-9192RK FOR CP5540-9192PRME



RETURN SPRINGS DO NOT SHOW CORRECTLY

| REF | DESCRIPTION | QTY/SIDE | TOTAL QTY |
|-----|---------------|----------|-----------|
| 1 | ROD END | 1 | 2 |
| 2 | RUBBER BOOT | 1 | 2 |
| 3 | LOCK NUT | 1 | 2 |
| 4 | CIRCLIP | 1 | 2 |
| 5 | END CAP | 1 | 2 |
| 6 | CUT-OFF SHIM | 1 | 2 |
| 7 | PISTON | 1 | 2# |
| 8 | PISTON WASHER | 1 | 2# |
| 9 | SEAL | 1 | 2# |
| 10 | RETURN SPRING | 1 | 2# |
| 11 | SPRING GUIDE | 1 | 2# |
| 12 | BODY | 1 | 1 |
| 13 | O RING SEAL | 1 | 2 |
| 14 | O RING SEAL | 1 | 2 |
| 15 | BRG SLYDRING | 1 | 2 |

DENOTES PARTS THAT CAN BE DIFFERENT FROM ONE SIDE TO THE OTHER. CARE MUST BE TAKEN NOT TO PUT THE WRONG PARTS IN THE WRONG SIDE.



| Issue No. | Date & No. | Alterations | | Zone | Initials |
|-----------|------------|-------------|------------------------------------|------|----------|
| | | Particulars | | | |
| - | - | - | SEE SHEET 1 FOR ISSUE INFORMATION. | - | - |

| | |
|---------------------------------------|------------------|
| SCALE 1:1 | SHEET 3 OF 3 |
| DRAWN | Chris Arrowsmith |
| APPROVED | |
| DERIVED FROM | |
| TITLE DOUBLE ENDED MASTER CYLINDER | |
| DRG NO. | CP5540-1CD |