

PART NO. CP2696-38E0

IF THIS DOCUMENT IS PRINTED IN HARDCOPY, IT IS FOR INFORMATION ONLY AND THEREFORE NOT SUBJECT TO UPDATING CONTROLS. ALWAYS REFER TO VIEWSTATION FOR THE LATEST ISSUE.

FIRST ANGLE PROJECTION

DO NOT SCALE

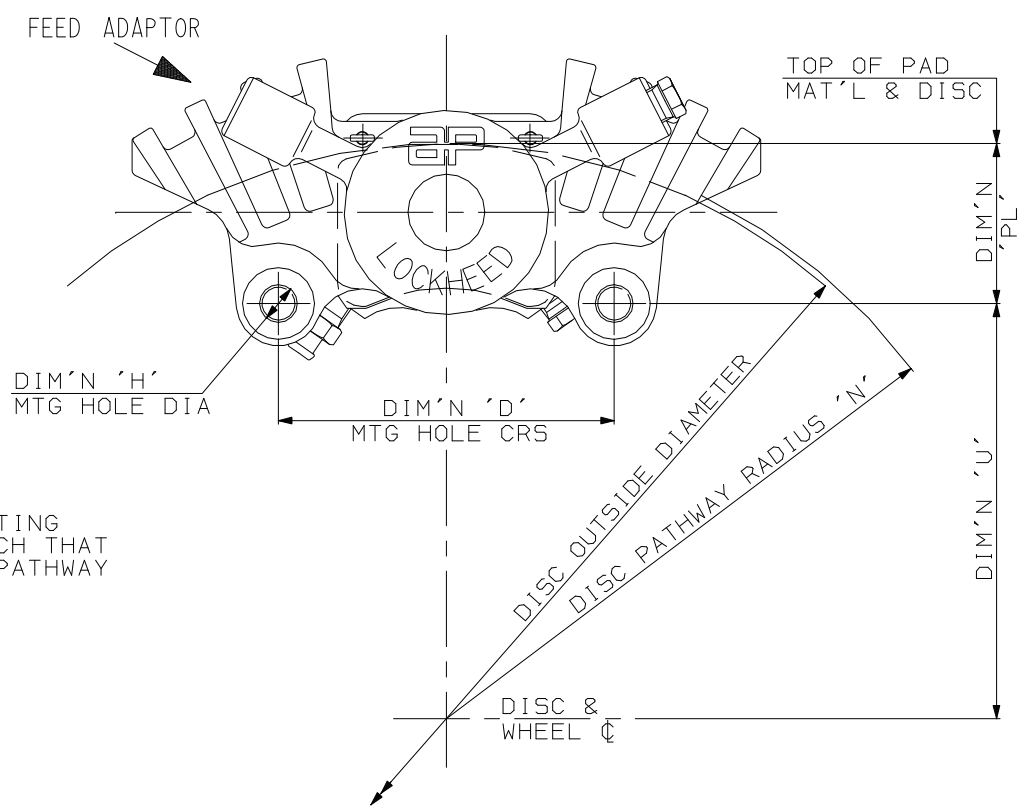
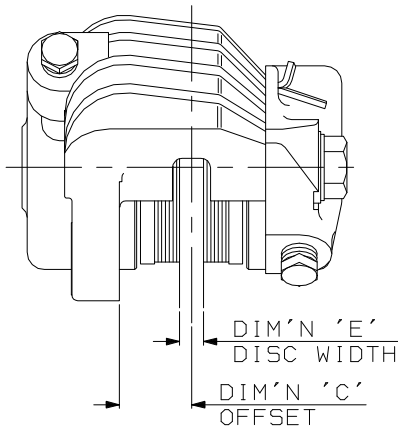
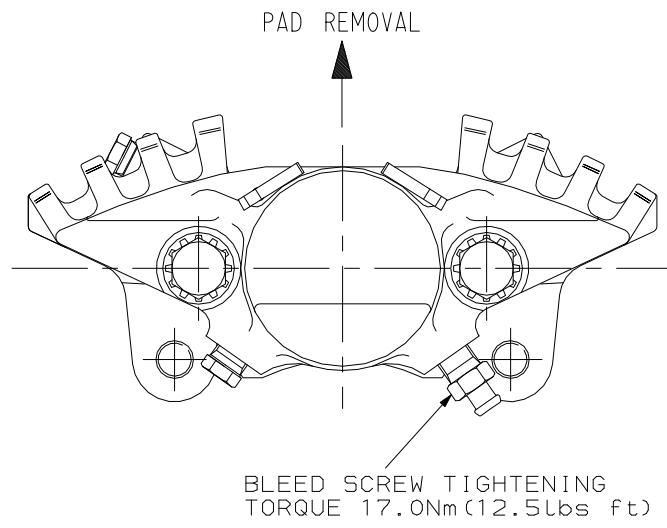
THIS DRAWING IS CONFIDENTIAL AND IS SUPPLIED ON THE EXPRESS CONDITION THAT IT SHALL NOT BE LOANED OR COPIED OR DISCLOSED TO ANY OTHER PERSON OR USED FOR ANY PURPOSE WITHOUT THE WRITTEN CONSENT OF AUTOMOTIVE PRODUCTS p.l.c.

AP AUTOMOTIVE PRODUCTS GROUP YEAR 1997

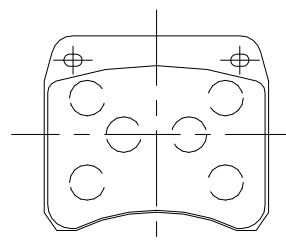
AUTOMOTIVE PRODUCTS p.l.c. AP RACING

NOTE VALUE

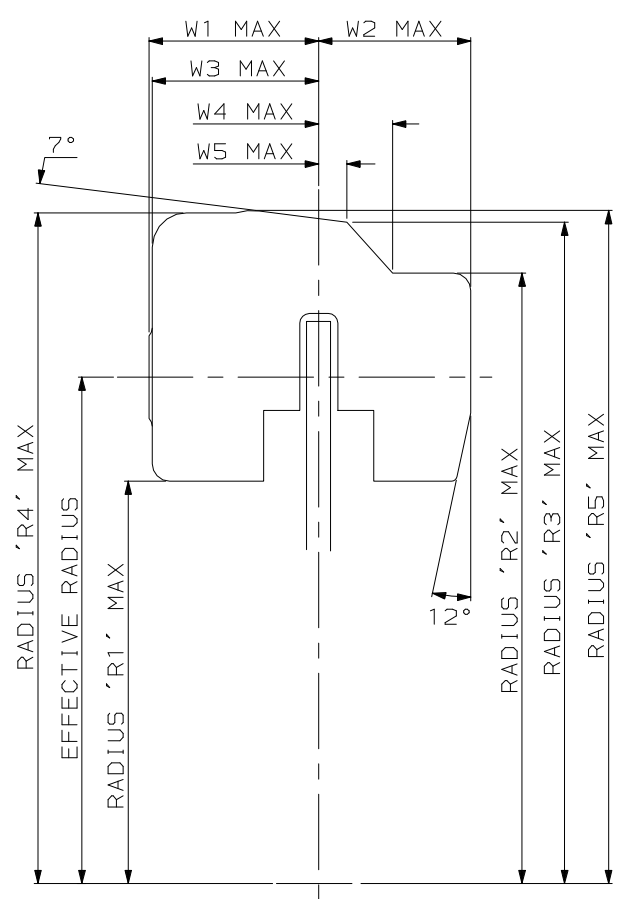
ISSUE NO.	ALTERATIONS		CHKD
	DATE & NO.	PARTICULARS	
1	01/04/97 B1692	FIRST ISSUE	SY
2	07/07/98	BLEED SCREW TORQUE WAS 5.5Nm, NOW 17.0Nm	RB



DISC & CALIPER MOUNTING TOLERANCES TO BE SUCH THAT DISC IS CENTRAL TO PATHWAY TO WITHIN ±0.5MM.

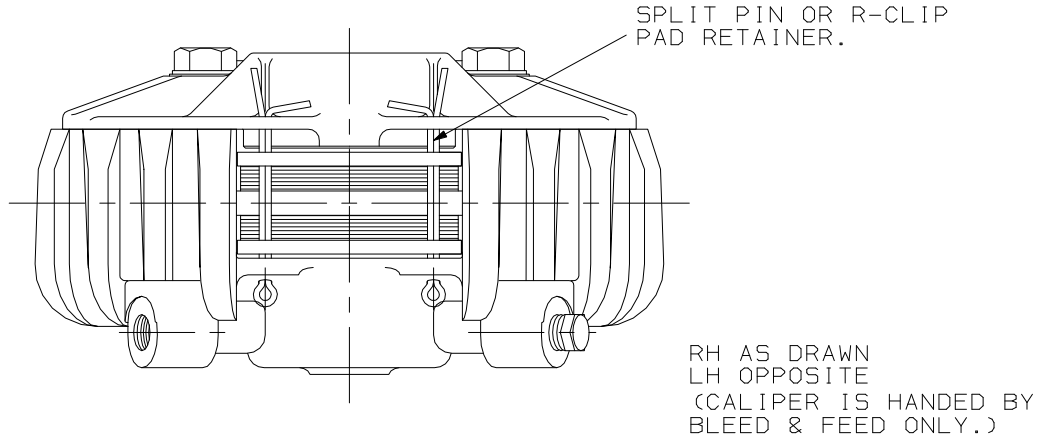


PAD FAMILY - CP2195
 PAD AREA - 22.39 SQ.CM
 PAD VOLUME - 14.84 CU.CM (HIGH PROFILE)



CALIPER RADIAL PROFILE TO SCALE FOR 304.8 DIA. DISC

	DISC Ø	EFF RAD	RAD 1	RAD 2	RAD 3	RAD 4	RAD 5	W 1	W 2	W 3	W 4	W 5
CP2696-38E0	Ø304.8 (12.0")	134.11	106.6	161.7	175.2	177.7	178.3	45.4	40.3	44.1	20.1	8.0



CALIPER ASSY FAMILY No	STROKE No	DISC DIAØ	DISC WIDTH DIM'E	DIMN 'C'	DIMN 'H'	DIMN 'D'	DIMN 'PL'	RAD 'N'	REMARKS & APPLICATIONS
CP2696	38	304.8	6.35	19.11	10.20	88.96	39.88	152.7	

TEST	
UNLESS OTHERWISE STATED:	
DIMENSIONAL TOLERANCES	±0.25
ANGULAR TOLERANCES	±0°30'
MAX SURFACE FINISH:	
BY ANY METHOD	√ = μm (Ra)
ON MACHINED SURFACES	√ = μm (Ra)
WITHOUT MATERIAL REMOVAL	√ = μm (Ra)
DIMENSIONS IN MILLIMETERS.	
DRAWING TO B.S.308.	
THREADS TO B.S.3643 PT2 (MEL110).	
REMOVE BURRS.	
TITLE	
SHEET SIZE	A1
SCALE	1:1
TRANSLATION SHEET NO(S)	
SHEET NO.	TOTAL
1	1 OF 1

MATERIAL	
MATERIAL SPECIFICATION(S)	
TREATMENT	
DRAWN	S. YOUNG
CHECKED	#
RE-DRAWN	CHECKED
GENERATED FROM cp2696-50-1	
TITLE Ø1.625" X2 CALIPER INSTALLATION	
PART NO. CP2696-38E0	
GROUP PART NO. #	

GENERAL DESCRIPTION.
 THIS IS A TWIN OPPOSED BORE CALIPER DESIGNED TO OPERATE ON A SOLID IRON DISC FROM Ø10" (254.0) TO Ø12" (304.8) OF THICKNESS 0.25" (6.35) ONLY. PISTON ANTI-KNOCK BACK SPRINGS ARE NOT FITTED AS STANDARD BUT ARE AVAILABLE ON REQUEST.
TYPICAL APPLICATIONS- SOLOS & SIDECARS
 PISTON DIAMETER 2 X 1.625" (41.28)
 TOTAL PISTON AREA 26.76 SQ.CM (4.148"SQ.)
 BODY MATERIAL ALUMINIUM ALLOY
 ALL HYDRAULIC THREADS 3/8" X 24UNF
 PISTON MATERIAL ALUMINIUM ALLOY (STANDARD) OR STAINLESS STEEL.

DETAILS
 DIMENSION 'PL' TOP OF PAD MATERIAL TO MOUNTING HOLE C.
 DIMENSION 'C' OFFSET - DISC CENTRE LINE TO CALIPER MOUNTING FACE.
 DIMENSION 'D' MOUNTING HOLE CENTRES.
 DIMENSION 'H' MOUNTING HOLE DIAMETER.
 DIMENSION 'U' WHEEL CENTRE TO CALIPER MOUNTING HOLE C.
 (DISC DIAMETER/2) - 'PL' DIMENSION
 RADIUS 'N' RADIUS OF DISC PATHWAY
 EFFECTIVE RAD. RAD FROM WHEEL C TO NOM PISTON C

AP RACING TECHNICAL SECTION WILL BE PLEASED TO ADVISE ON THE MOST SUITABLE EQUIPMENT FOR ANY PARTICULAR APPLICATION.

SHOULD PISTONS BE INADVERTANTLY REMOVED, THEY SHOULD BE WIPED CLEAN AND SMEARED WITH AP RACING BRAKE FLUID BEFORE REPLACEMENT.
 THE CORRECT PAD FAMILY NUMBER FOR THIS CALIPER IS CP2195. PADS SHOULD BE ORDERED SEPARATELY. A WIDE VARIETY OF MATERIALS ARE AVAILABLE, PLEASE CONTACT A.P. RACING FOR ADVICE.
 EXAMPLE PART NUMBER - CP2696-38E0