

A1 INSTALLATION DRAWING

IF THIS DOCUMENT IS PRINTED IN HARD COPY,
IT IS FOR INFORMATION USE ONLY AND THEREFORE
IS NOT SUBJECT TO UPDATING CONTROLS. ALWAYS
REFER TO SOLIDWORKS VIEWER FOR LATEST ISSUE



THIS DRAWING IS CONFIDENTIAL AND IS SUPPLIED ON THE EXPRESS CONDITION THAT
IT SHALL NOT BE LOANED OR COPIED OR DISCLOSED TO ANY OTHER PERSON OR USED
FOR ANY OTHER PURPOSE WITHOUT THE WRITTEN CONSENT OF AP RACING LTD.



AP Racing
Wheler Road
Coventry
CV3 4LB
Tel: +44 024 7663 9595
Fax: +44 024 7663 9559
e-mail: sales@apracings.co.uk
Web site: HTTP://www.apracings.com

© AP Racing Ltd. 2005

Issue Date & No. Particulars Zone Initials

1 05/01/06 B4436 FIRST ISSUE # DRA

2 28/06/06 B4567 DIMENSIONS ADDED TO SECTION Y-Y # CDA

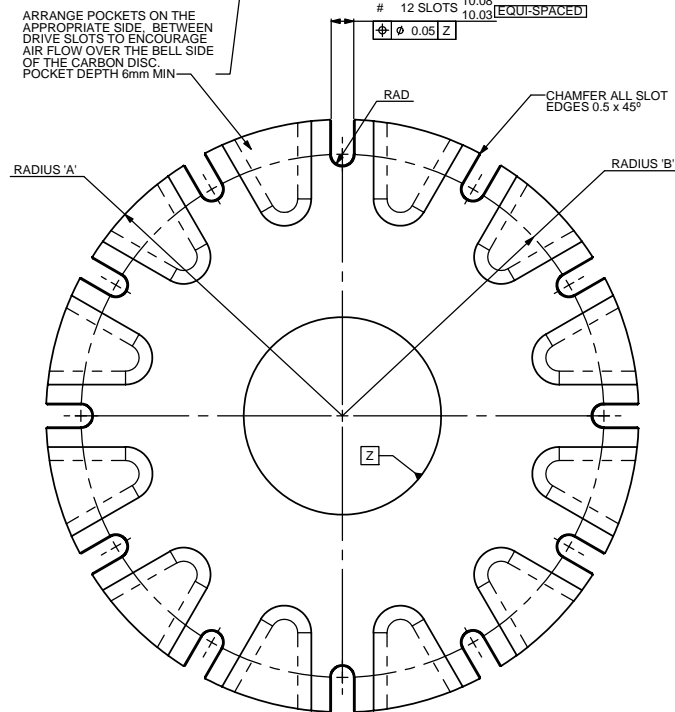
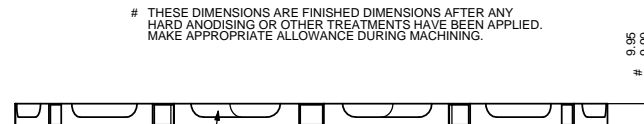
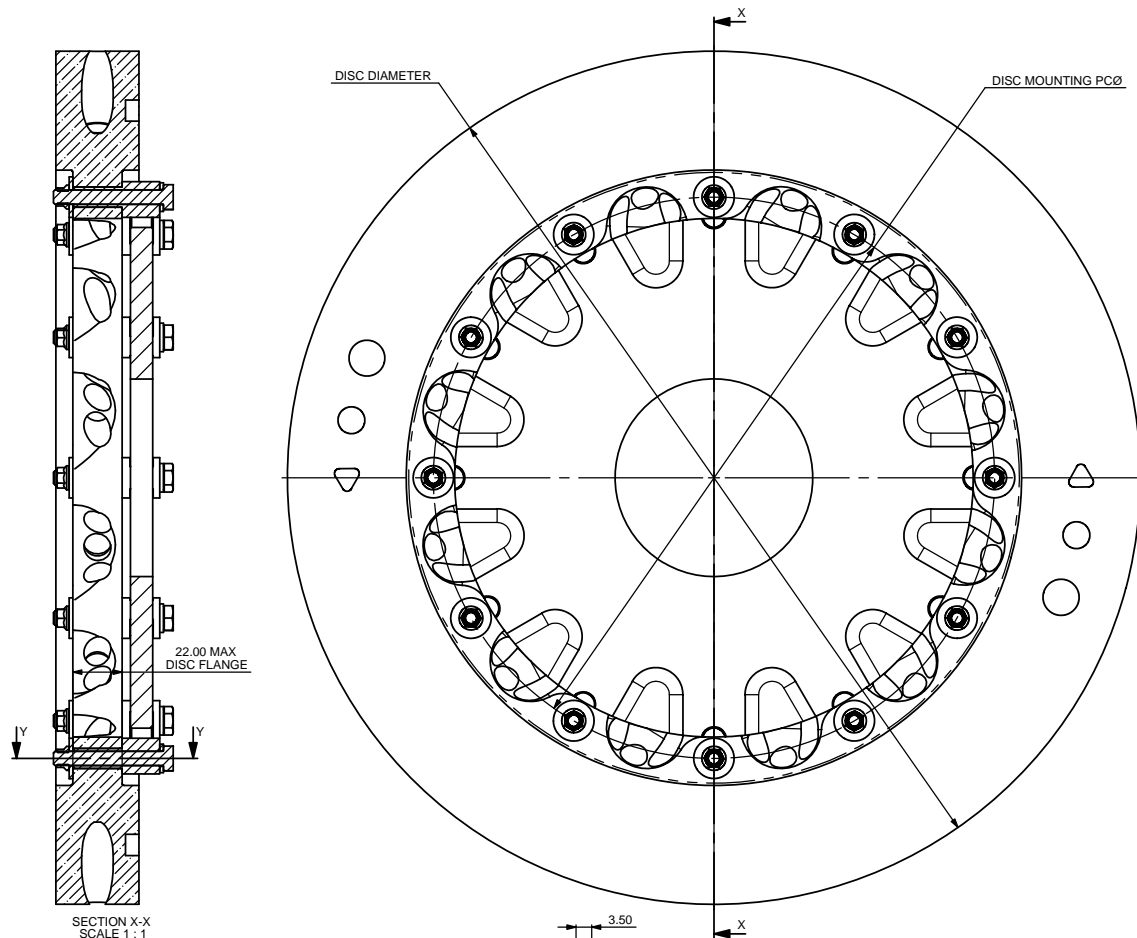
3 11/09/08 B5278 SHEET 2 ADDED # SAT

4 13/09/10 B5466 BOLTLESS BOBBIN INSTALLATION ADDED # SAT

5 18/11/10 DISC FLANGE DIM 22.00 MAX ADDED TO SHT 1 & 2 SHT2 WEIGHT SAVING '564g' WAS 'OVER 500g' # SAT

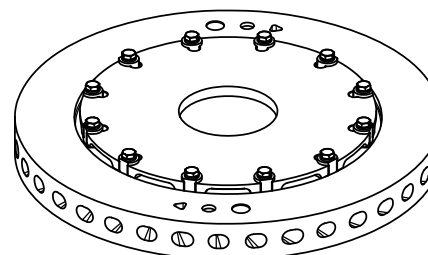
6 21/04/17 B7754_01 CP6390-123CR3 WASHER ADDED BOLT ORIENTATION REVERSED B2 C6 DW

7 12/07/17 B7754_03 BOLTLESS BOBBIN SHEET 2 REMOVED # DW



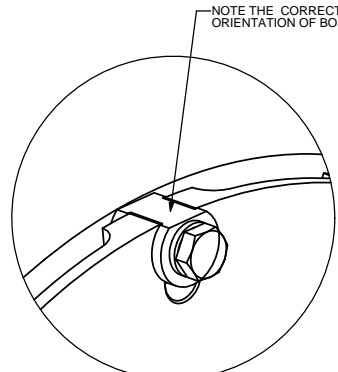
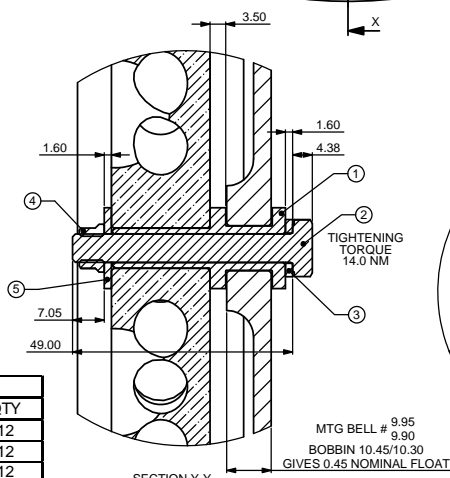
DETAIL SHOWING CRITICAL BELL DIMENSIONS TO SUIT AP RACING
BOBBINS SUPPLIED IN DISC/BELL MOUNTING KIT CP2494-43.
ALL OTHER DIMENSIONS ARE AT THE DISCRETION OF THE CUSTOMER

BELL DATA			
DISC Ø	DISC MOUNTING PCØ	RADIUS 'A'	RADIUS 'B'
380.0	250.0	132.0 ± 0.15	116.5 ± 0.15
355.0			
340.0	225.0	119.5 ± 0.15	104.0 ± 0.15



INSTALLATION NOTE:
ENSURE LARGE WASHER ⑤ IS INSTALLED UNDER NUT
AND SMALL WASHER ③ IS INSTALLED UNDER BOLT
HEAD AS SHOWN.

NUT ④ TO BE INSTALLED INBOARD AS SHOWN IN
SECTION X-X



MTG BELL # 9.95
BOBBIN 10.45/10.30
GIVES 0.45 NOMINAL FLOAT

DISC/BELL MOUNTING KIT CP2494-43			
REF No.	DESCRIPTION	PART No.	QTY
1	BOBBIN	CP2494-734	12
2	1/4" UNF BOLT	CP2494-746	12
3	Ø12.70 WASHER	CP2494-747	12
4	NUT (HIGH TEMP)	CP2494-748	12
5	Ø18.00 WASHER	CP5390-123CR3	12

SCALE 2:1 SHEET 1 OF 2

DRAWN D.A. ARROWSMITH

APPROVED

DERIVED FROM

TITLE

GT CARBON DISC

INSTALLATION DRAWING

DRG NO. CP2872-1000CD

A1

INSTALLATION
DRAWING

IF THIS DOCUMENT IS PRINTED IN HARDCOPY,
IT IS FOR INFORMATION USE ONLY AND THEREFORE
IS NOT SUBJECT TO UPDATING CONTROLS. ALWAYS
REFER TO SOLIDWORKS VIEWER FOR LATEST ISSUE

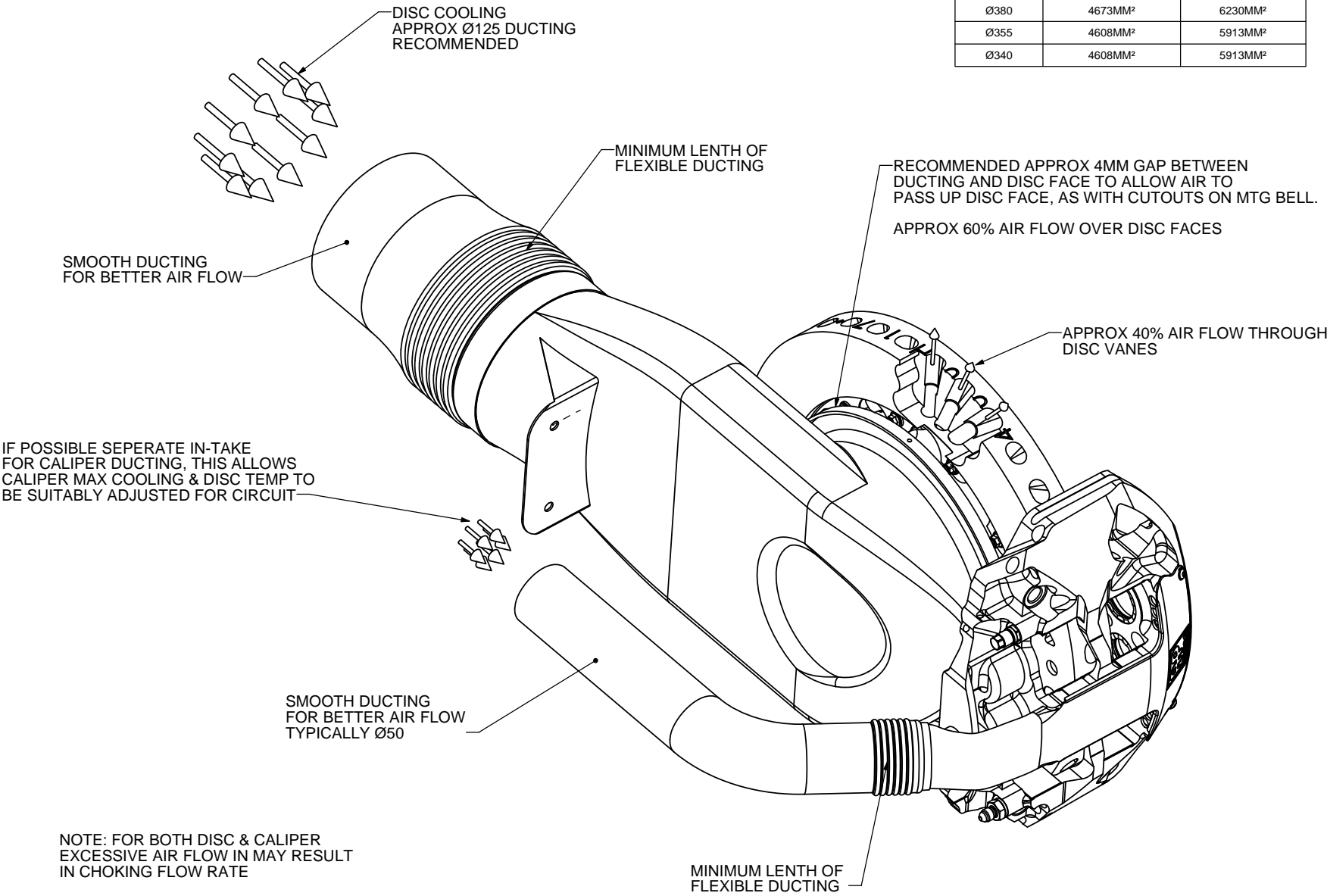
FIRST ANGLE
PROJECTION

THIS DRAWING IS CONFIDENTIAL AND IS SUPPLIED ON THE EXPRESS CONDITION THAT
IT SHALL NOT BE LOANED OR COPIED OR DISCLOSED TO ANY OTHER PERSON OR USED
FOR ANY OTHER PURPOSE WITHOUT THE WRITTEN CONSENT OF AP RACING LTD.

AP Racing
Wheler Road
Coventry
CV3 4LB
Tel: +44 (0) 24 7663 9595
Fax: +44 (0) 24 7663 9559
e-mail: engineering@apracings.co.uk
Web site: <http://www.apracings.com>
© AP Racing Ltd. 2005

EXAMPLE OF DISC AND CALIPER DUCTING

DISC DIA	MINIMUM CROSS SECTION THROUGH DISC VANES	MINIMUM CROSS SECTION DISC FACES
Ø380	4673MM ²	6230MM ²
Ø355	4608MM ²	5913MM ²
Ø340	4608MM ²	5913MM ²



Issue No.	Alterations		Zone	Initials
	Date & No.	Particulars		
		SEE SHEET 1 FOR DETAILS		

SCALE 2:3

SHEET 2 OF 2

DRAWN D.ARROWSMITH

APPROVED

DERIVED FROM

TITLE
GT CARBON DISC
INSTALLATION DRAWING

DRG NO. CP2872-1000CD