

# A3 INSTALLATION DRAWING

If this document is printed in hardcopy, it is for information only and therefore is not subject to updating controls. Always refer to viewer for latest issue

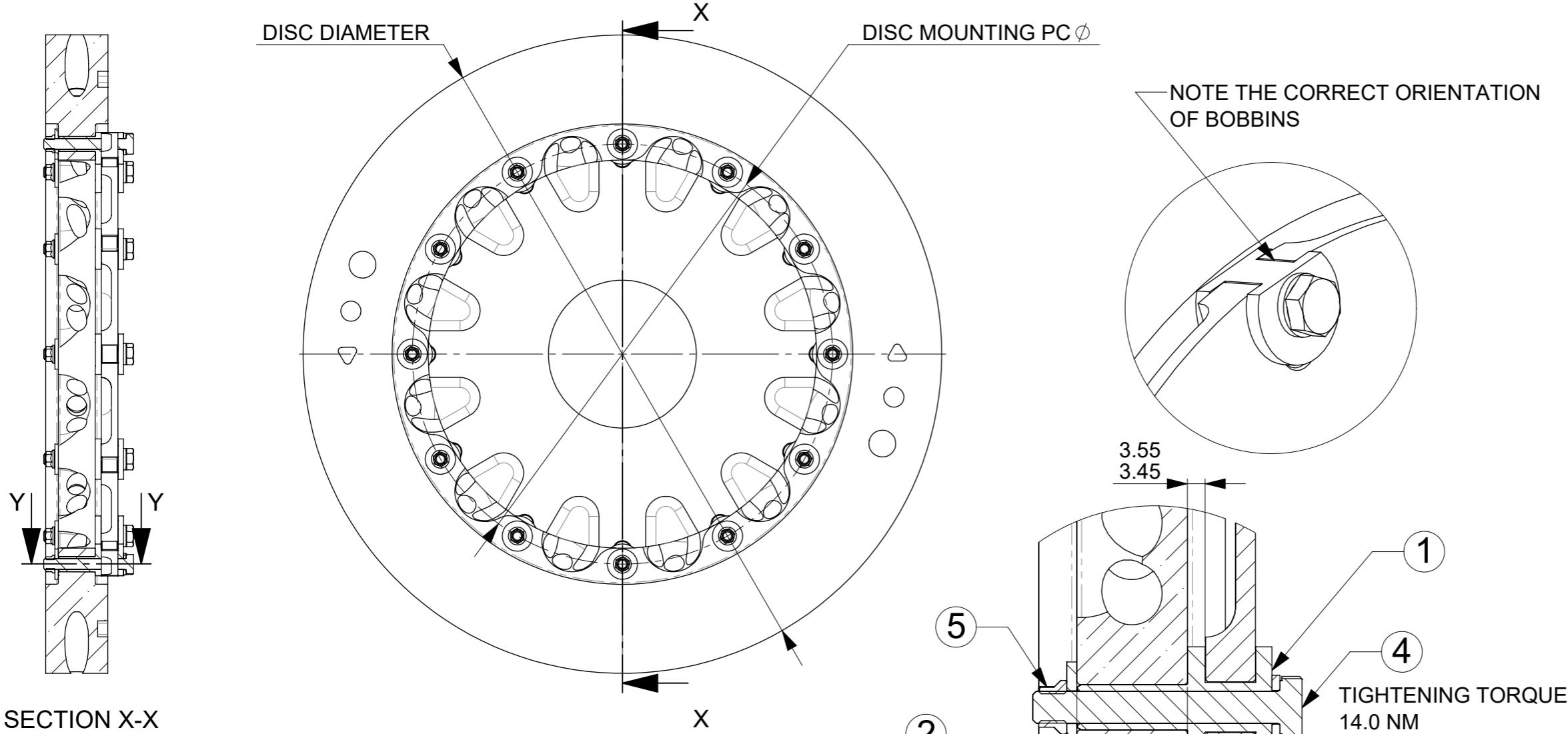


THIS DRAWING IS CONFIDENTIAL AND IS SUPPLIED ON THE EXPRESS CONDITION THAT IT SHALL NOT BE LOANED OR COPIED OR DISCLOSED TO ANY OTHER PERSON OR USED FOR ANY OTHER PURPOSE WITHOUT THE WRITTEN CONSENT OF AP RACING LTD.



AP Racing  
Wheler Road  
Coventry  
CV3 4LB  
Tel: +44 024 7663 9595  
Fax: +44 024 7663 9559  
e-mail: engineering@ap racing.co.uk  
web-site: HTTP://www.ap racing.com

Issue No.	Alterations		Zone #	Initials
	Date & No.	Particulars		
1A	26/03/24 B8570	FIRST ISSUE		HMB



**INSTALLATION NOTE:**  
ENSURE LARGE WASHER (2) IS INSTALLED UNDER NUT AND SMALL WASHER (3) IS INSTALLED UNDER BOLT HEAD AS SHOWN.

NUT (5) TO BE INSTALLED INBOARD AS SHOWN IN SECTION X-X

DISC/BELL MOUNTING KIT CP2494-89			
REF No.	DESCRIPTION	PART No.	QTY/KIT
1	BOBBIN	CP2494-1644	12
2	Ø18.0, 2.0 THICK WASHER	CP2494-2687	12
3	Ø12.7, 1.6 THICK WASHER	CP2494-747	12
4	1/4" UNF BOLT 49.0 LONG	CP2494-746	12
5	NUT (HIGH TEMP)	CP2494-748	12

22 MAX DISC FLANGE      MTG BELL # DIM 'L'

SECTION Y-Y  
SCALE 1 : 1

BELL FLOAT VARIATION			
MOUNTING BELL THICKNESS 'L'	BOBBIN PART No. CP2494	BOBBIN SLOT GAP	NOM FLOAT.
9.95/9.90	-1644	10.07/10.02	0.125
9.62/9.57			0.45

**NOTE:** FOR DISC Ø < 340.0, THE Ø18.0 WASHER CAN BE INVERTED WITH Ø12.7 WASHER IN THE EVENT OF A CLASH WITH THE DISC

SCALE 1:3		SHEET 1 OF 2	
DRAWN	Harry Blanford		
APPROVED			
DERIVED FROM			
<b>TITLE</b>			
DISC/BELL MOUNTING KIT CP2494-89 INSTALLATION DRAWING			
Drg No.	CP2494-89cd		

# A3 INSTALLATION DRAWING

If this document is printed in hardcopy, it is for information only and therefore is not subject to updating controls. Always refer to viewer for latest issue

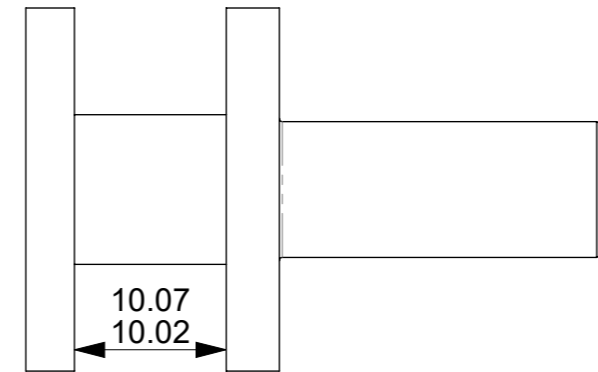
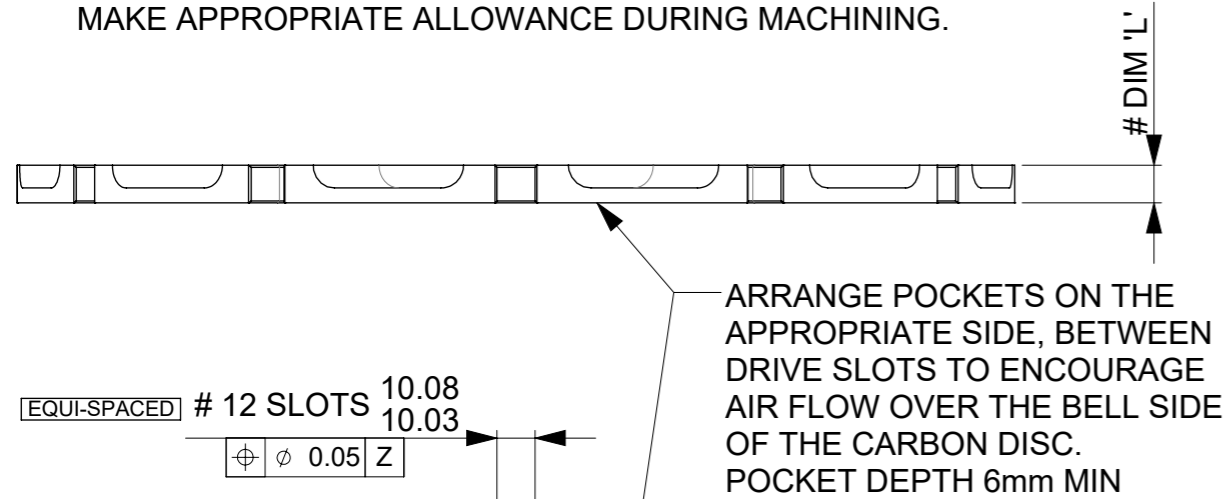


THIS DRAWING IS CONFIDENTIAL AND IS SUPPLIED ON THE EXPRESS CONDITION THAT IT SHALL NOT BE LOANED OR COPIED OR DISCLOSED TO ANY OTHER PERSON OR USED FOR ANY OTHER PURPOSE WITHOUT THE WRITTEN CONSENT OF AP RACING LTD.



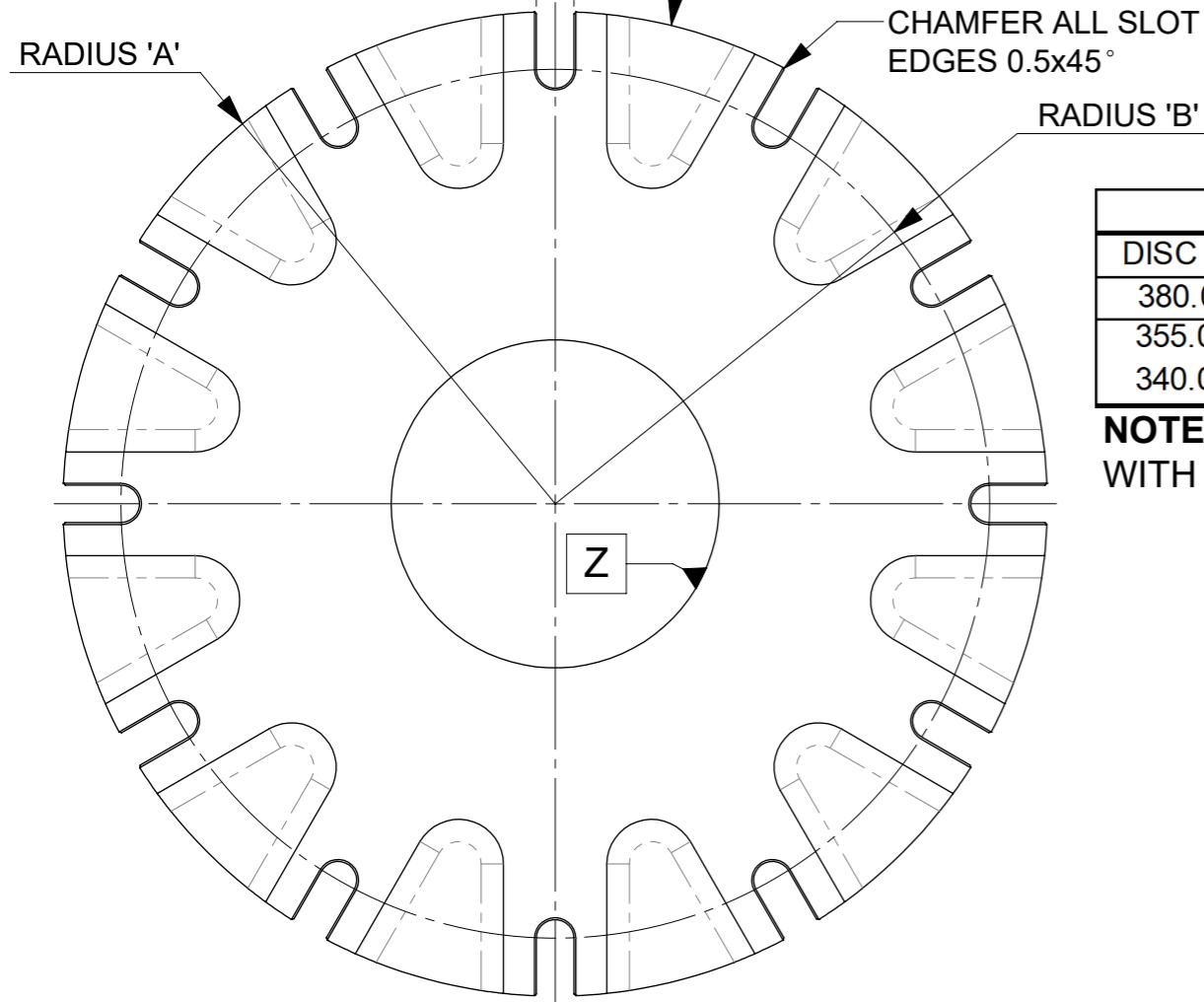
AP Racing  
Wheler Road  
Coventry  
CV3 4LB  
Tel: +44 024 7663 9595  
Fax: +44 024 7663 9559  
e-mail: [engineering@ap racing.co.uk](mailto:engineering@ap racing.co.uk)  
web-site: [HTTP://www.ap racing.com](http://www.ap racing.com)

# THESE DIMENSIONS ARE FINISHED DIMENSIONS AFTER ANY HARD ANODISING OR OTHER TREATMENTS HAVE BEEN APPLIED. MAKE APPROPRIATE ALLOWANCE DURING MACHINING.



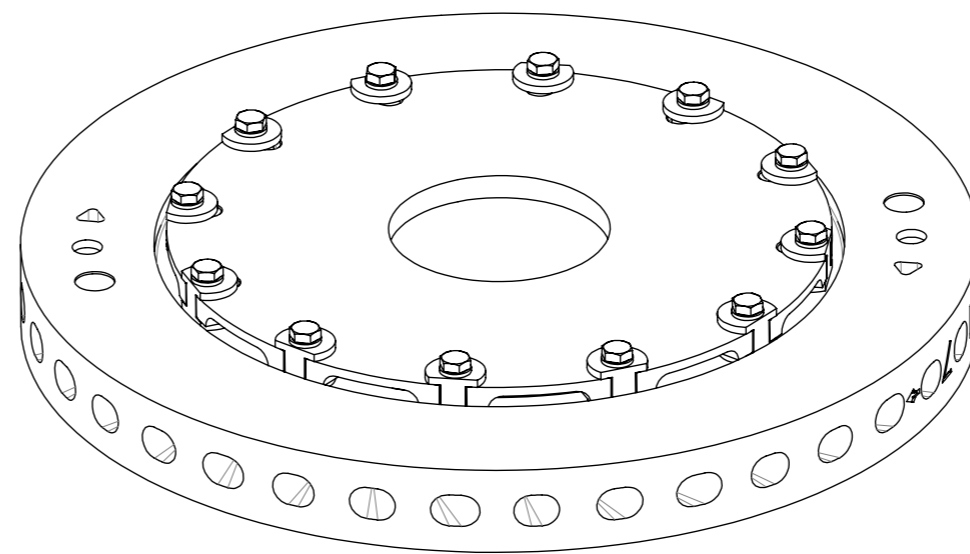
CP2494-1644 SLOT DIMENSIONS

BELL FLOAT VARIATION			
MOUNTING BELL THICKNESS 'L'	BOBBIN PART No. CP2494	BOBBIN SLOT GAP	NOM FLOAT.
9.95/9.90	-1644	10.07/10.02	0.125
9.62/9.57	-1644	10.07/10.02	0.45



BELL DATA				
DISC Ø	DISC MOUNTING PCØ	RADIUS 'A'	RADIUS 'B'	RECOMMENDED KIT
380.0	250.0	132.0 ± 0.15	116.5 ± 0.15	CP2494-89
355.0	225.0	119.5 ± 0.15	104.0 ± 0.15	CP2494-89
340.0				

**NOTE:** FOR DISC Ø < 340.0, THE Ø18.0 WASHER CAN BE INVERTED WITH Ø12.7 WASHER IN THE EVENT OF A CLASH WITH THE DISC



DETAIL SHOWING CRITICAL BELL DIMENSIONS TO SUIT AP RACING BOBBINS SUPPLIED IN DISC/BELL MOUNTING KIT CP2494-89. ALL OTHER DIMENSIONS ARE AT THE DISCRETION OF THE CUSTOMER

Issue No.	Alterations		Zone	Initials
	Date & No.	Particulars		
-	-	SEE SHEET 1 FOR ISSUE INFORMATION.	-	-

SCALE 1:3		SHEET 2 OF 2	
DRAWN	Harry Blanford		
APPROVED			
DERIVED FROM			
<b>TITLE</b>			
DISC/BELL MOUNTING KIT CP2494-89 INSTALLATION DRAWING			
Drg No.	CP2494-89cd		