

B1 INSTALLATION DRAWING

IF THIS DOCUMENT IS PRINTED IN HARDCOPY, IT IS FOR INFORMATION USE ONLY AND THEREFORE IS NOT SUBJECT TO UPDATING CONTROLS. ALWAYS REFER TO SOLIDWORKS VIEWER FOR LATEST ISSUE



THIS DRAWING IS CONFIDENTIAL AND IS SUPPLIED ON THE EXPRESS CONDITION THAT IT SHALL NOT BE LOANED OR COPIED OR DISCLOSED TO ANY OTHER PERSON OR USED FOR ANY OTHER PURPOSE WITHOUT THE WRITTEN CONSENT OF AP RACING LTD.

AP RACING
 AP Racing
 Wheler Road
 Coventry
 CV3 4LB
 Tel: +44 024 7663 9595
 Fax: +44 024 7663 9559
 e-mail: sales@apracing.co.uk
 Web site: HTTP://www.apracing.com

CP7480-2 / 3S7L SPECIFICATION

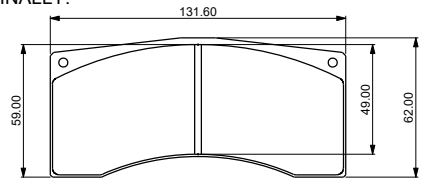
GENERAL DESCRIPTION
 4 PISTON DIFFERENTIAL BORE CALIPER TO SUIT UP TO Ø370x32mm IRON DISC WITH A FIXED BRIDGE DESIGN.
TYPICAL APPLICATION - GT

CALIPER SPECIFICATION	
BORE SIZE	DH (28.58 x 36.00) (1.125" x 1.417")
PISTON AREA (TOTAL)	33.19cm ²
DISC DIAMETER MAX	370.00
DISC THICKNESS MAX	32.00
DISC THICKNESS MIN	31.00 (DIFFERENTIAL WEAR NOT TO EXCEED 0.5mm SIDE TO SIDE)
PAD FAMILY	CP6070D49
PAD THICKNESS MAX	25.00
PAD THICKNESS MIN	4.70
MIN STACK	41.00
HYDRAULIC FEED	M10x1.0 15.0 THREAD DEPTH
DRY WEIGHT (WITHOUT PADS)	2.17 kg
EFFECTIVE RADIUS (ON Ø370 DISC)	160.50
EFFECTIVE RADIUS (ON Ø355 DISC)	153.00
'PL' DIMENSION (TOP OF PAD FRICTION MATERIAL TO CALIPER MOUNTING FACE)	63.50
'C' DIMENSION (CALIPER OFFSET)	42.00
'U' DIMENSION (UPRIGHT MOUNTING)	121.5 U = (DISC Ø/2) - PL
TIGHTENING TORQUES	BLEED SCREW: 17Nm PAD LEDGE SCREWS: 4Nm TYPICAL M12 MOUNTING BOLT: 65Nm (GUIDANCE ONLY)

CALIPER POSITIONING	
RH	RIGHT HAND LEADING OR TRAILING
LH	LEFT HAND LEADING OR TRAILING

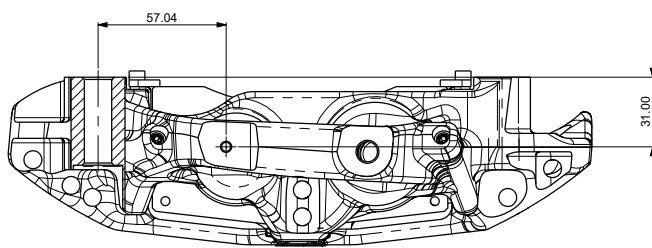
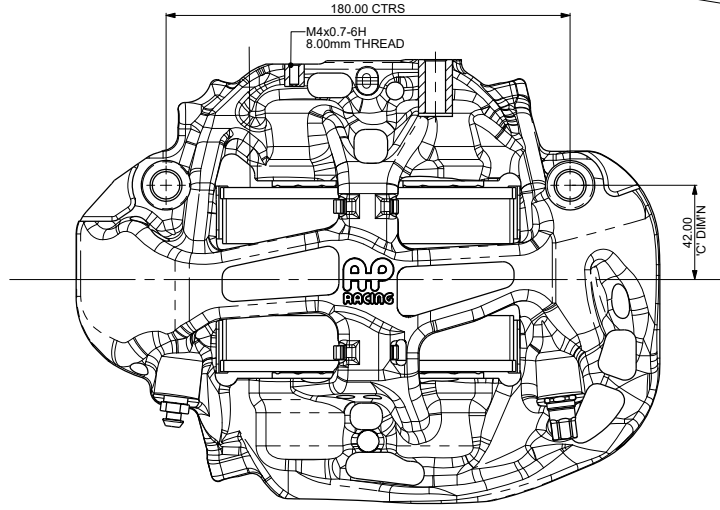
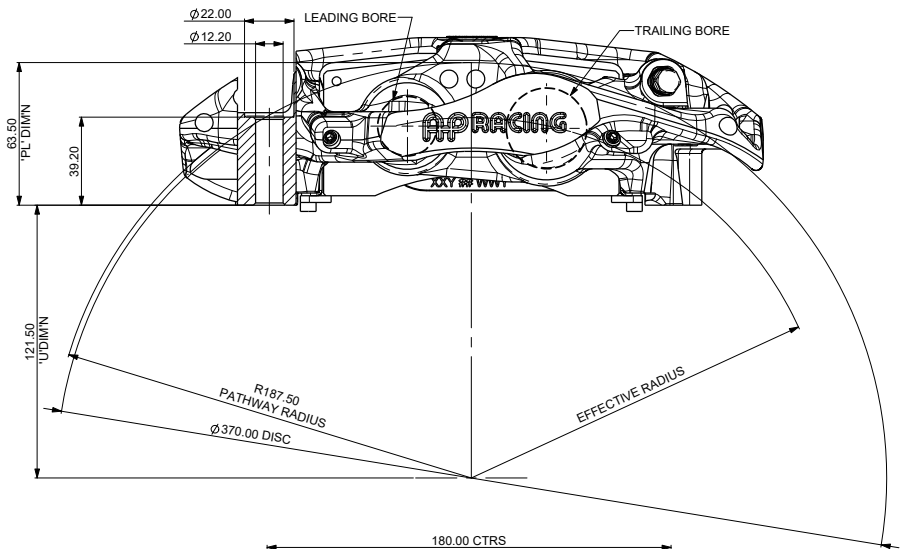
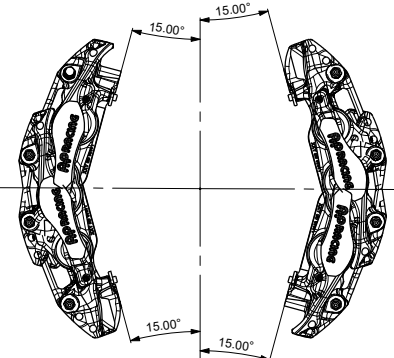
PART NUMBERING CONVENTION	
PART NUMBER	DESCRIPTION
CP7480-2S7L	RH - SIDE FEED - 7lb AKB SPRING - STAINLESS PISTONS
CP7480-3S7L	LH - SIDE FEED - 7lb AKB SPRING - STAINLESS PISTONS
CP7480-2S7M	RH - SIDE FEED - 7lb AKB SPRING - TITANIUM PISTONS
CP7480-3S7M	LH - SIDE FEED - 7lb AKB SPRING - TITANIUM PISTONS

INSTALLATION INFORMATION
 THE CALIPER IS DESIGNED SO THAT THE DISC WILL BE MOUNTED CENTRALLY WITHIN A TOLERANCE OF ±0.50mm. THE CALIPER IS TO BE MOUNTED ±15° FROM THE VERTICAL. THE DIAMETRICAL CLEARANCE BETWEEN THE DISC OUTSIDE DIAMETER AND THE PATHWAY SHOULD BE 2.50mm NOMINALLY.



CP6070D49	
PAD AREA	SLOTTED - 61.64cm ² FULL AREA - 63.11cm ²

OPTIMUM BLEED POSITION
 FOR OPTIMUM BLEED, THE CALIPER SHOULD BE INSTALLED IN THE LEADING OR TRAILING POSITION ±15° FROM THE VERTICAL AS SHOWN.



Issue No.	Alterations			Zone	Initials
	Date & No.	Particulars	#		
01	29/01/20 87936	FIRST ISSUE			SCY
02	19/02/2020 87824_13	SHEET 1 HYDRAULIC INLET TORQUE WAS 29Nm NOW 15Nm AND REMOVED FROM TABLE AND ADDED TO SHEET 2 AS A NOTE. SHEET 2 SHEET 2 MERGED WITH SHEET 3			THS
03	14/12/2020 87824_17	SHEET 2 H-BORE PISTON NOW CP7480-109 H-BORE PISTON NOW CP7480-110			THS
04	16/08/2021 88305_02	CALIPER BODY UPDATE AND NEW PISTON CONFIGURATION SHEET 1 CALIPER SPEC TABLE UPDATED M4 THREAD DIM ADDED SHEET 2 SPARE PART TABLE UPDATED TO INCLUDE TITANIUM PISTONS			ADM J14

SCALE 1:1	SHEET 1 OF 2
DRAWN	SHAUN YOUNG
APPROVED	
DERIVED FROM	
TITLE 4 PISTON GT BRAKE CALIPER Ø370 x 32 DISC & D49 PAD	
DRG NO.	CP7480-1CD

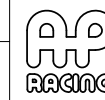
B1 INSTALLATION DRAWING

IF THIS DOCUMENT IS PRINTED IN HARD COPY, IT IS FOR INFORMATION USE ONLY AND THEREFORE NOT SUBJECT TO UPDATING CONTROLS. ALWAYS REFER TO SOLIDWORKS VIEWER FOR LATEST ISSUE



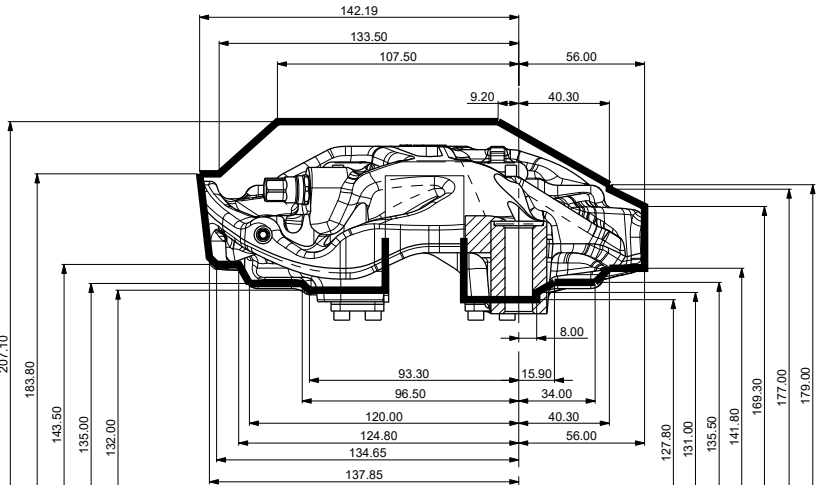
FIRST ANGLE PROJECTION

THIS DRAWING IS CONFIDENTIAL AND IS SUPPLIED ON THE EXPRESS CONDITION THAT IT SHALL NOT BE LOANED OR COPIED OR DISCLOSED TO ANY OTHER PERSON OR USED FOR ANY OTHER PURPOSE WITHOUT THE WRITTEN CONSENT OF AP RACING LTD.

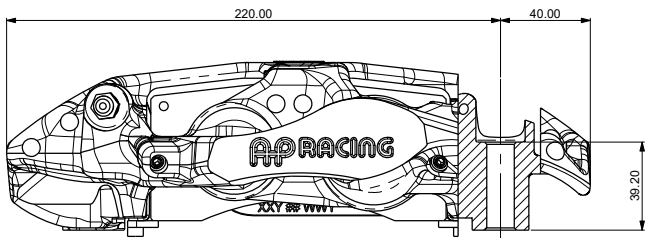


AP Racing
Wheler Road
Coventry
CV3 4LB
Tel: +44 024 7663 9595
Fax: +44 024 7663 9559
e-mail: sales@apracing.co.uk
Web site: HTTP://www.apracing.com

INSTALLATION DIMENSIONS



RADIAL PROFILE FOR Ø370 DISC

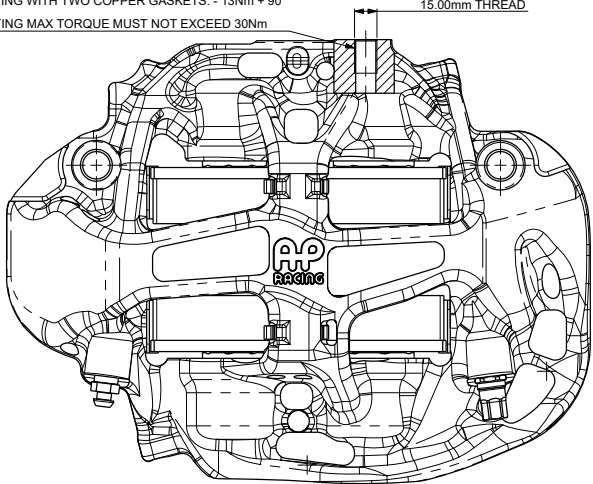


HYDRAULIC INLET
TYPICAL TIGHTENING TORQUE:

- FITTING WITH ONE COPPER GASKET: - 13Nm + 45°
- FITTING WITH TWO COPPER GASKETS: - 13Nm + 90°

RESULTING MAX TORQUE MUST NOT EXCEED 30Nm

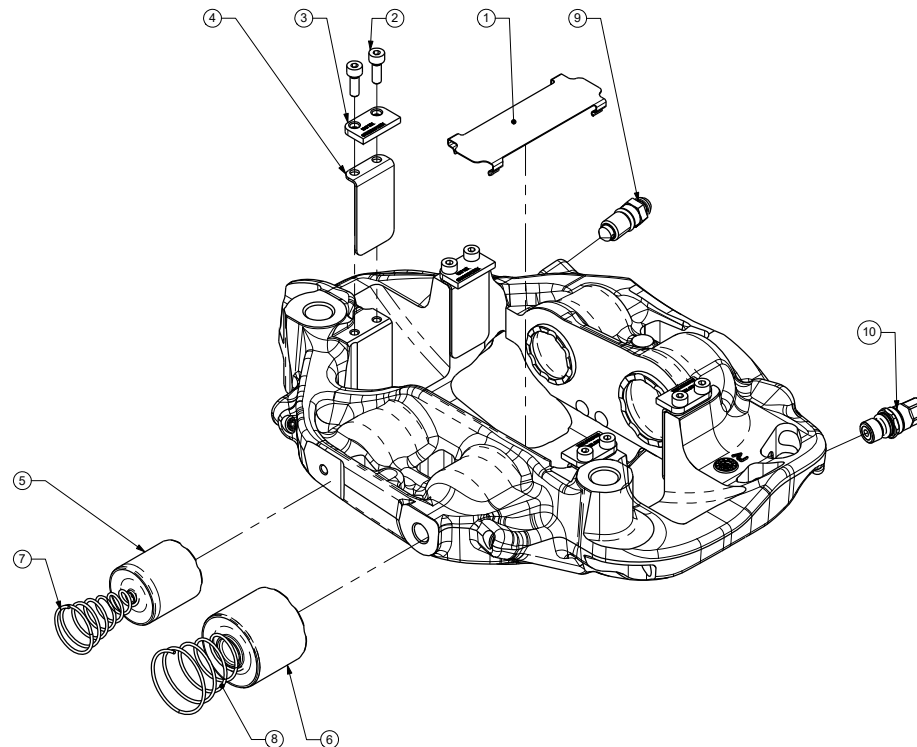
HYDRAULIC INLET
M10x1.0
15.00mm THREAD



SPARE PARTS AND KITS

CP7480-2 / 3S7L SPARES

REF	DESCRIPTION	PART NUMBER	QTY PER ASSEMBLY	FITTING INSTRUCTIONS
1	BRIDGE WEAR PLATE	CP7480-108	1	
2	M4x0.7 SOCKET HEAD CAP SCREW	CP3215-115	8	APPLY A 1-2mm DROP OF LOCTITE 270 TO THE 2ND FROM LAST THREAD WHEN FITTING. TIGHTENING TORQUE - 4Nm
3	PAD SUPPORT	CP6269-120	4	ENSURE THE FLAT SIDE OF THE PAD SUPPORT LINES UP WITH THE DISC PATHWAY AS SHOWN.
4	PAD ABUTMENT PLATE	CP6269-119	4	
5	Ø28.58 [1.125"] SST PISTON (D-BORE)	CP7480-109	2	
	Ø28.58 [1.125"] TIT PISTON (D-BORE)	CP7480-124		
6	Ø36.00 [1.417"] SST PISTON (H-BORE)	CP7480-110	2	
	Ø36.00 [1.417"] TIT PISTON (H-BORE)	CP7480-125		
7	7lb AKB SPRING (D-BORE)	CP4100-121	2	
8	7lb AKB SPRING (H-BORE)	CP2667-113	2	
9	BLEED SCREW KIT	CP3880-1	2	APPLY A SMALL AMOUNT OF LOCTITE 270 THE THE THREADS BEFORE FITTING. TIGHTENING TORQUE - 17Nm
OPTIONAL EXTRAS				
10	DRY BLEED VALVE	CP6300-21	2	APPLY A SMALL AMOUNT OF LOCTITE 270 TO THE VALVE THREADS BEFORE FITTING VALVE TIGHTENING TORQUE - 13Nm CAP TIGHTENING TORQUE - 4Nm
	SEAL KIT (4 SEALS)	CP4518-DH	1	



Issue No.	Alterations		
	Date & No.	Particulars	Zone / Initials
-	-	SEE SHEET 1 FOR ISSUE INFORMATION.	-

SCALE 1:2	SHEET 2 OF 2
DRAWN SHAWN YOUNG	
APPROVED	
DERIVED FROM	
TITLE 4 PISTON GT BRAKE CALIPER Ø370 x 32 DISC & D49 PAD	
DRG NO.	CP7480-1CD